

Surface Raceway / Aluminum SWA4500CPO

SnapWay™ Accessories
Manufactured by MonoSystems, Inc.

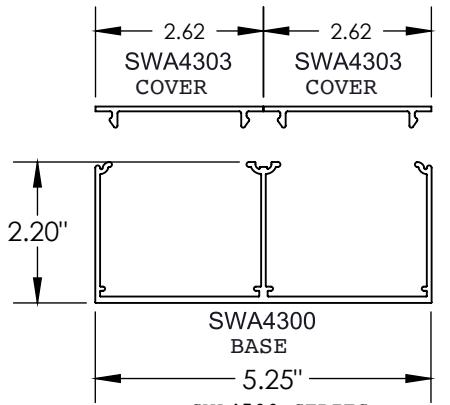
COVER PLATE OPTIONS

Notes

- 1.) Assembly instructions: firmly press cover into place ensuring that both sides are completely snapped into base section.
- 2.) All covers come 12" standard unless specified otherwise.
- 3.) UL listed when used with grounding adapter clips (SWA45GC) adjacent to wire entry points.
- 4.) Views for reference - do not scale.

Material

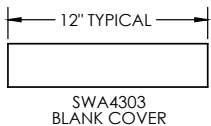
#6063-T6 Extruded Aluminum, Satin Anodized Finish.



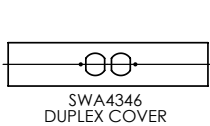
SWA4500 SERIES
2 COMPARTMENT
ALUMINUM RACEWAY
SECTION VIEW
SATIN ANODIZE FINISH
-USES SWA4300 SERIES COVER-
(EACH ORDERED SEPARATELY)



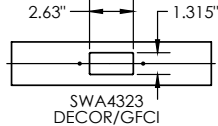
UL LISTED
FILE: E167318



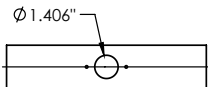
SWA4303
BLANK COVER



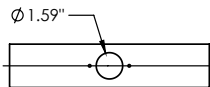
SWA4346
DUPLEX COVER



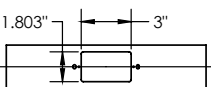
SWA4323
DECOR/GFCI



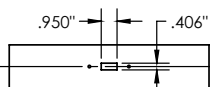
SWA4325
SINGLE ROUND



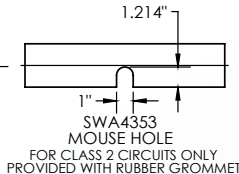
SWA4326
SINGLE ROUND



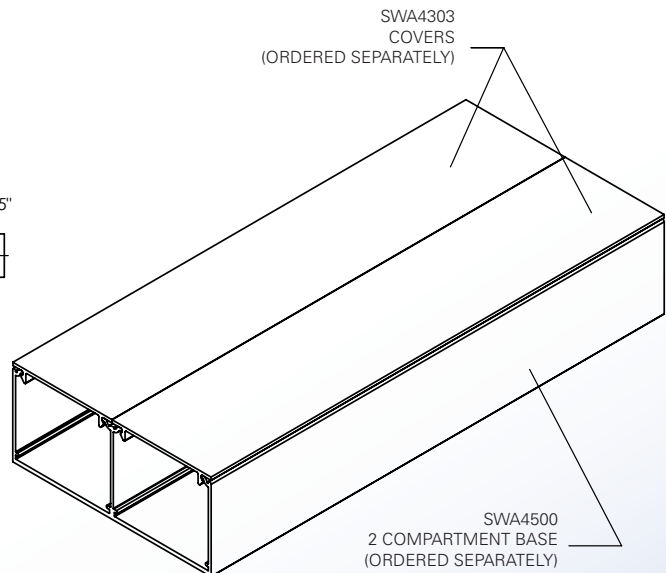
SWA4357
UNIVERSAL COVER



SWA4348
SWITCH COVER



SWA4353
MOUSE HOLE
FOR CLASS 2 CIRCUITS ONLY
PROVIDED WITH RUBBER GROMMET



4 International Drive
Rye Brook, NY 10573
Toll Free: 1 888.764.7681
Phone: 914.934.2075
Fax: 914.934.2190
MonoSystems.com

