

Surface Raceway / Aluminum SWA3362

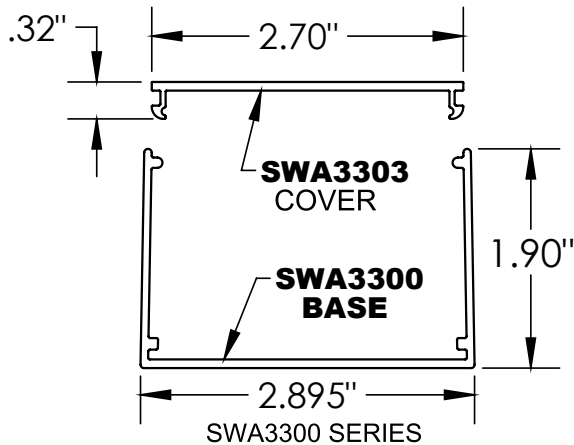
SnapWay™ Fittings

Manufactured by MonoSystems, Inc.

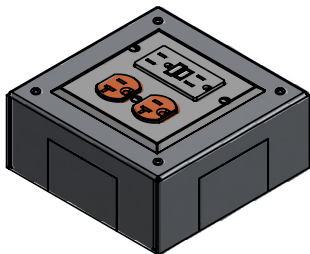
DEEP DEVICE BOX, 2-GANG

Assembly Instructions

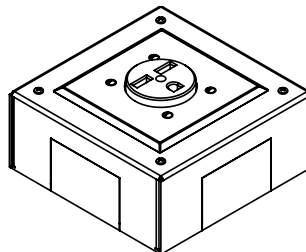
- 1.) Use for mounting 2 devices or 1 large device such as a 6-30R to SWA3300 series raceway while also allowing for connection of up to 4 base sections.
- 2.) Remove covers and align SWA3300 base sections to be connected. Remove appropriate knockouts in SWA3362 at connection positions and insert base in fitting such that fitting flange rests within lower channel of base. Tighten #8-32 pan head screw allowing tension to hold in place.
- 3.) Attach grounding wire to #10-32 ground screw in box.
- 4.) Re-install cover and firmly press raceway covers into place ensuring that both sides are completely snapped into base section.
- 5.) Views for reference - do not scale.



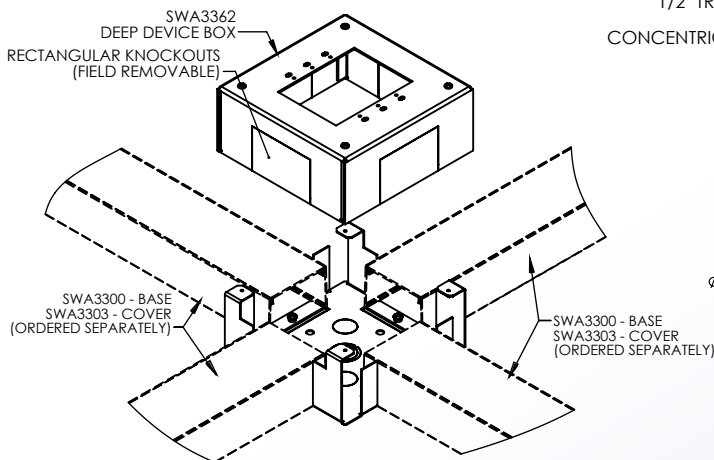
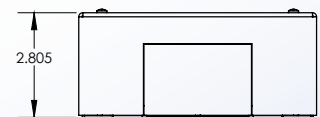
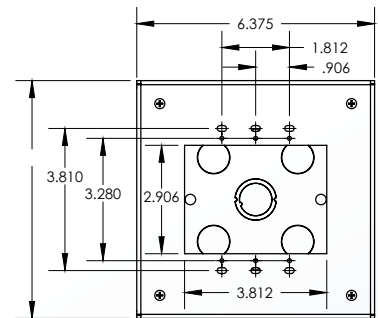
ALUMINUM RACEWAY SECTION VIEW
STANDARD SATIN ANODIZE FINISH
(ALL ORDERED SEPARATELY)



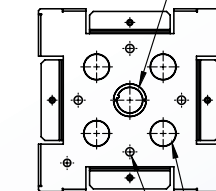
SHOWN WITH DUPLEX, GFCI
AND SMS4289AM COVER
ALL (ORDERED SEPARATELY)



SHOWN WITH NEMA 6-30R
AND SMS4289P COVER BOTH
(ORDERED SEPARATELY)



1/2" TRADE [Ø.875] X
3/4" [Ø1.109]
CONCENTRIC KNOCKOUTS



4X 1/2" TRADE [Ø.875]
KNOCKOUTS

4 International Drive
Rye Brook, NY 10573
Toll Free: 1 888.764.7681
Phone: 914.934.2075
Fax: 914.934.2190
MonoSystems.com

