

# Surface Raceway / Aluminum SWA43A4

## Snap Way™ Fittings

Manufactured by MonoSystems, Inc.

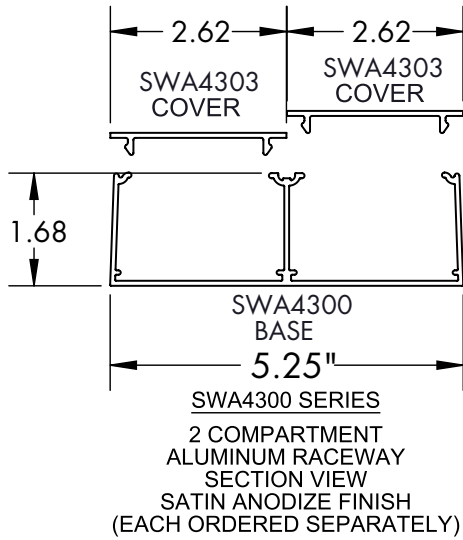
### RACEWAY DEVICE BOX

#### General Information

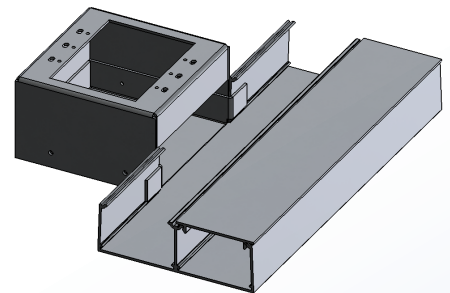
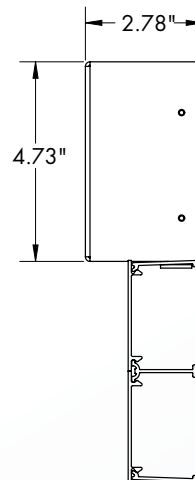
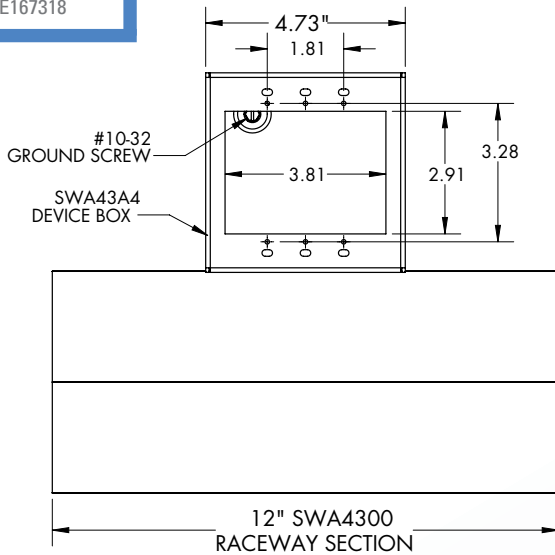
- 1.) Used to mount a single larger power device such as a 6-30R or 14-30R.
- 2.) Supplied as 12" SWA4300 Raceway section with premounted device box as shown.
- 3.) Mount device (by others) to SWA43A4 Raceway device box, wire per NEC & local codes.
- 4.) Finish with device plate (ordered separately).
- 5.) Views for reference - do not scale.

#### Material

Aluminum. Satin anodized finish.



UL LISTED  
FILE: E167318



4 International Drive  
Rye Brook, NY 10573  
Toll Free: 1 888.764.7681  
Phone: 914.934.2075  
Fax: 914.934.2190  
MonoSystems.com

