

# Surface Raceway / Aluminum SWA3317

## Snap Way™ Fittings

Manufactured by MonoSystems, Inc.

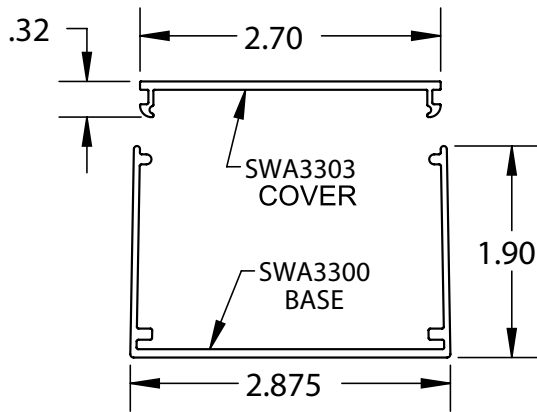
### INVERTED ELBOW

#### Notes:

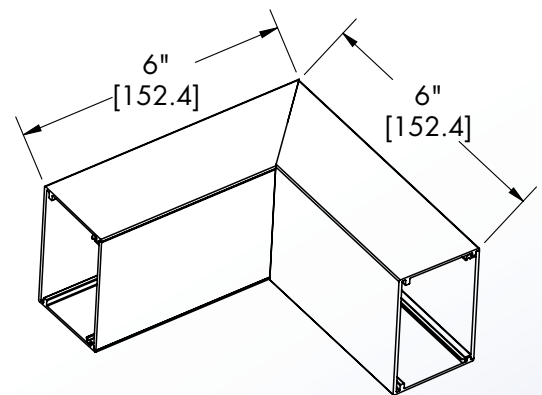
- 1.) Remove cover and connect SWA3317 to SWA3300 base sections using SWA3302 couplings (couplings ordered separately), 2 required.
- 2.) Secure elbow to base sections by tightening #8-32x3/16" screws.
- 3.) Firmly press cover into place ensuring that both sides are completely snapped into base section.
- 4.) Views for reference - do not scale.

#### Material

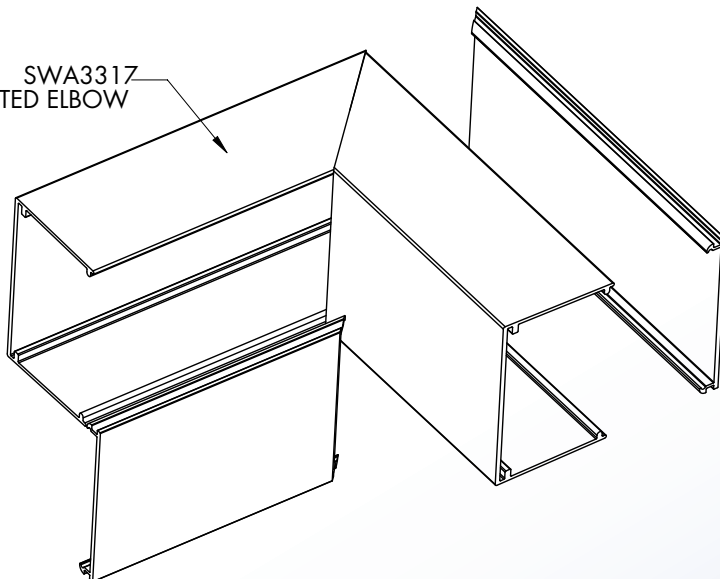
#6063-T6 extruded aluminum, satin anodized finish. Nominal wall thickness: 0.060".



UL LISTED  
FILE: E167318



SWA3317  
INVERTED ELBOW



4 International Drive  
Rye Brook, NY 10573  
Toll Free: 1 888.764.7681  
Phone: 914.934.2075  
Fax: 914.934.2190  
MonoSystems.com

