

# Cable Tray / Ladder Tray

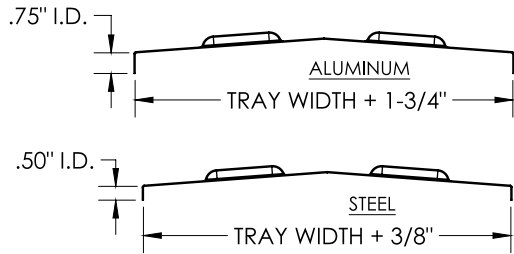
## X0-2073-HEXX-XXXX-V

### PowerTray™ Fittings

Manufactured in the USA by MonoSystems, Inc.

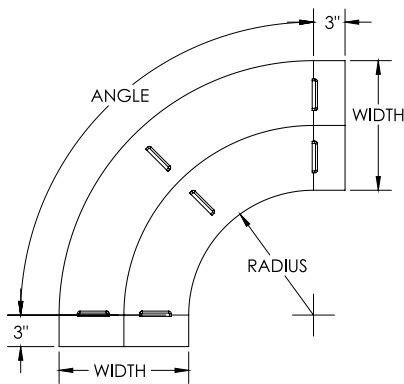


## PEAKED VENTED FITTING COVER FOR HORIZONTAL ELBOWS



### Notes

- 1.) Actual vent pattern will vary according to size and angle.
- 2.) Views for reference - do not scale.



### ORDERING DATA EXAMPLE:

**X0-2073-HEXX-XXXX-V**

#### MATERIAL

A = ALUMINUM  
P = PRE-GALV STEEL  
G = HOT DIPPED GALV.

#### COVER TYPE

073 = PEAKED COVER

HE = HORIZONTAL ELBOW

#### ANGLE

30 = 30°  
45 = 45°  
60 = 60°  
90 = 90°

#### RADIUS

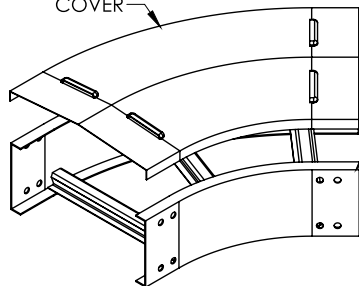
12 = 12"  
18 = 18"  
24 = 24"  
36 = 36"

#### FITTING WIDTH

06 = 6" WIDE  
09 = 9" WIDE  
12 = 12" WIDE  
18 = 18" WIDE  
24 = 24" WIDE  
30 = 30" WIDE  
36 = 36" WIDE

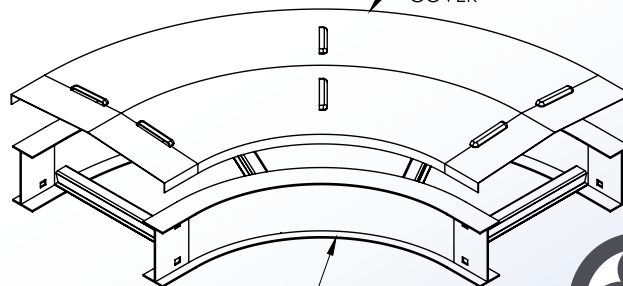
VENTED

PEAKED VENTED COVER



45° STEEL HORIZONTAL ELBOW (ORDERED SEPARATELY)

PEAKED VENTED COVER



90° ALUMINUM HORIZONTAL ELBOW (ORDERED SEPARATELY)



4 International Drive  
Rye Brook, NY 10573  
Toll Free: 1 888.764.7681  
Phone: 914.934.2075  
Fax: 914.934.2190  
MonoSystems.com

**MonoSystems™**  
wire management. managed.