

# Cable Tray / Channel Tray

## SXX-XX-30IVXX

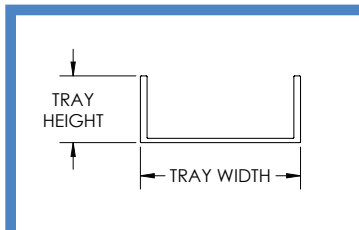
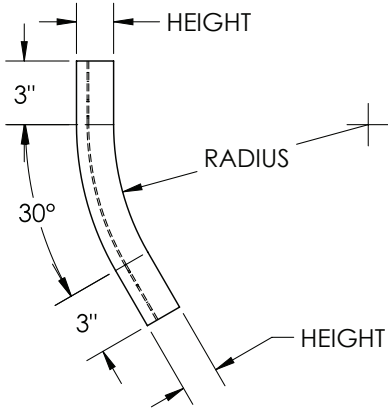
Channel Tray Fittings  
 Manufactured in the USA by MonoSystems, Inc.



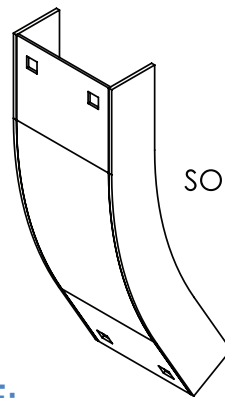
### 30° Inside Vertical Bend

#### General Information

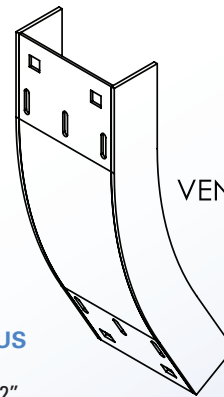
- 1.) Attach bend to channel tray using (1) supplied splice plate (SBX-104X) and provided 3/8" hardware.
- 2.) Recommended torque: for 3/8" fasteners 25-35 ft-lbs [33.9-47.5 N-m].
- 3.) Views for reference - do not scale.



TRAY HEIGHT		TRAY WIDTH	
H		W	
IN.	MM.	IN.	MM.
1.25	32	3	76
1.75	44	4	101
1.75	44	6	152



SOLID BOTTOM



VENTED BOTTOM

#### ORDERING DATA EXAMPLE:

# SXX - XX - 30 - IV XX

STYLE                      MATERIAL                      WIDTH                      FITTING ANGLE                      FITTING TYPE                      RADIUS

B = SOLID  
 BOTTOM  
 V = VENTED  
 BOTTOM

A = ALUMINUM  
 P = PREGLAV STEEL  
 G = HDGAF STEEL  
 SS4 = STAINLESS STEEL 304  
 SS6 = STAINLESS STEEL 316

03 = 3"  
 04 = 4"  
 06 = 6"

30°

IV = INSIDE  
 VERTICAL  
 BEND

12 = 12"  
 24 = 24"  
 36 = 36"  
 48 = 48"

4 International Drive  
 Rye Brook, NY 10573  
 Toll Free: 1 888.764.7681  
 Phone: 914.934.2075  
 Fax: 914.934.2190  
 MonoSystems.com

