

Cable Tray / RaceTray / Center Hung RTC-SUP-XX-PX

RaceTray™ Accessories

SUPPORT BAR

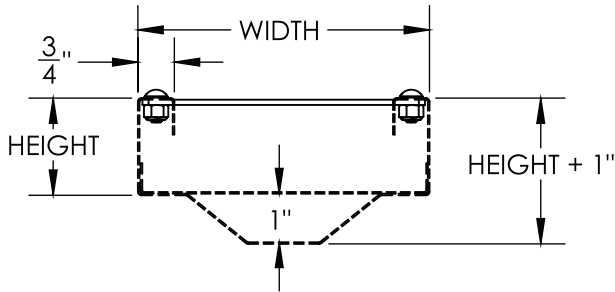
Notes

Straight lengths - For steel center hung RaceTray

- 1.) Included pre-mounted with each fitting or tray length ordered.
- 2.) Attach support bar to center hung race tray using 1/4" clearance holes and supplied hardware as shown.
- 3.) Attach threaded rod (by others) or box beam (by others) using 1/2" center clearance hole.
- 4.) Views for reference - do not scale.

Horizontal elbows - For steel center hung RaceTray

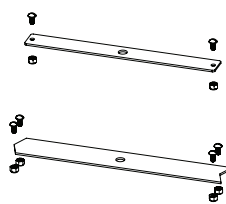
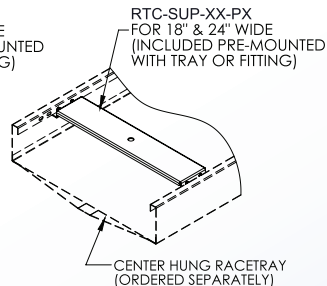
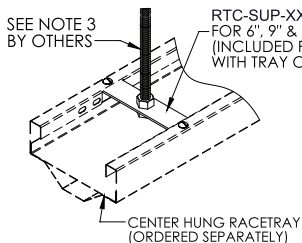
- 1.) Included pre-mounted with each fitting ordered.
- 2.) Attach support bar to center hung race tray using 1/4" clearance holes and supplied hardware as shown.
- 3.) Attach threaded rod (by others) or box beam (by others) using 1/2" center clearance hole.
- 4.) Views for reference - do not scale.



ORDERING DATA EXAMPLE:

RTC-SUP-XX-PX

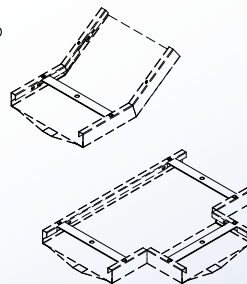
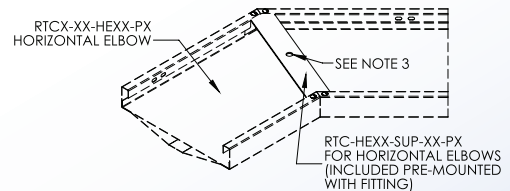
WIDTH	COLOR
6 = 6" WIDE	W = WHITE
9 = 9" WIDE	B = BLACK
12 = 12" WIDE	FW = FAUX WOOD
18 = 18" WIDE	FS = FAUX STONE
24 = 24" WIDE	



ORDERING DATA EXAMPLE:

RTC-HEXX-SUP-XX-PX

ANGLE	WIDTH	COLOR
30	6 = 6" WIDE	W = WHITE
45	9 = 9" WIDE	B = BLACK
60	12 = 12" WIDE	
90	18 = 18" WIDE	
	24 = 24" WIDE	



Niedax MonoSystems, Inc.
180 Hopkins Street
Buffalo, NY 14220
1 888.764.7681
Phone: 914.934.2075
Fax: 914.934.2190
MonoSystems.com

