

# Cable Tray / Wire Mesh Basket MM-X-TRP-X-X

## MonoMesh™

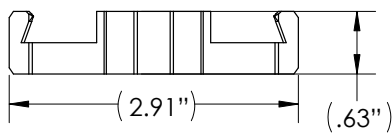
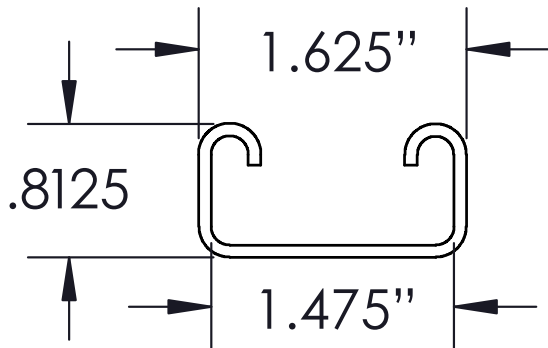
Manufactured in the USA by MonoSystems, Inc.



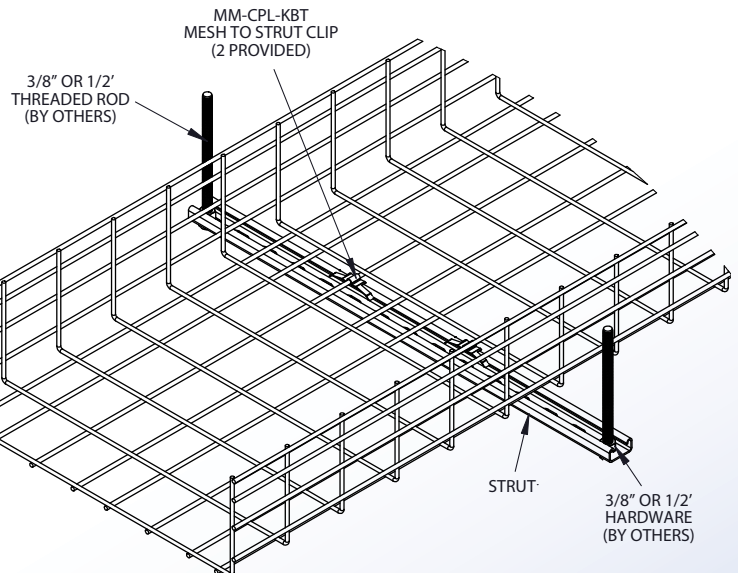
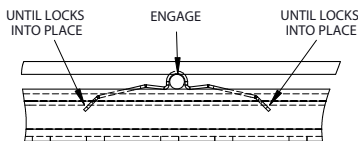
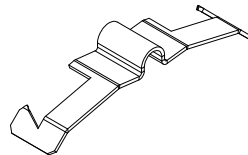
## MonoMesh Strut Trapeze

### General Information

- 1.) Attach clip to mesh longitudinal wire and press down until clip flanges locks into place on strut.
- 2.) Hardware and threaded rod (by others)
- 3.) Views for reference - do not scale.



UL Classified  
as grounding  
conductor



### ORDERING DATA EXAMPLE:

## MM-X-TRP-X-X

<p><b>SERIES</b> MM = MONO-MESH</p>	<p><b>MATERIAL</b> G = HDGAF STEEL P = PRE GALV.</p>	<p><b>SIZE</b> 3 = 8" 6 = 10" 8 = 12" 10 = 14" 12 = 16" 20 = 24" 24 = 28"</p>	<p><b>PAINT OPTION</b> BLANK = NO PAINT G = GREY B = BLACK W = WHITE Y = YELLOW * = CUSTOM</p>
		<p>TRAY WIDTH</p>	<p>PART LENGTH</p>

4 International Drive  
Rye Brook, NY 10573  
Toll Free: 1 888.764.7681  
Phone: 914.934.2075  
Fax: 914.934.2190  
MonoSystems.com



**MonoSystems™**  
wire management. managed.