

Cable Tray / Channel Tray

SBX-XX-HTXX

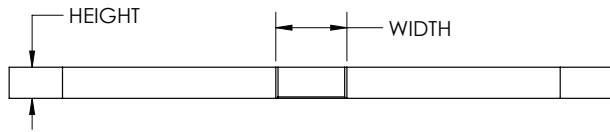
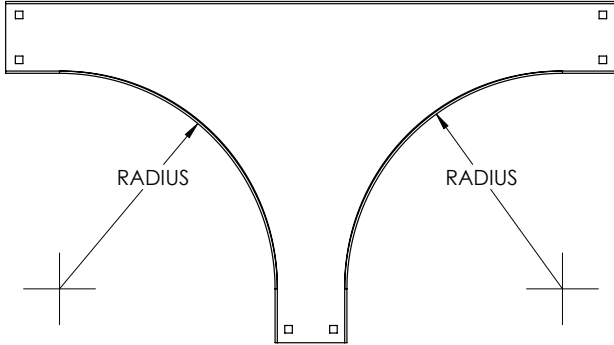
Channel Tray Fittings
 Manufactured in the USA by MonoSystems, Inc.



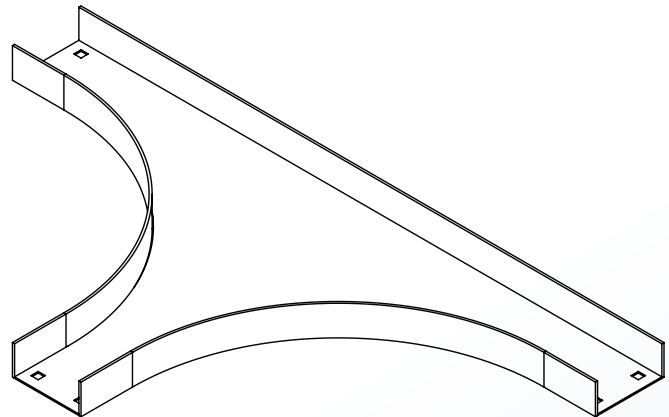
Horizontal Tee Fitting - Solid Bottom

General Information

- 1.) Attach fitting to channel tray using splice plates (sbx-104x) and 3/8" mounting hardware. (2) Splice plates included.
- 2.) Recommended torque: for 3/8" fasteners 25-35 ft-lbs [33.9-47.5 N-m].
- 3.) Views for reference - do not scale.



TRAY HEIGHT		TRAY WIDTH	
H		W	
IN.	MM.	IN.	MM.
1.25	32	3	76
1.75	44	4	101
1.75	44	6	152



ORDERING DATA EXAMPLE:

SB X - XX - HT XX

STYLE

MATERIAL

WIDTH

FITTING TYPE

RADIUS

VENTED
BOTTOM

A = ALUMINUM
 P = PREGLAV STEEL
 G = HDGAF STEEL
 SS4 = STAINLESS STEEL 304
 SS6 = STAINLESS STEEL 316

03 = 3"
 04 = 4"
 06 = 6"

HT = HORIZONTAL
 TEE

12
 24
 36
 48

4 International Drive
 Rye Brook, NY 10573
 Toll Free: 1 888.764.7681
 Phone: 914.934.2075
 Fax: 914.934.2190
 MonoSystems.com

