

# Cable Tray / Channel Tray

## SBX-XX-HCXX

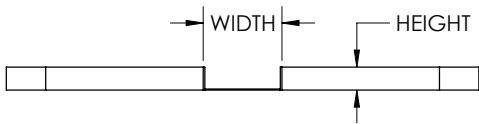
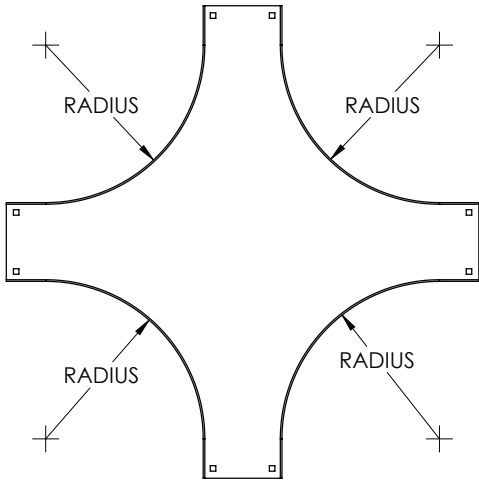
Channel Tray Fittings  
 Manufactured in the USA by MonoSystems, Inc.



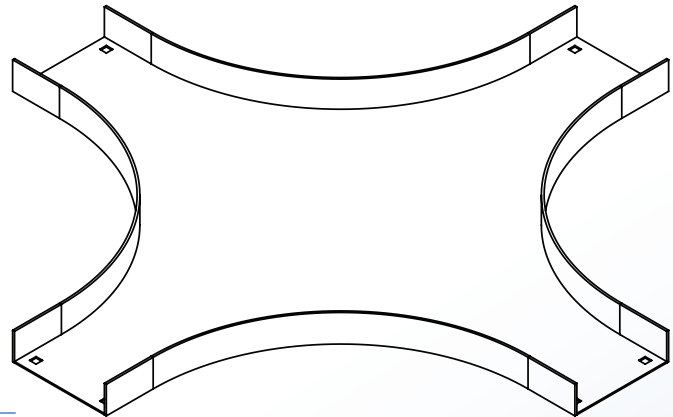
### Horizontal Cross Fitting - Solid Bottom

#### General Information

- 1.) Attach fitting to channel tray using splice plates (sbx-104x) and 3/8" mounting hardware. (3) Splice plates included.
- 2.) Recommended torque: for 3/8" fasteners 25-35 ft\_lbs [33.9-47.5 N-m].
- 3.) Views for reference - do not scale.



TRAY HEIGHT		TRAY WIDTH	
H		W	
IN.	MM.	IN.	MM.
1.25	32	3	76
1.75	44	4	101
1.75	44	6	152



#### ORDERING DATA EXAMPLE:

# SB X - XX - HC XX

STYLE      MATERIAL      WIDTH      FITTING TYPE      RADIUS

SOLID  
BOTTOM

A = ALUMINUM  
 P = PREGLAV STEEL  
 G = HDGAF STEEL  
 SS4 = STAINLESS STEEL 304  
 SS6 = STAINLESS STEEL 316

03 = 3"  
 04 = 4"  
 06 = 6"

HC = HORIZONTAL  
 CROSS

12  
 24  
 36  
 48

4 International Drive  
 Rye Brook, NY 10573  
 Toll Free: 1 888.764.7681  
 Phone: 914.934.2075  
 Fax: 914.934.2190  
 MonoSystems.com

