

# Innovations / MonoMesh INSTALLATION

## MonoMesh™ Install

Manufactured in the USA by MonoSystems, Inc.



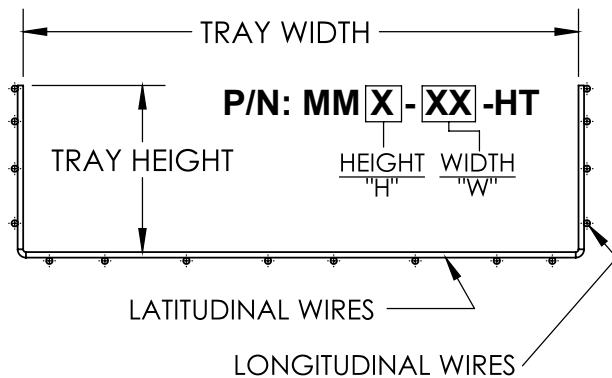
### INSTALLATION INSTRUCTIONS:

#### OPTION 1

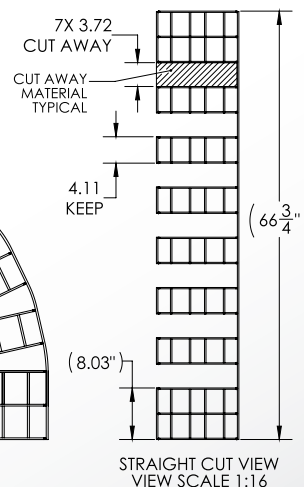
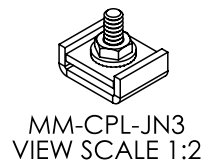
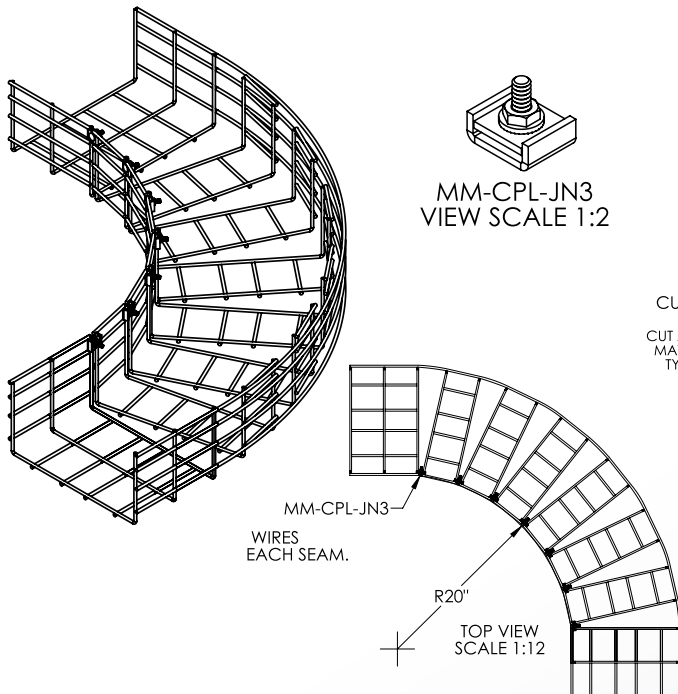
- 1.) Measure desired location of elbow.
- 2.) Cut away MonoMesh at the seam starting 3 wires in from the end. Cut away 3.72" longitudinal sections (every other section) as shown in "straight cut view" keeping the latitudinal wires in tack.
- 3.) Once 7 sections have been removed, bend mesh such that the vertical wires at the removed areas are adjacent. Attach at least (1) MM-CPL-JN3 at each seam. Depending on height of mesh, use an additional MM-CPL-JN3 below each side wall channel if desired.

#### OPTION 2

- 1.) Measure desired location of elbow.
- 2.) Cut away MonoMesh at corners of mesh to be adjoined. This should produce 2 different profiles (see diagrams). For piece 1, remove the right side longitudinal wires to a length of 9/32" smaller than the width of the tray. Make the cut as close to a vertical running wire seam as possible. Install MM-ACC-KNB's over the ends of any protruding cut wires. For piece 2, remove the left side longitudinal wires to a length of 9/32" smaller than the width of the tray. Be sure to keep the lowermost longitudinal wire as this portion will be used to cap off the end of piece 1. Make the cut as close to a vertical running wire seam as possible. Install MM-ACC-KNB's over the ends of any protruding cut wires.
- 3.) Place appropriate size MM-JNR-X-XX inside mesh at 90° corner.
- 4.) Install 1/4" carriage bolt inside of slot of radius brackets as shown and capture with MM-CPL-JN2 and 1/4" serrated nut on other side of mesh wire.
- 5.) Radius of bracket is 1/2". Each radius bracket includes MM-CPL-JN2 clips and mounting hardware.
- 6.) Install MM-CPL-JN3 clips to join vertical wires on outside corner and along the floor seam.



### SUGGESTED HORIZONTAL 90° ELBOW OPTION 1



MONO MESH WIDTH	QTY OF MM-CPL-JN3	RESULTING RADIUS
3"   6"   8"	7 OR 14	20"
10"   12"	7 OR 14	20"
16"   18"	7 OR 14	20"
20"   24"	7 OR 14	20"

4 International Drive  
Rye Brook, NY 10573  
Toll Free: 1 888.764.7681  
Phone: 914.934.2075  
Fax: 914.934.2190  
MonoSystems.com

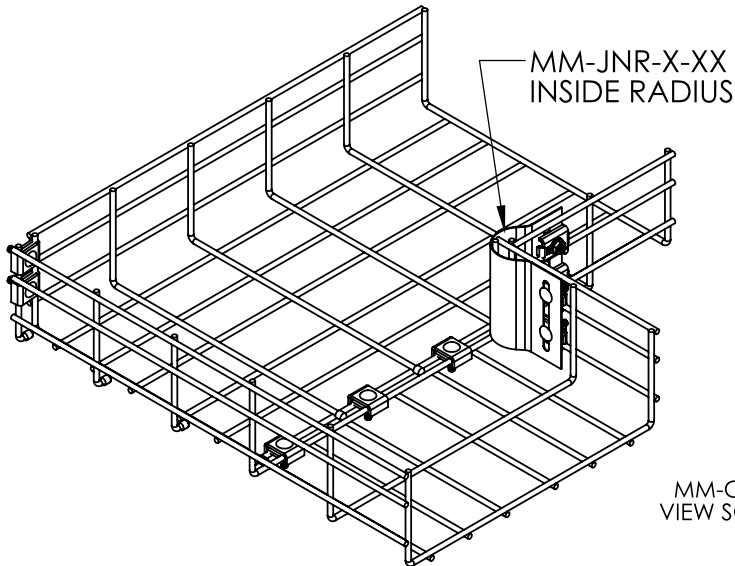


**MonoSystems™**  
wire management. managed.™

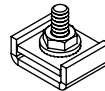
# Innovations / MonoMesh INSTALLATION

## MonoMesh™ Install

Manufactured in the USA by MonoSystems, Inc.



### SUGGESTED HORIZONTAL 90° ELBOW OPTION 2



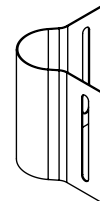
MM-CPL-JN3  
VIEW SCALE 1:2



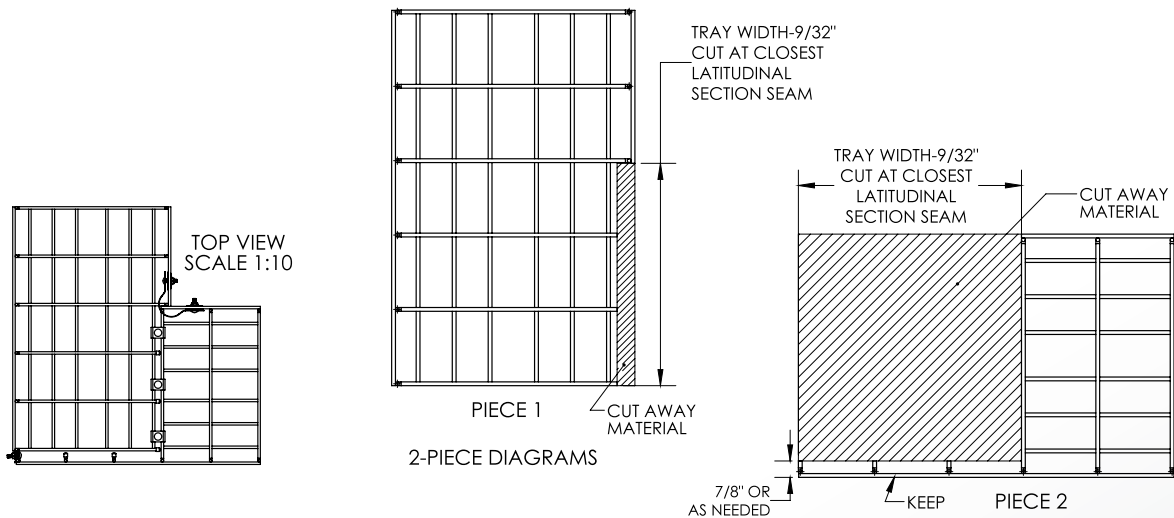
MM-ACC-KNB  
VIEW SCALE 1:2



MM-CPL-JN2  
VIEW SCALE 1:2



MM-JNR-X  
VIEW SCALE 1:4



MONO MESH WIDTH	QTY OF MM-JNR-X-XX	QTY OF MM-CPL-JN3	OPTIONAL QTY OF MM-ACC-KNB
3"   6"   8"	1	2-3	3-4
10"   12"	1	4-5	5-6
16"   18"	1	6	6
20"   24"	1	7	6-7

4 International Drive  
Rye Brook, NY 10573  
Toll Free: 1 888.764.7681  
Phone: 914.934.2075  
Fax: 914.934.2190  
MonoSystems.com



**MonoSystems™**  
wire management. managed.