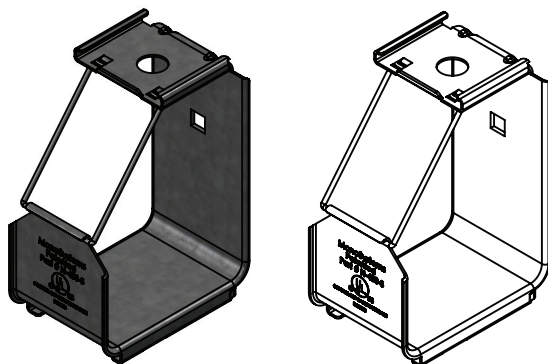
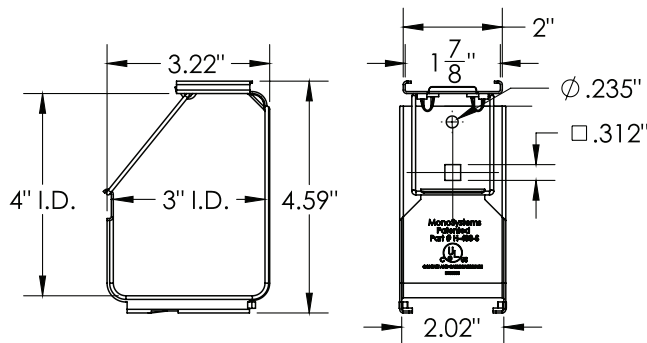


# J-Hook / Steel INSTALLATION

The Hook™ Install  
Manufactured by MonoSystems, Inc.

## INSTALLATION INSTRUCTIONS:



THE HOOK PART NUMBER	STYLE	MATERIAL
H-233-S	3"W X 2"H	GALVANIZED STEEL
H-433-S	3"W X 4"H	GALVANIZED STEEL
H-433-SS	3"W X 4"H	STAINLESS STEEL

### Beam Clamp Mounted:

- 1.) Mount H-433-BC beam clamp to the hook by installing a 1/4-20x1/2" bolt thru the lower hole on the back face of the hook and thread into the 1/4-20 thread in the back of the beam clamp. If desired, the upper #10-32 clearance hole in the hook can be reamed out to accept a 1/4-20 bolt.
- 2.) To mount the hook to an I-beam or support H-433-BC using beam clamp, align the hook and beam clamp assembly and slide the beam clamp completely onto the I-beam. Fasten the provided 5/16-18 square head bolt to hold in place. The installer should evaluate each installation based on the load requirements and existing support structure.
- 3.) Once affixed, open the cage wire and hang the desired items in place, then lock the cage wire closed.
- 4.) Views for reference - do not scale.

### Wall Mounted:

- 1.) Determine how many hooks are desired.
- 2.) Mount hook to the wall using #10 hardware (upper rear hole) and 1/4-20 hardware (square hole). All mounting hardware by others. 2-pieces of hardware are recommended.
- 3.) The installer should evaluate each installation based on the load requirements and existing support structure.
- 4.) Once affixed, open the cage wire and hang the desired items in place, then lock the cage wire closed.
- 5.) The hook is designed to infinitely link together without the need for hardware for link connection.
- 6.) Views for reference - do not scale.

### MonoMesh Mounted:

- 1.) To mount hook to MonoMesh, use (1) MM-CPL-JN3 joining clamp. Install 1/4-20 carriage bolt thru square hole in back of hook, thru the square plate and thru the joining "C" clip, which should be aligned to clamp around the mesh wire. Tighten the 1/4-20 nut until assembly is secure.
- 2.) Once affixed, open the cage wire and hang the desired items in place, then lock the cage wire closed.
- 3.) Views for reference - do not scale.

### Hung Mounted:

- 1.) Secure 1/2" threaded rod to above strut, beam, or other suitable mounting surface.
- 2.) Attach threaded rod to Ø 1/2" top hole in H-433-H or H-433-HSS (stainless) hanging bracket or directly to Ø 1/2" top hole in H-433-S or H-433-SS (stainless) hook using 1/2" hex nuts and washers (by others).
- 3.) If mounting hooks using a hanging bracket, attach by sliding the top channel of the hook around the end of the hanging bracket. Slide hook on from back-side as shown. Feed 1/4-20 x 1/2" carriage bolt thru square holes and tighten 1/4-20 nut from other side (securement hardware ordered separately).
- 4.) Once hung, likability remains fully viable in single or back to back configurations. To attach additional hooks, simply slide the top of the hook to be adjoined into the bottom channel of an existing hook. Slide from the front to the back until the parts lock together as shown below.
- 5.) Once affixed, open the cage wire and hang the desired items in place, then lock the cage wire closed.
- 6.) Views for reference - do not scale.

4 International Drive  
Rye Brook, NY 10573  
Toll Free: 1 888.764.7681  
Phone: 914.934.2075  
Fax: 914.934.2190  
MonoSystems.com

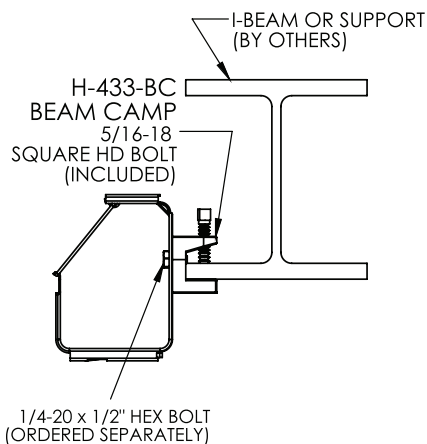


# J-Hook / Steel INSTALLATION

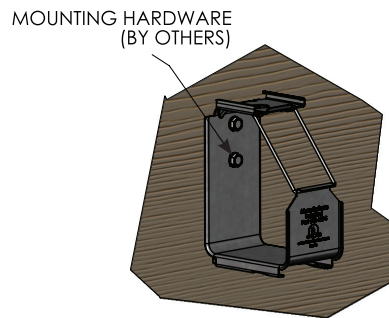
## The Hook™ Install

Manufactured by MonoSystems, Inc.

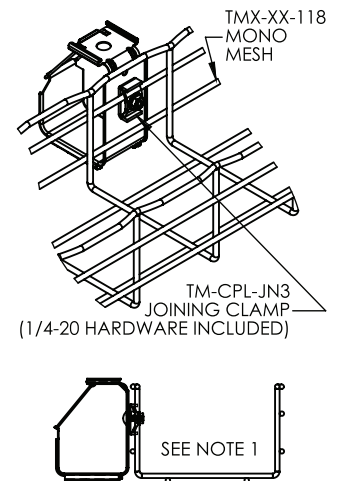
### BEAM CLAMP MOUNTED CONFIGURATION



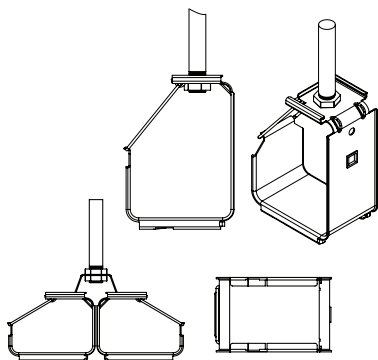
### WALL MOUNTED CONFIGURATION



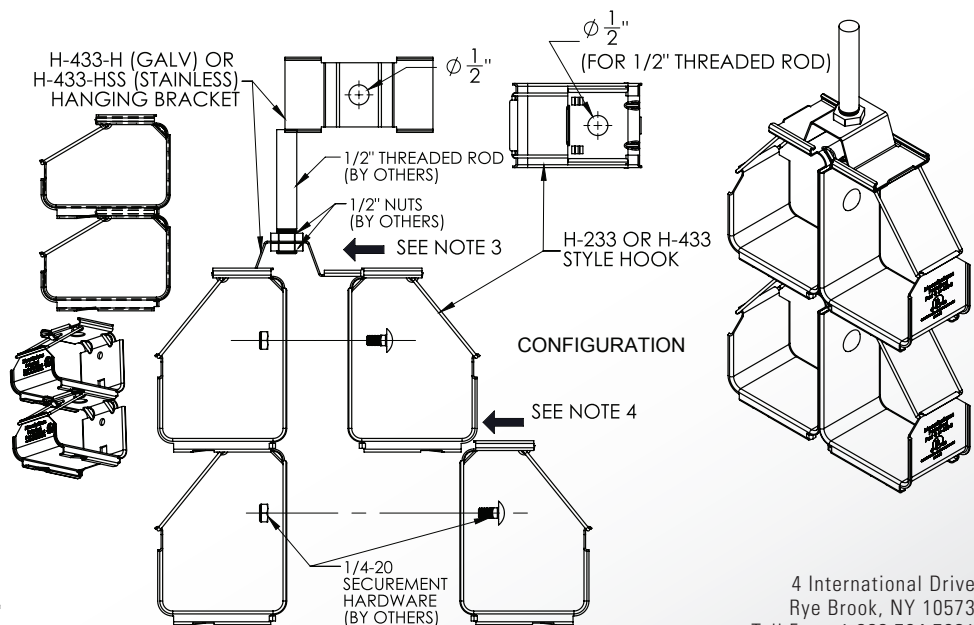
### MONO-MESH MOUNTED CONFIGURATION



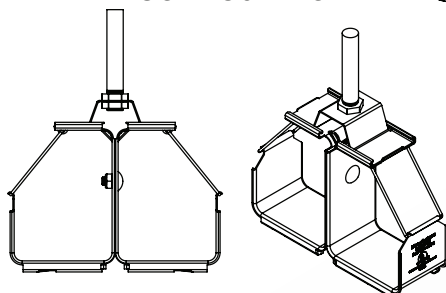
### SINGLE HUNG CONFIGURATION



### BACK TO BACK LINKED CONFIGURATION



### BACK TO BACK HUNG CONFIGURATION



4 International Drive  
Rye Brook, NY 10573  
Toll Free: 1 888.764.7681  
Phone: 914.934.2075  
Fax: 914.934.2190  
MonoSystems.com

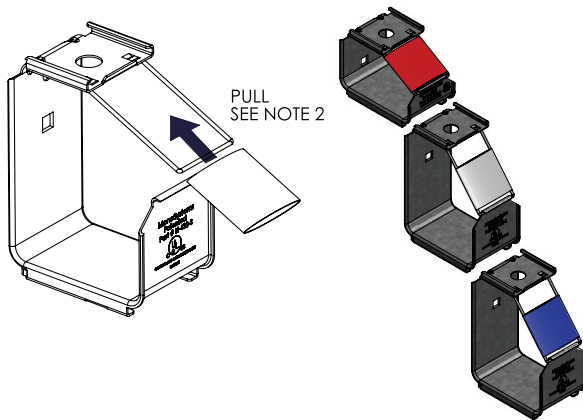


# J-Hook / Steel INSTALLATION

The Hook™ Install  
Manufactured by MonoSystems, Inc.

## INSTALLATION INSTRUCTIONS:

### COLOR BAND INSTALL



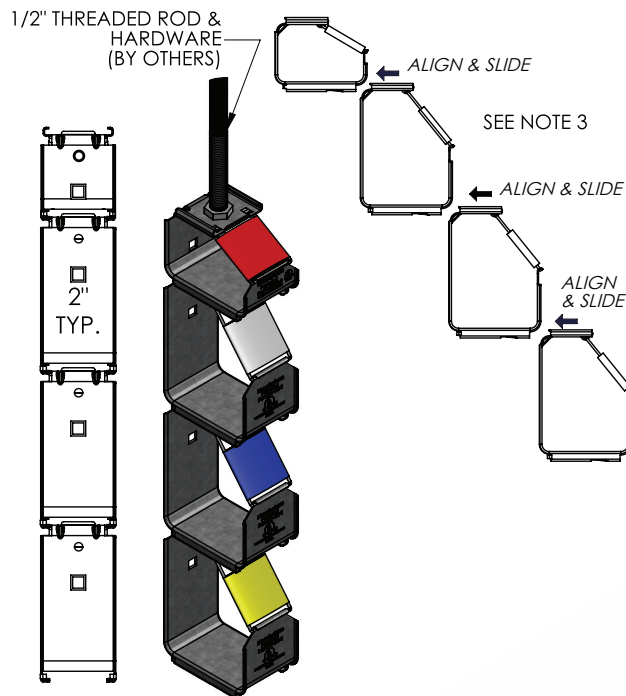
#### Color Band Installation:

- 1.) Color coated sleeves allow for content designation without the need for inventory colored hardware in various colors. For use with H-233 or H-433 style hooks.
- 2.) To install, un-hook cage wire and align poly color band around wire. With index finger and thumb pull color band upward until it is completely centered on wire. Re-hook cage wire.

#### Aligned Multi-Hung Top Mounted:

- 1.) Secure 1/2" threaded rod to above strut, beam, or other suitable mounting surface.
- 2.) Attach threaded rod to Ø 1/2" top hole in upper hook using 1/2" hex nut and washer (by others).
- 3.) Once hung, linkability remains fully viable. To attach the additional hooks as shown, simply slide the top of the hook to be adjoined into the bottom channel of an existing hook. Slide from the front to the back until the parts lock together as shown above.
- 4.) Once affixed, open the cage wire, attach the appropriate color band and hang the desired items in place, then lock the cage wire closed.

### ALIGNED MULTI-HUNG TOP MOUNTED



ALL ORDERED  
SEPARATELY

THE HOOK PART NUMBER	STYLE	MATERIAL
H-233-S	3"W X 2"H	GALVANIZED STEEL
H-433-S	3"W X 4"H	GALVANIZED STEEL
H-433-SS	3"W X 4"H	STAINLESS STEEL

4 International Drive  
Rye Brook, NY 10573  
Toll Free: 1 888.764.7681  
Phone: 914.934.2075  
Fax: 914.934.2190  
MonoSystems.com

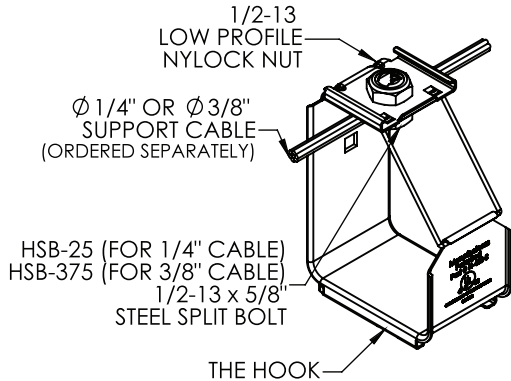


# J-Hook / Steel INSTALLATION

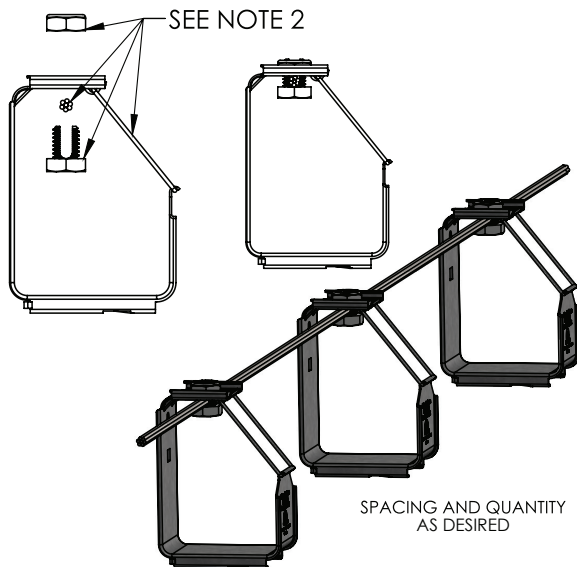
## The Hook™ Install

Manufactured by MonoSystems, Inc.

### INSTALLATION INSTRUCTIONS:



OVERHEAD PASS-THRU  
CABLE SUPPORT



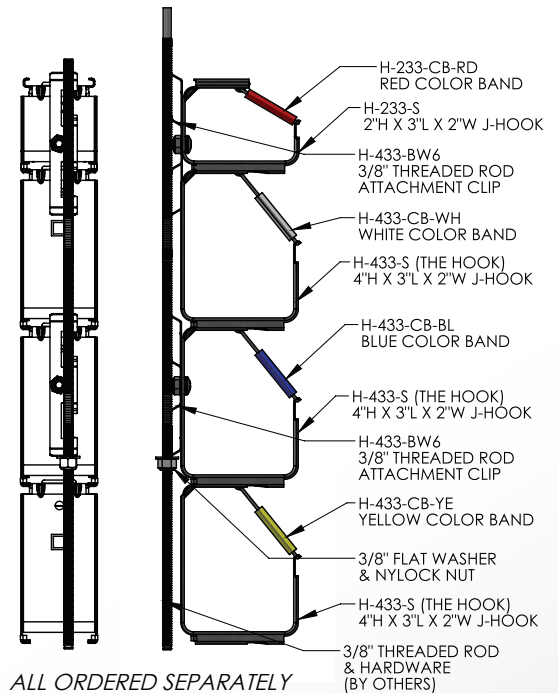
ALIGNED MULTI-HUNG  
ROD-CLAMP MOUNTED

#### Overhead Pass-Thru Cable Support:

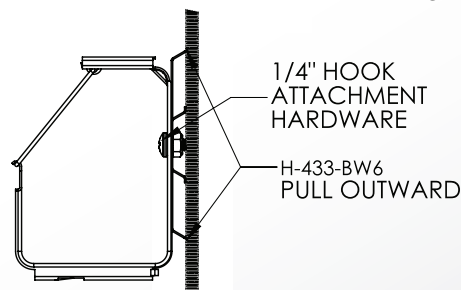
- 1.) Provides support for mounting of H-433-S or H-233-S 'Hook' by clamping to Ø 1/4" or Ø 3/8" support cable.
- 2.) To install: swing hook latch open and position support cable (ordered separately) centered about top hole. Feed HSB-25 or HSB-375 split bolt up thru hole while capturing support cable and fasten threads on the other end using provided 1/2-13 low profile nylock nut.

#### Aligned Multi-Hung Rod-Clamp Mounted:

- 1.) H-433-BW6 clips provide quick and easy attachment for mounting of H-233-S or H-433-S 'Hook' by clamping to a threaded rod from behind.
- 2.) To install, pull outer tabs outward and position Hook and attachment clip assembly such that the teeth within the attachment clip capture within the threads of the rod (by others).



ALL ORDERED SEPARATELY



4 International Drive  
Rye Brook, NY 10573  
Toll Free: 1 888.764.7681  
Phone: 914.934.2075  
Fax: 914.934.2190  
MonoSystems.com

