

Cable Tray / Center Spine MT-BLC-ALUM

MonoTray™

Manufactured in the USA by MonoSystems, Inc.

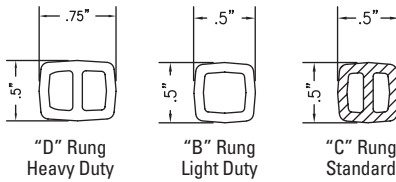


MONO-TRAY ALUMINIUM ORDERING GUIDE

Notes

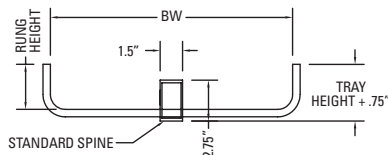
- 1.) Not all accessories are compatible with 4" High Spine.
Consult factory for detail.

RUNG SECTIONS

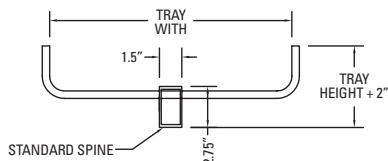


BOTTOM RUNG WIDTH CHART (ALUMINUM TRAY)

TRAY WIDTH	BW	
	in	mm
6	7.5	191
9	10.5	267
12	13.5	343
18	18	450
24	24	600



SECTION VIEW - BOTTOM RUNG



SECTION VIEW - TOP RUNG

MONO-TRAY ALUMINIUM SPINE DEFLECTION & LOAD CLASS

Spine Type	Support Span		Deflection		Nema Rating (1.5 safety Factor)
	ft	m	in	mm	
Standard	12	3.6	2.8	71	12C (100#/ft/12'-0")
Light (L Series)	12	3.6	3.4	86	12B (75#/ft/12'-0")



FILE: E80034
VOL.3



CERTIFIED

ORDERING DATA EXAMPLE:

Bottom Rung Mono-Tray Aluminum. 6" Rung Spacing, 3" High, 12" - 0" Length, 6" Wide

B 1 1 1 3 - 0 32 1 - X

TRAY STYLE

B = BOTTOM RUNG TRAY
L = LIGHT DUTY TRAY
LB = LIGHT DUTY BOTTOM
C = 4" HIGH SPINE

For Top Standard Spine Tray
No Letter Prefix is required.
4" High Spine is only available in
Bottom Rung style, with "D" rung only.

MATERIAL

1 = ALUMINUM
4 = EPOXY PAINT
(ALUMINUM)
6 = ANODIZED
ALUMINUM

RUNG HEIGHT

3 = 3" (75MM) HIGH
4 = 4" (100MM) HIGH
6 = 6" (150MM) HIGH

RUNG SPACING

1 = 6" (150MM)
2 = 9" (225MM)
3 = 12" (300MM)
4 = 18" (450MM)
5 = 3" (75MM)
6 = 4" (100MM)

3" R.S. for Standard Tray Only.
18" R.S. only for 6" & 9" widths.
12" R.S. only for 6", 9" & 12" widths.

TRAY LENGTH

32 = 12' (3.6M)
35 = 10' (3.0M)

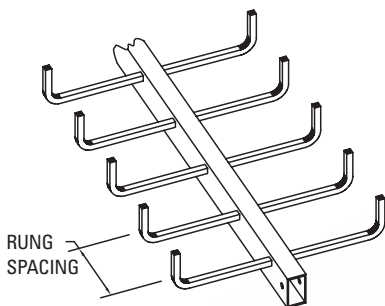
TRAY WIDTH

1 = 6" (150MM) WIDE
2 = 9" (225MM) WIDE
3 = 12" (300MM) WIDE
4 = 18" (450MM) WIDE
5 = 24" (600MM) WIDE

RUNG STYLE

R = REMOVABLE 1/2" (12MM)
TYPE "C" RUNG
D = 3/4" (19MM) TYPE "D" RUNG
RD = REMOVABLE
B = "B" HOLLOW RUNG

For Standard Type "C"
Aluminum Fixed Rung.
No Letter Suffix is required.
Removable Rung is not
available for Double Tier.



One splice connector (p/n: 0100-0420) is provided with each tray length



4 International Drive
Rye Brook, NY 10573
Toll Free: 1 888.764.7681
Phone: 914.934.2075
Fax: 914.934.2190
MonoSystems.com

MonoSystems™
wire management. managed.

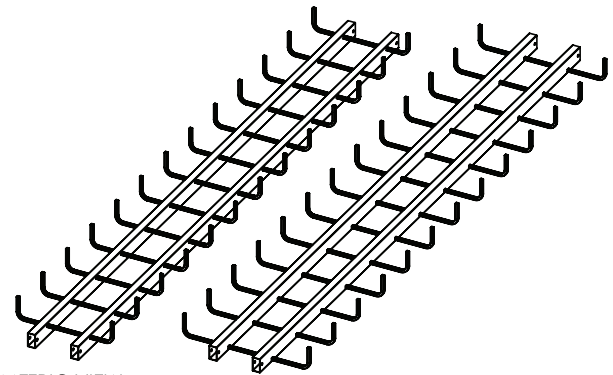
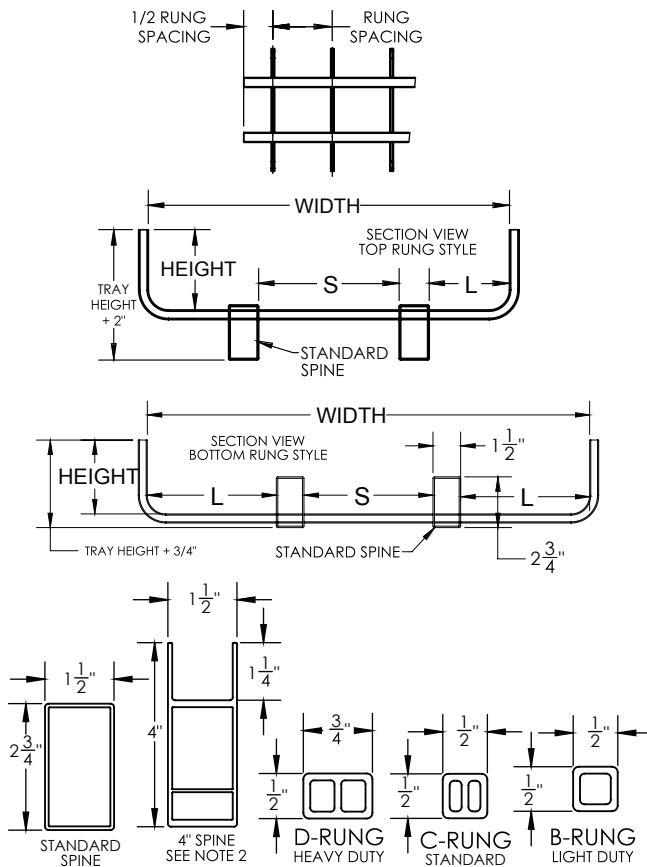
Cable Tray / Center Spine MT-DR

MonoTray™ Dual Rail
Manufactured by MonoSystems, Inc.

ALUMINUM CABLE TRAY

Notes:

- 1.) Two splice connectors (P/N: 0100-0420) and 3/8" hardware is provided with each tray length.
- 2.) Not all accessories are compatible with 4" high spine tray. 4" High spine is only available in bottom rung style with "D" rungs only. Speak with MonoSystems for more details.
- 3.) Standard lengths: 143-3/16", 12' including center hole in splice connector (or) 119-3/16", 10' including center hole in splice connector.
- 4.) Views for reference - do not scale.



TRIMETRIC VIEW
TOP RUNG STYLE

TRIMETRIC VIEW
BOTTOM RUNG STYLE



DUAL RAIL WIDTH CHART				
TRAY WIDTH	S		L	
	inch	mm	inch	mm
18"	7	178	4	100
24"	7	178	7	178
36"	15	380	9	225
30"	15	380	6	150

DUAL RAIL SPINE DEFLECTION & LOAD CLASS					
SPINE TYPE	SUPPORT SPAN		DEFLECTION		NEMA RATING
	FT	M	FT	MM	
STANDARD	12	3.6	2.25	57	1.5 SAFETY FACTOR 12C (100 lbs/ft/12')

ORDERING DATA EXAMPLE:

X-2XXX-03XX-X

TRAY STYLE
OMIT/LEAVE BLANK FOR TOP RUNG
B = BOTTOM RUNG
L = LIGHT DUTY TRAY
LB = LIGHT DUTY BOTTOM RUNG TRAY
C = 4" HIGH SPINE*

MATERIAL
1 = ALUMINUM
4 = EPOXY PAINT ALUMINUM

RUNG SPACING
1 = 6"
2 = 9"
3 = 12"
4 = 18"
5 = 3"
6 = 4"

RUNG HEIGHT
3 = 3"
4 = 4"
6 = 6"

TRAY LENGTH
32 = 12'
35 = 10'

TRAY WIDTH
4 = 18" WIDE
5 = 24" WIDE
6 = 36" WIDE
9 = 30" WIDE

RUNG STYLE
C = "C" RUNG (STANDARD)
D = "D" 3/4" RUNG (HEAVY)
B = "B" HOLLOW RUNG

3" R.S. FOR STANDARD TRAY ONLY
18" R.S. ONLY FOR 6" & 9" WIDTHS
12" R.S. ONLY FOR 6", 9" & 12" WIDTHS

4 International Drive
Rye Brook, NY 10573
Toll Free: 1 888.764.7681
Phone: 914.934.2075
Fax: 914.934.2190
MonoSystems.com



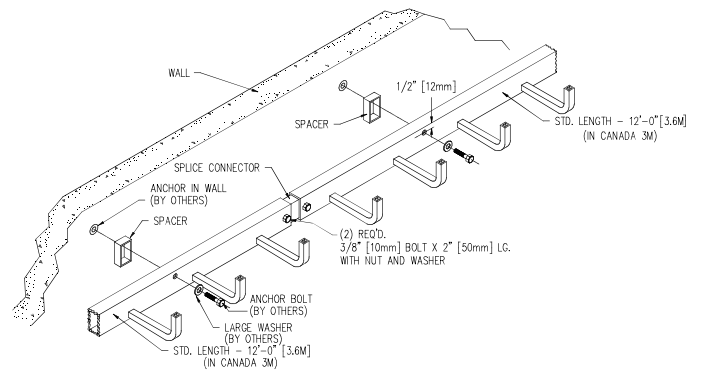
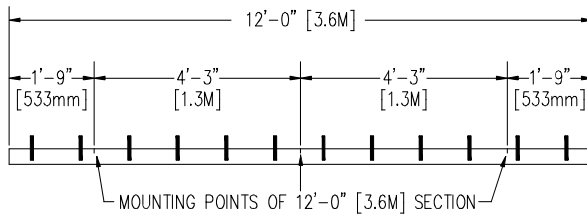
Cable Tray / Center Spine WR-BR

MonoTray™

Manufactured in the USA by MonoSystems, Inc.



BOTTOM RUNG WALL-RACK



FILE: E80034
VOL.3



CERTIFIED

ORDERING DATA EXAMPLE:

Example Tray Catalog Number: B6126-0323

Bottom Rung Wall-Rack Aluminum, 6" Rung Spacing, 3 High, 12'-0" Length, 12" Wide

X6XX-X-0XXX

TRAY STYLE

B = BOTTOM RUNG TRAY
L = LIGHT DUTY TRAY

For Top Rung
Standard Spine Tray
No Letter Prefix is required.

MATERIAL

1 = ALUMINUM
4 = EPOXY POINT (ALUMINIUM)
6 = ANODIZED ALUMINIUM

RUNG SPACING

1 = 6" (150MM)
2 = 9" (225MM)
3 = 12" (300MM)
4 = 18" (450MM)
5 = 3" (75MM)
6 = 4" (100MM)

RUNG HEIGHT

3 = 3" (75MM) HIGH
4 = 4" (100MM) HIGH
6 = 6" (150MM) HIGH

TRAY WIDTH

1 = 6" (150MM) WIDE
2 = 9" (225MM) WIDE
3 = 12" (300MM) WIDE
7 = 3" (75MM) WIDE

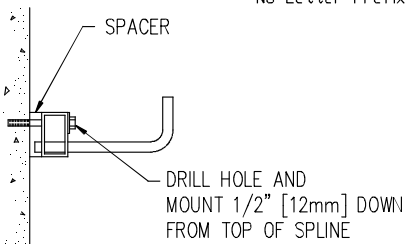
TRAY LENGTH

32 = 12' (3.6M)
35 = 10' (3.0M)

RUNG STYLE

R = REMOVEABLE 1/2" (12MM) TYPE "C" RUNG
D = 3/4" (19MM) TYPE "D" RUNG
RD = REMOVEABLE 3/4" (19MM) TYPE "D" RUNG
B = "B" HOLLOW RUNG

For Standard Type "C"
Aluminum Fixed Rung.
No Letter Suffix is required.



12" Rung Spacing
is available for 3" and 6" tray width only.

4 International Drive
Rye Brook, NY 10573
Toll Free: 1 888.764.7681
Phone: 914.934.2075
Fax: 914.934.2190
MonoSystems.com



MonoSystems™
wire management. managed.™

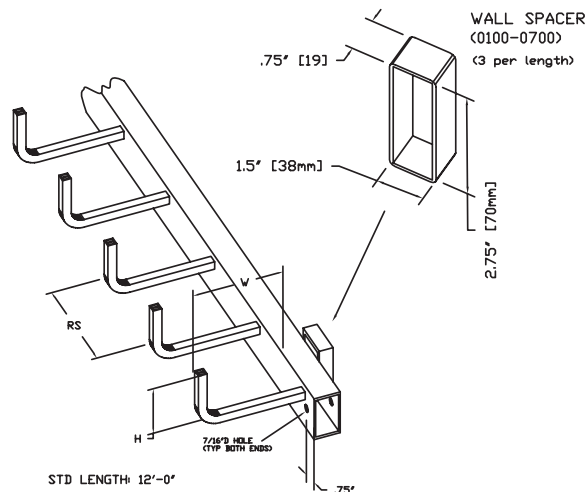
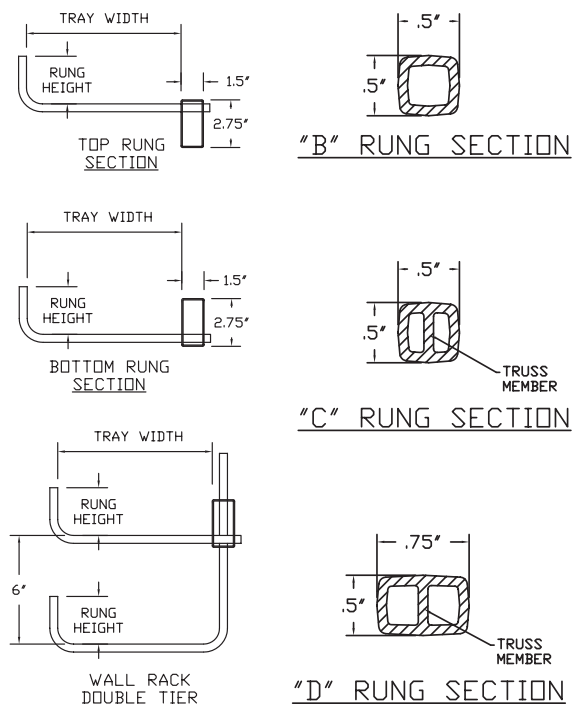
Cable Tray/Center Spine WR-ALUMINUM-MATRIX

MonoTray™

Manufactured in the USA by MonoSystems, Inc.



ALUMINUM WALL-RACK



FILE: E80034
VOL.3



CERTIFIED

ORDERING DATA EXAMPLE:

X X 1 X X - 0 X X - X

TRAY STYLE	MATERIAL	TRAY LENGTH	TRAY WIDTH	RUNG STYLE
B = BOTTOM RUNG TRAY L = LIGHT DUTY SPLINE LB = LIGHT DUTY BOTTOM RING	1 = ALUMINUM 4 = EPOXY POINT ALUMINUM 6 = ANODIZED ALUMINUM	32 = 12' (3.6M) 35 = 10' (3.0M)	1 = 6" (150MM) WIDE 2 = 9" (225MM) WIDE 3 = 12" (300MM) WIDE 7 = 3" (75MM) WIDE	R = REMOVEABLE 1/2" (12MM) TYPE "C" RUNG D = 3/4" (19MM) TYPE "D" RUNG RD = REMOVEABLE 3/4" (19MM) TYPE "D" RUNG B = "B" HOLLOW RUNG
TRAY STYLE	RUNG SPACING	RUNG HEIGHT		
6 = WALL RACK 9 = WALL RACK DOUBLE TIER For Top Rung Standard Spine Tray No Letter Prefix is required.	1 = 6" (150MM) 2 = 9" (225MM) 3 = 12" (300MM) 5 = 3" (75MM)	3 = 3" (75MM) HIGH 4 = 4" (100MM) HIGH 6 = 6" (150MM) HIGH		

4 International Drive
Rye Brook, NY 10573
Toll Free: 1 888.764.7681
Phone: 914.934.2075
Fax: 914.934.2190
MonoSystems.com



MonoSystems™
wire management. managed.

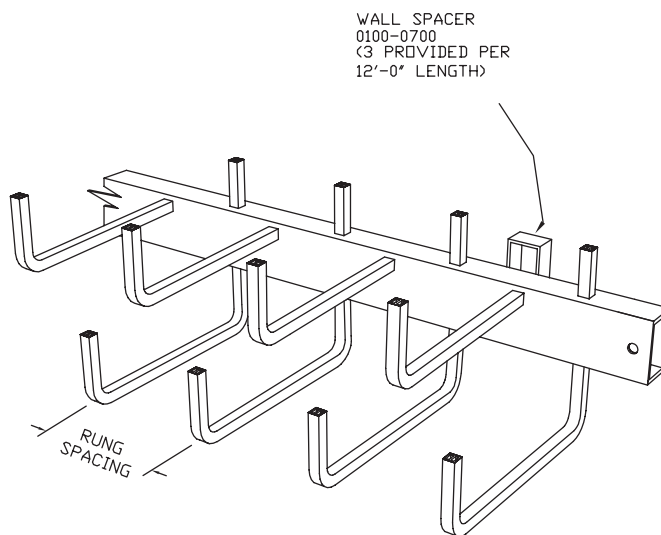
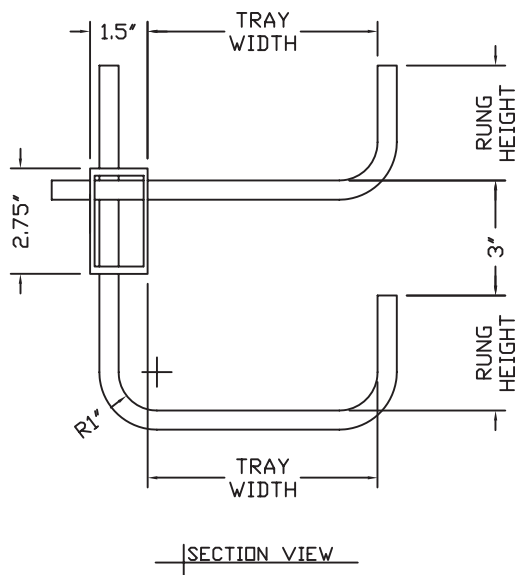
Cable Tray / Center Spine MTWR-DT

MonoTray™

Manufactured in the USA by MonoSystems, Inc.



MONO-TRAY WALL RACK



FILE: E80034
VOL.3



CERTIFIED

ORDERING DATA EXAMPLE:

Example Tray Catalog Number: 9126-0323

Bottom Rung Wall-Rack Aluminum, 9" Rung Spacing, 3" High, 12'- 0" Length, 12" Wide

9 X X X - 0 X X X

MATERIAL

- 1 = ALUMINUM
- 4 = EPOXY POINT ALUMINIUM
- 6 = ANODIZED ALUMINIUM

RUNG SPACING

- 1 = 6" (150MM)
- 2 = 9" (225MM)
- 3 = 12" (300MM)
- 4 = 18" (450MM)
- 5 = 3" (75MM)
- 6 = 4" (100MM)

12" Rung Spacing is available for 3' and 6' tray width only.

TRAY LENGTH

- 32 = 12' (3.6M)
- 35 = 10' (3.0M)

RUNG HEIGHT

- 3 = 3" (75MM) HIGH
- 4 = 4" (100MM) HIGH
- 6 = 6" (150MM) HIGH

TRAY WIDTH

- 1 = 6" (150MM) WIDE
- 2 = 9" (225MM) WIDE
- 3 = 12" (300MM) WIDE
- 7 = 3" (75MM) WIDE

RUNG STYLE

- D = 3/4" (19MM) TYPE "D" RUNG
- B = "B" HOLLOW RUNG
- For Standard Type "C" Aluminum Fixed Rung. No Letter Suffix is required.

4 International Drive
Rye Brook, NY 10573
Toll Free: 1 888.764.7681
Phone: 914.934.2075
Fax: 914.934.2190
MonoSystems.com



MonoSystems™
wire management. managed.™

Cable Tray / Center Spine MT-DRF

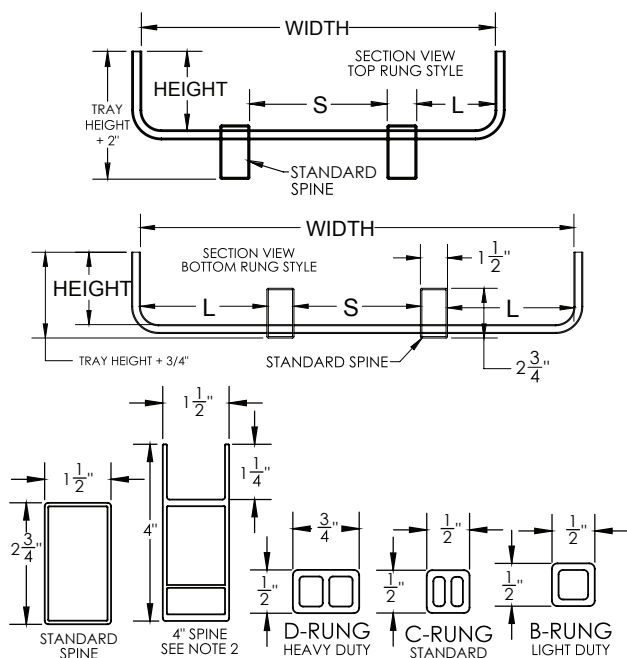
MonoTray™ Dual Rail Fittings

Manufactured by MonoSystems, Inc.

ALUMINUM CABLE TRAY

Notes:

- 1.) Splice connectors (P/N: 0100-0420) and 3/8" hardware provided with each fitting. Quantity to vary by fitting ordered.
- 2.) Not all accessories are compatible with 4" high spine tray. 4" high spine is only available in bottom rung style with "D" rungs only. Speak with MonoSystems for more details.
- 3.) Most elbows, tees, and directional changes can be achieved by utilizing standard component accessories and quick connect fittings. Welded fittings are designed to accommodate specific cable radii requirements. For support documentation or greater fitting details, speak with monosystems.
- 4.) Views for reference - do not scale.



ORDERING DATA EXAMPLE:

X-210X-XXXX-X

TRAY STYLE
OMIT/LEAVE BLANK
FOR TOP RUNG
B = BOTTOM RUNG
L = LIGHT DUTY TRAY
LB = LIGHT DUTY
BOTTOM RUNG TRAY
C = 4" HIGH SPINE*

MATERIAL
1 = ALUMINUM
4 = EPOXY PAINT
ALUMINUM

RUNG HEIGHT
3 = 3"
4 = 4"
6 = 6"

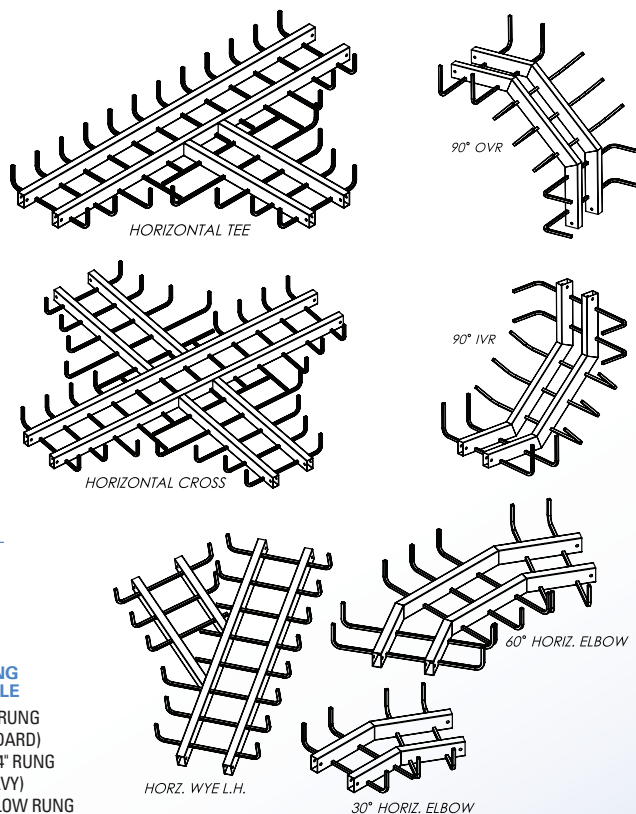
RADIUS
1 = 12"
2 = 18"
3 = 24"
4 = 36"

TRAY WIDTH
4 = 18" WIDE
5 = 24" WIDE
6 = 36" WIDE
9 = 30" WIDE

RUNG STYLE
C = "C" RUNG
(STANDARD)
D = "D" 3/4" RUNG
(HEAVY)
B = "B" HOLLOW RUNG

FITTING TYPE

01 = 30 IVR
02 = 45 IVR
03 = 60 IVR
04 = 90 IVR
05 = 30 OVR
06 = 45 OVR
07 = 60 OVR
08 = 90 OVR
09 = VERTICAL CROSS
10 = VERTICAL TEE IVR
11 = VERTICAL TEE OVR
12 = CABLE HANGER ELBOW
20 = 30 HORIZONTAL ELBOW
21 = 45 HORIZONTAL ELBOW
22 = 60 HORIZONTAL ELBOW
23 = 90 HORIZONTAL ELBOW
24 = HORIZONTAL CROSS
25 = HORIZONTAL TEE
26 = HORIZONTAL WYE L.H.
27 = HORIZONTAL TEE R.H.



4 International Drive
Rye Brook, NY 10573
Toll Free: 1 888.764.7681
Phone: 914.934.2075
Fax: 914.934.2190
MonoSystems.com



MonoSystems™
Expect. Direct.

Cable Tray/Center Spine OX00-0750

MonoTray™ Accessories

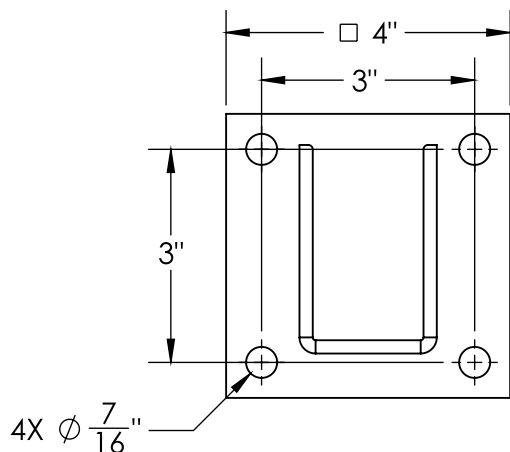
Manufactured in the USA by MonoSystems, Inc.



WALL PLATE CONNECTOR

Notes

- 1.) Ordered as each.
- 2.) For wall termination and stabilization or MonoTray run.
For use with top or bottom run MonoTray.
- 3.) Wall fasteners and vertical supports by others.
- 4.) Load 600lbs capacity.
Minimum support distance is 6'-0".
- 5.) Views for reference - Do not scale.

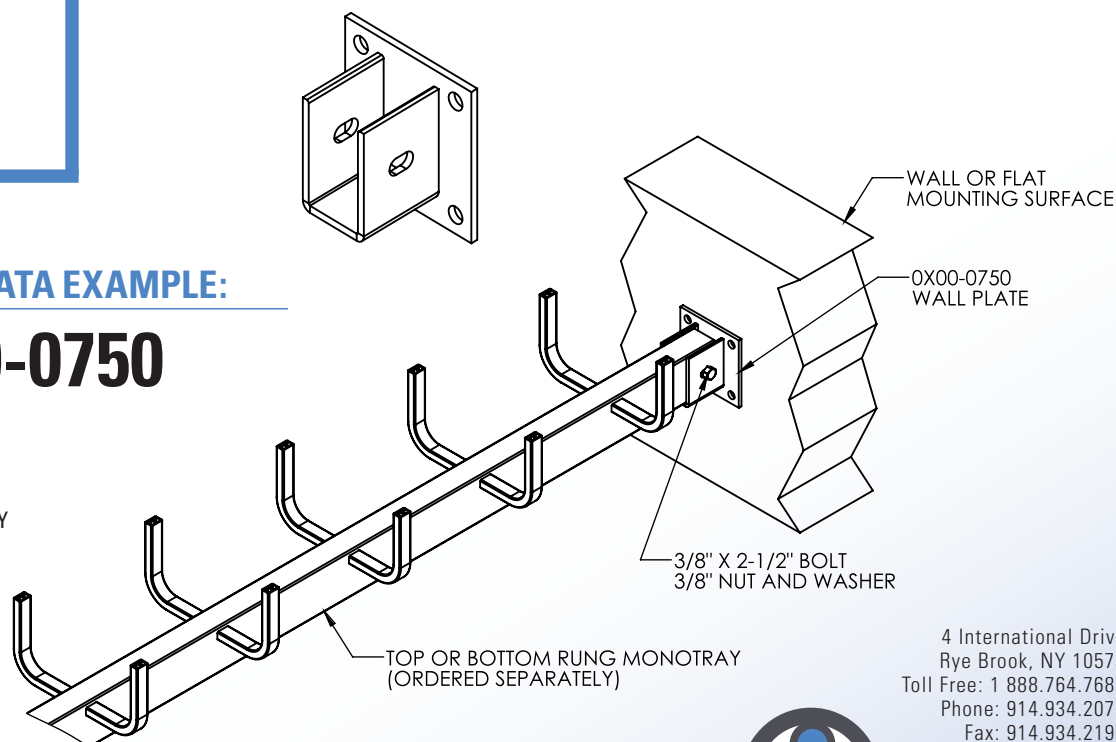


ORDERING DATA EXAMPLE:

OX00-0750

MATERIAL

- 1 = ALUMINUM TRAY
2 = STEEL TRAY



4 International Drive
Rye Brook, NY 10573
Toll Free: 1 888.764.7681
Phone: 914.934.2075
Fax: 914.934.2190
MonoSystems.com



MonoSystems™
wire management. managed.™

Cable Tray / Center Spine 0X0X-0440

MonoTray™ Accessories

Manufactured in the USA by MonoSystems, Inc.



FILE: E80034
VOL.3

MONO-TRAY DIVIDER

ORDERING DATA EXAMPLE:

0X0X-0440

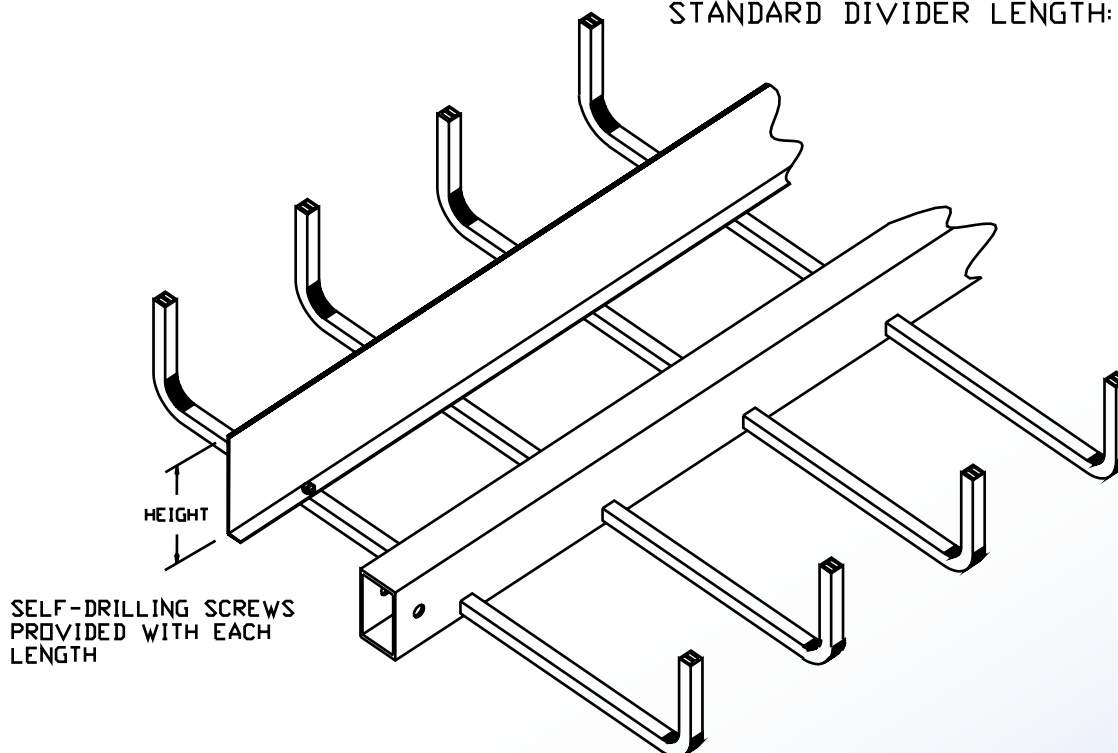
MATERIAL

- 1 = ALUMINUM TRAY
- 2 = STEEL TRAY

DIVIDER HEIGHT

- 3 = 3" (75MM)
- 4 = 4" (100MM)
- 6 = 6" (150MM)

STANDARD DIVIDER LENGTH: 6'-0"



SELF-DRILLING SCREWS
PROVIDED WITH EACH
LENGTH

4 International Drive
Rye Brook, NY 10573
Toll Free: 1 888.764.7681
Phone: 914.934.2075
Fax: 914.934.2190
MonoSystems.com

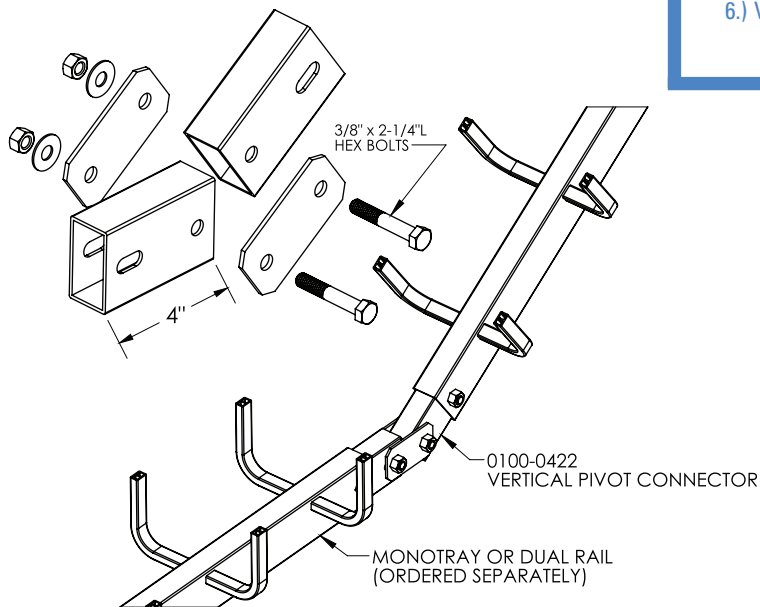


MonoSystems™
wire management. managed.™

Cable Tray/Center Spine 0100-042X



PART NUMBER: 0100-0422
ALUMINUM VERTICAL PIVOT CONNECTOR
ALLOWS FOR VERICAL BENDS



MonoTray™ Accessories

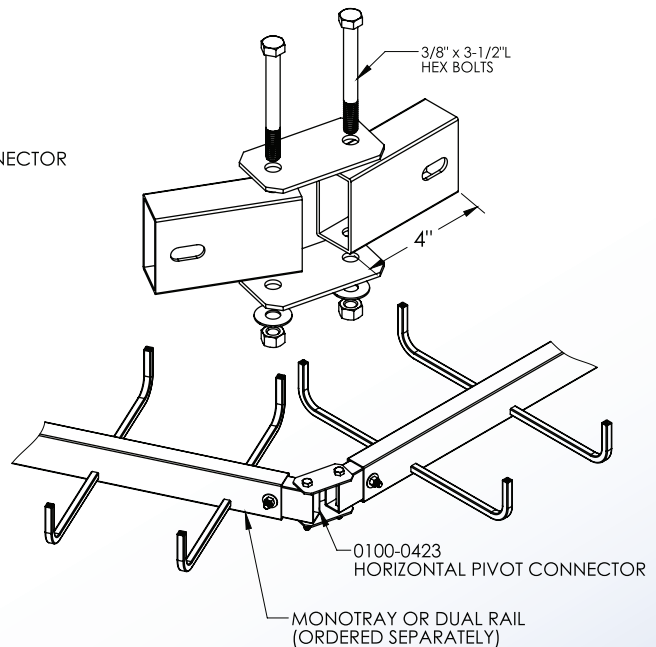
Manufactured in the USA by MonoSystems, Inc.

ALUMINUM VERTICAL PIVOT CONNECTOR

Notes:

- 1.) Material: Mill finish 6063 aluminum.
- 2.) Attach pivot connector to tray using provided hardware as shown.
- 3.) Tray must be supported a minimum distance of 2' from connector location.
- 4.) Load: 100lb capacity.
- 5.) For fixed vertical bends see P/N: 0100-0650-45 or 0100-0650-90.
For fixed horizontal bends see P/N: 0100-0660-45 or 0100-0660-90
- 6.) Views for reference - do not scale.

PART NUMBER: 0100-0423
ALUMINUM HORIZONTAL PIVOT CONNECTOR
ALLOWS FOR HORIZONTAL BENDS
(UP TO 80° FOR 18"W OR LESS TRAY)



4 International Drive
Rye Brook, NY 10573
Toll Free: 1 888.764.7681
Phone: 914.934.2075
Fax: 914.934.2190
MonoSystems.com



Cable Tray / Center Spine 0100-047X



FILE: E80034
VOL.3

MonoTray™ Accessories

Manufactured in the USA by MonoSystems, Inc.

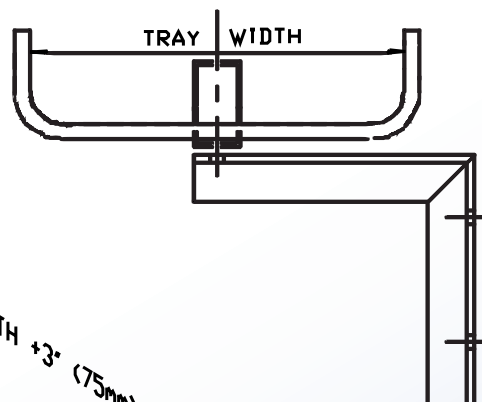
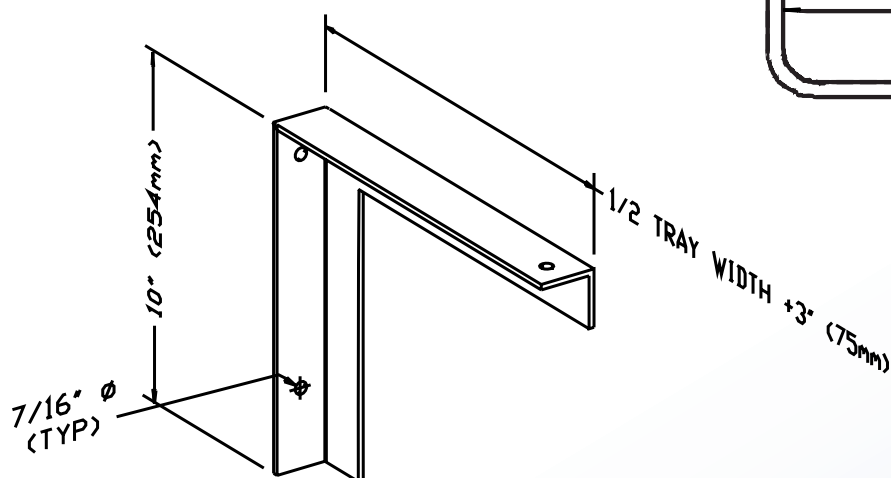


MONO-TRAY WALL SUPPORT

Notes

- 1.) 7/16" (11mm) diameter mounting holes provide quick and easy mounting of dual-rail cable tray. Tray may be mounted above or hung below wall support. Material: Aluminum.
For top or bottom rung.
Views for reference, do not scale.

PART NO.	TRAY WIDTH
0100-0477	6
0100-0470	9
0100-0471	12
0100-0472	18
0100-0473	24



4 International Drive
Rye Brook, NY 10573
Toll Free: 1 888.764.7681
Phone: 914.934.2075
Fax: 914.934.2190
MonoSystems.com



MonoSystems™
wire management. managed.™

Cable Tray / Center Spine 0100-055X



FILE: E80034
VOL.3

MonoTray™ Accessories

Manufactured in the USA by MonoSystems, Inc.



HORIZONTAL QUICK TEE (TOP RUNG)

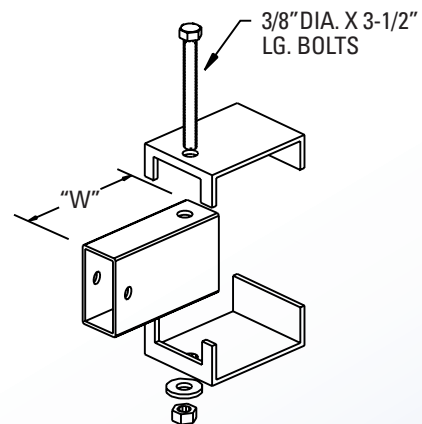
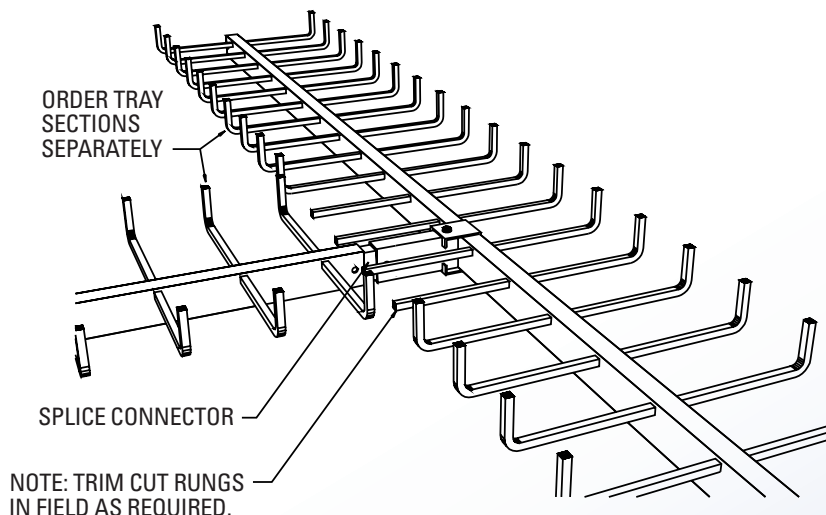
Notes

- 1.) Quick tee attach to straight sections of tray.

TRAY WIDTH	WALL RACK	MONO TRAY	DUAL RAIL
	ALUMINUM TRAY P/N	ALUMINUM TRAY P/N	ALUMINUM TRAY P/N
3	0100-0557		
6	0100-0551	0100-0557	
9	0100-0552	0100-0550	
12	0100-0553	0100-0551	
18		0100-0552	0100-0550
24		0100-0553	0100-0551
30			0100-0551
36			0100-0553

ALUMINUM TRAY P/N	TRAY WIDTH "W"
0100-0557	3" (75mm)
0100-0550	4.5" (112mm)
0100-0551	6" (150mm)
0100-0552	9" (225mm)
0100-0553	12" (300mm)

QUICKLY CREATES A 90° RIGHT ANGLE TEE OR BELOW.
MAYBE BE USED WITH TOP OR BOTTOM RUNG CABLE OF ALL HEIGHTS.
(FOR DUAL-RAIL SPECIFY TWO QUICK TEES.)
FOR STEEL CABLE TRAY UTILIZE BOTTOM RUNG QUICK
TEES FOR BOTH TOP AND BOTTOM RUNG APPLICATIONS.



4 International Drive
Rye Brook, NY 10573
Toll Free: 1 888.764.7681
Phone: 914.934.2075
Fax: 914.934.2190
MonoSystems.com



MonoSystems™
wire management. managed.™

Cable Tray / Center Spine 0100-069X



FILE: E80034
VOL.3

MonoTray™ Accessories

Manufactured in the USA by MonoSystems, Inc.



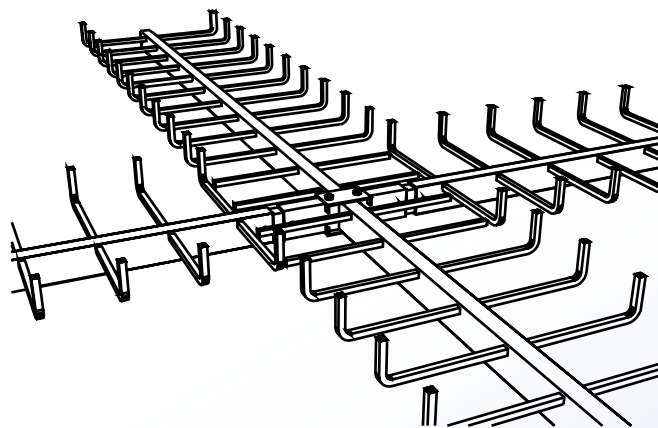
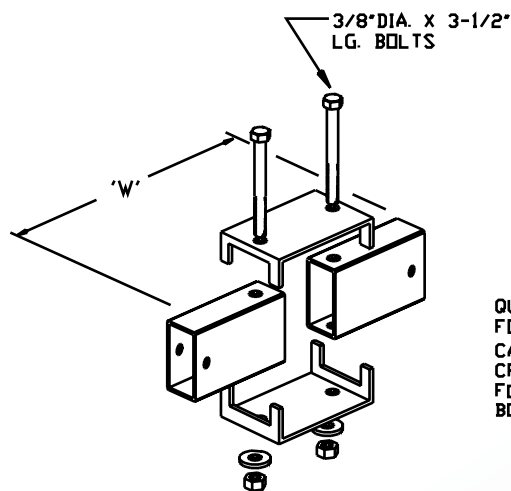
TOP RUNG HORIZONTAL QUICK CROSS

Notes

1.) Nuts, bolts, washers are provided.

ALUMINUM TRAY P/N	PART WIDTH 'W'
0100-0691	6" (150mm)
0100-0692	9" (225mm)
0100-0693	12" (300mm)
0100-0694	18" (450mm)
0100-0695	24" (600mm)

	WALL RACK	MONO TRAY
TRAY WIDTH	ALUMINUM TRAY P/N	ALUMINUM TRAY P/N
3	0100-0697	
6	0100-0691	0100-0691
9	0100-0692	0100-0692
12	0100-0693	0100-0693
18		0100-0694
24		0100-0695



QUICKLY CREATES A 90° CROSS.
FOR USE WITH TOP RUNG ALUMINUM MONO TRAY, AND WALL RACK
CABLE TRAY. NOT TO BE USED WITH DUAL-RAIL CABLE TRAY.
CROSSES ARE ACCOMPLISHED BY UTILIZING QUICK TEES.
FOR STEEL TRAY UTILIZE BOTTOM RUNG QUICK TEES FOR
BOTH TOP AND BOTTOM RUNG APPLICATIONS.

4 International Drive
Rye Brook, NY 10573
Toll Free: 1 888.764.7681
Phone: 914.934.2075
Fax: 914.934.2190
MonoSystems.com



MonoSystems™
wire management. managed.™

Cable Tray/Center Spine

0100-0471

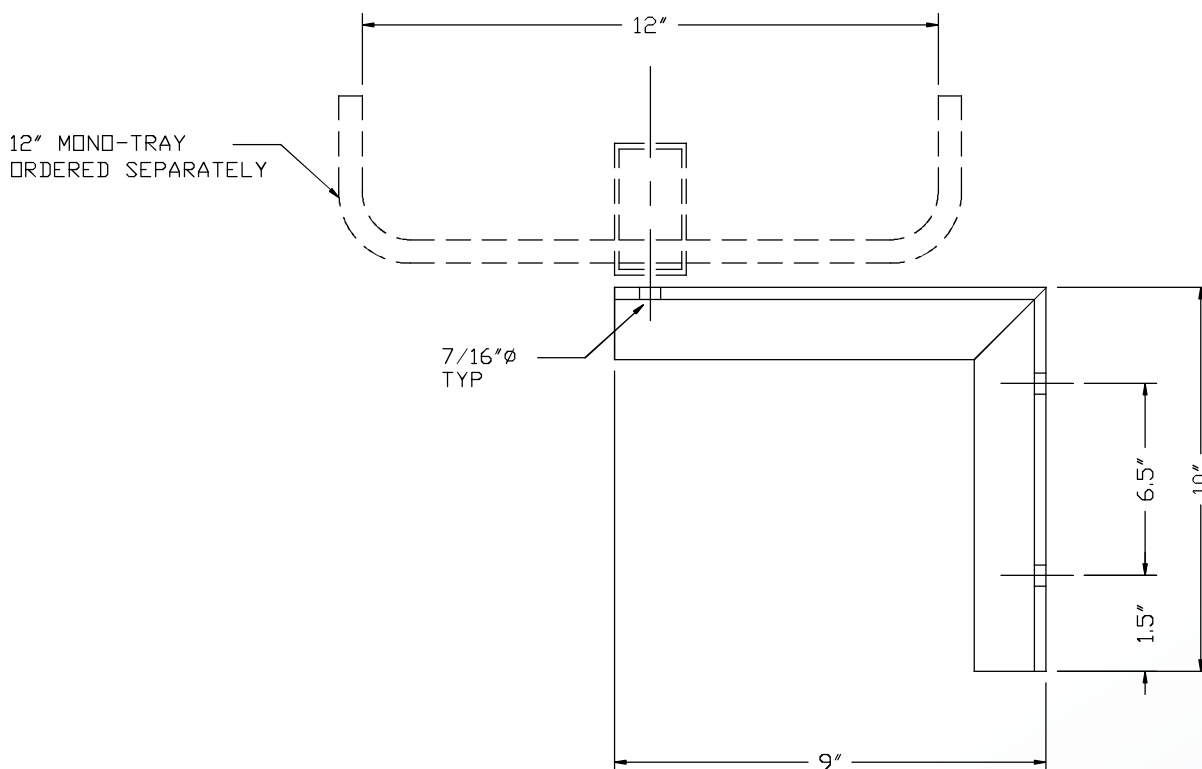
MonoTray™ Accessories

Manufactured in the USA by MonoSystems, Inc.



FILE: E80034
VOL.3

12" WIDE MONO-TRAY WALL SUPPORT



MATERIAL: 1-1/2" X 1-1/2" X 1/4" ALUMINUM ANGLE
WORKING LOAD - 500 LBS.
HARDWARE BY OTHERS

4 International Drive
Rye Brook, NY 10573
Toll Free: 1 888.764.7681
Phone: 914.934.2075
Fax: 914.934.2190
MonoSystems.com



MonoSystems™
wire management. managed.™

Cable Tray / Center Spine

0100-0500

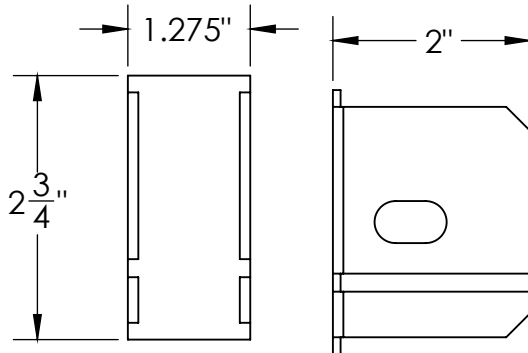
MonoTray™ Accessories
Manufactured in the USA by MonoSystems, Inc.



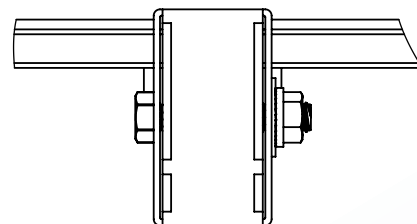
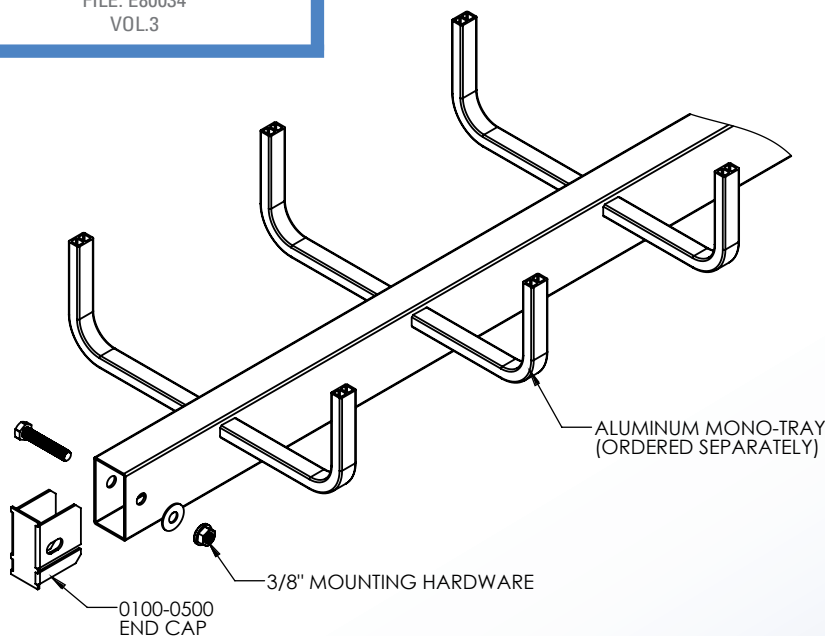
ALUMINUM END CAP ALUMINUM MONO-TRAY

Notes

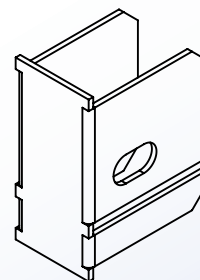
- 1.) Ordered as each.
- 2.) End caps may be utilized with Mono Tray, dual rail, wall rack, wall rack double tier, and "CB" series tray.
- 3.) Material: 0.080" aluminum.
- 4.) Views for reference - do not scale.



FILE: E80034
VOL.3



ASSEMBLY VIEW



4 International Drive
Rye Brook, NY 10573
Toll Free: 1 888.764.7681
Phone: 914.934.2075
Fax: 914.934.2190
MonoSystems.com



MonoSystems™
wire management. managed.™

Cable Tray / Center Spine

0100-0540

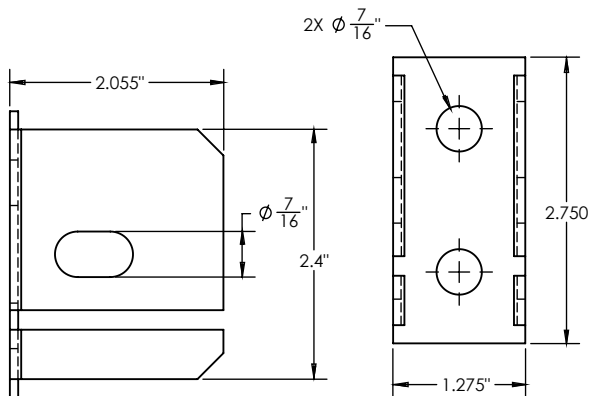
MonoTray™ Accessories
Manufactured in the USA by MonoSystems, Inc.



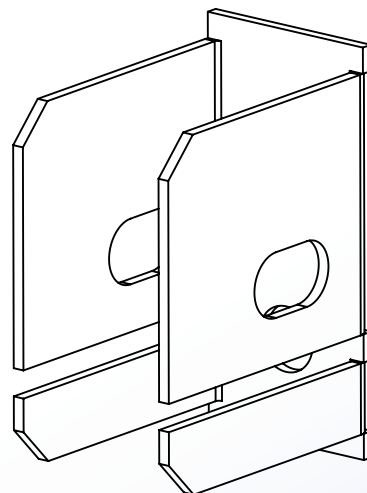
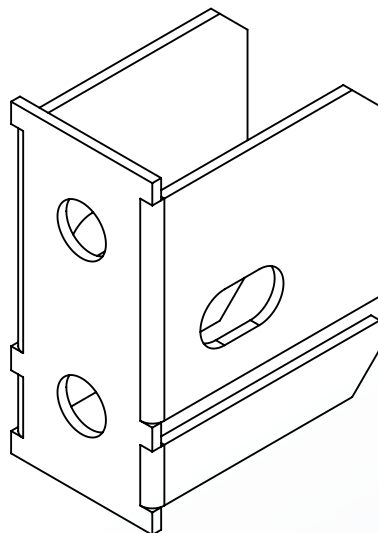
TRAY TO WALL CONNECTOR

Notes

- 1.) For use with both top and bottom rung Mono-Tray.
- 2.) Tray attachment hardware included.
Wall mounting hardware (by others).
- 3.) Views for reference - do not scale.



FILE: E80034
VOL.3



4 International Drive
Rye Brook, NY 10573
Toll Free: 1 888.764.7681
Phone: 914.934.2075
Fax: 914.934.2190
MonoSystems.com



MonoSystems™
wire management. managed.™

Cable Tray / Center Spine 0200-056X



MonoTray™ Accessories

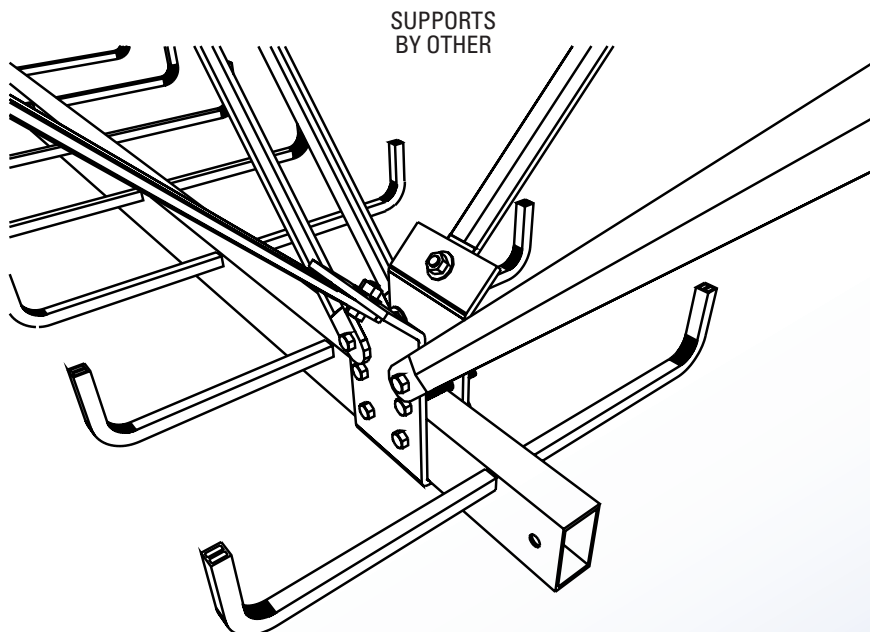
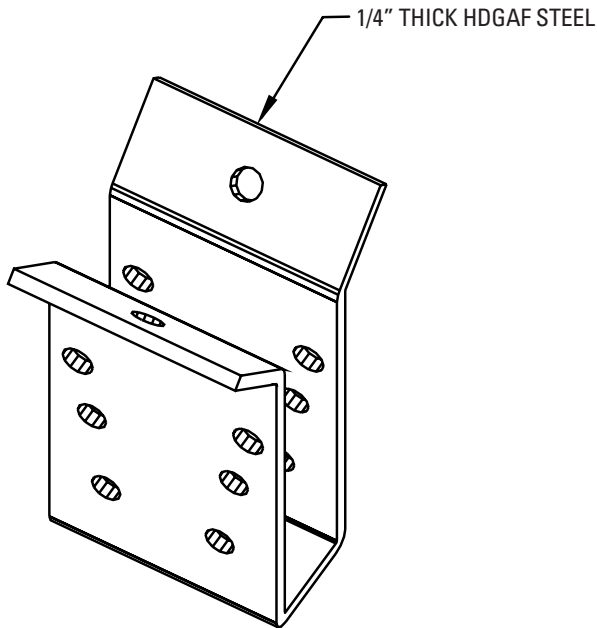
Manufactured in the USA by MonoSystems, Inc.



SEISMIC RESTRAINT

Notes

- 1.) Mono-Systems, Inc. Requires the end user of the cable tray system to obtain the service of a licensed seismic consultant to design the bracing for their specific zone requirements.



ORDERING DATA EXAMPLE:

0200-056X

MATERIAL

5 = ALUMINUM TRAY P/N#
7 = STEEL TRAY P/N#



4 International Drive
Rye Brook, NY 10573
Toll Free: 1 888.764.7681
Phone: 914.934.2075
Fax: 914.934.2190
MonoSystems.com

MonoSystems™
wire management. managed.

Cable Tray / Center Spine

0200-0615

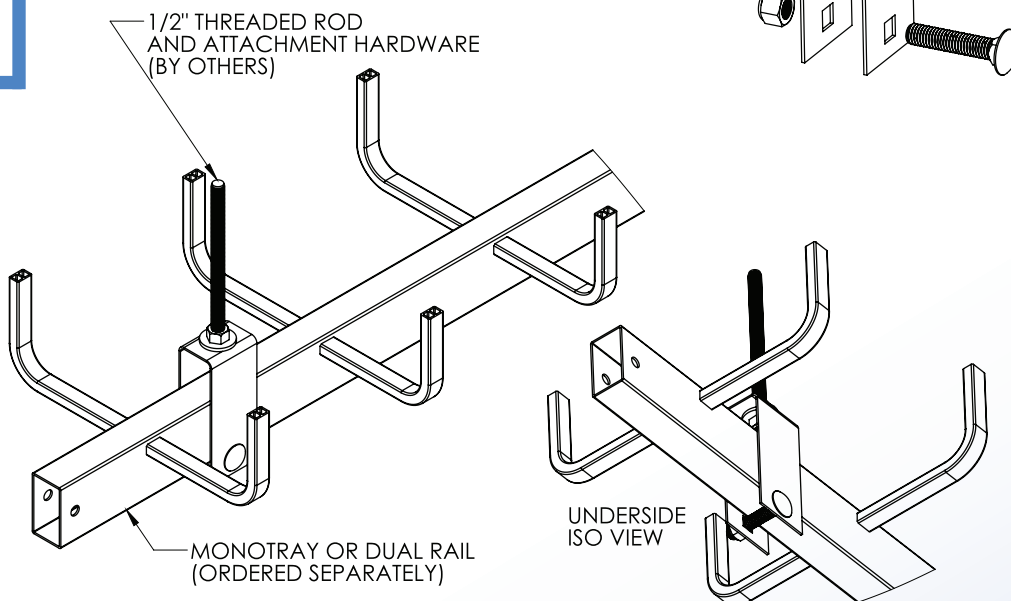
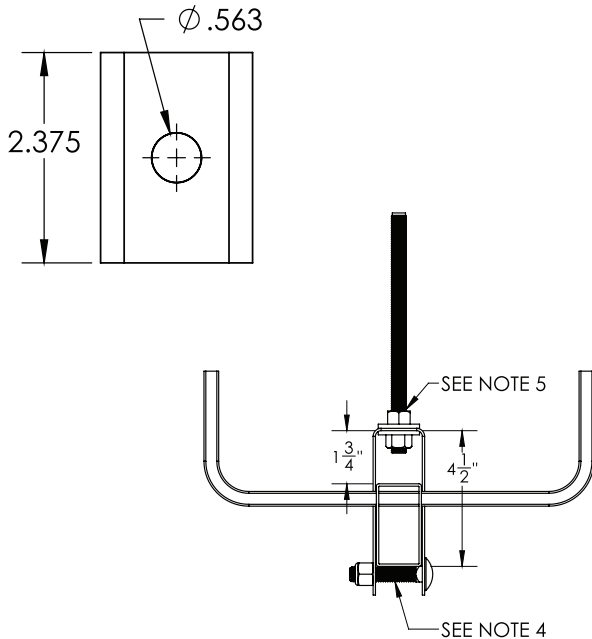
MonoTray™ Accessories

Manufactured by MonoSystems, Inc.

QUICK STRAP CLEVIS HANGER

Notes:

- 1.) Material: 14GA Galv. Steel.
- 2.) Use to support center spine tray between splices without drilling.
- 3.) For use with aluminum MonoTray and dual rail trays.
- 4.) To install, slide hanger around tray and feed 1/2-13 x 2-1/2" carriage bolt thru square hole. Capture on other end with 1/2-13 nut (provided). Tray spine should then rest on carriage bolt.
- 5.) Ø 1/2" Threaded rod and rod attachment hardware (by others).
- 6.) Views for reference - do not scale.



4 International Drive
Rye Brook, NY 10573
Toll Free: 1 888.764.7681
Phone: 914.934.2075
Fax: 914.934.2190
MonoSystems.com



Cable Tray / Center Spine 0200-0810-L-XX

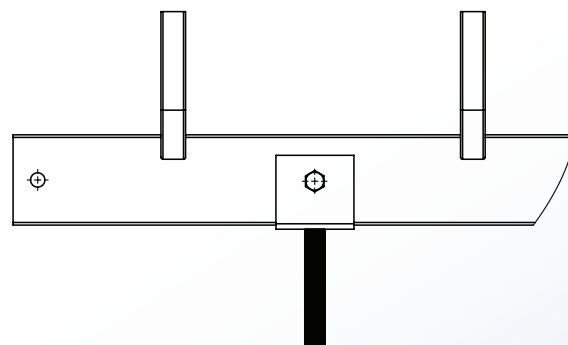
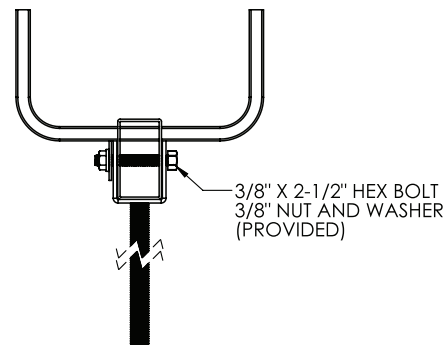
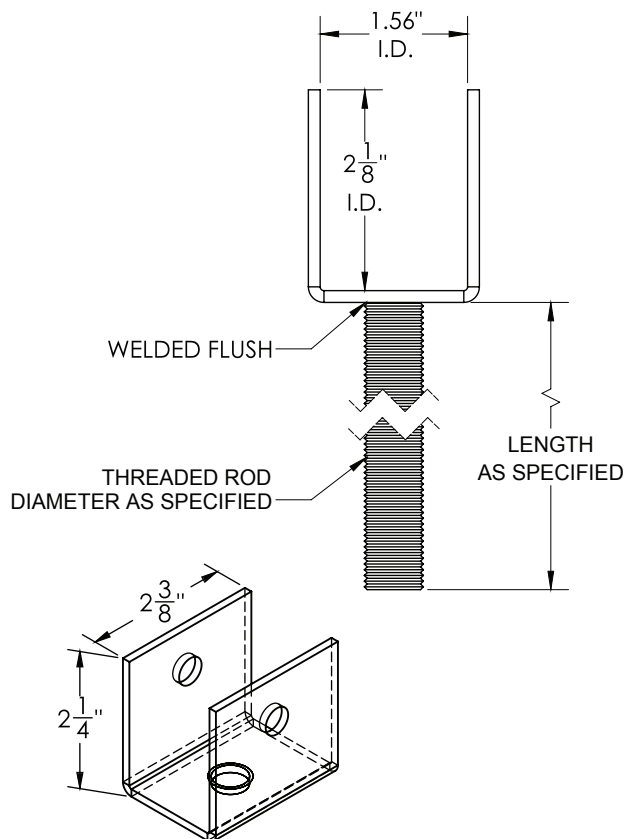
MonoTray™ Accessories

Manufactured by MonoSystems, Inc.

CENTER SPINE RACK SUPPORT FOR ALUMINUM MONO-TRAY

Notes:

- 1.) Use to support aluminum MonoTray from below.
- 2.) Ordered as each. Bracket material: 12GA steel.
- 3.) Threaded rod hardware (by others).
- 4.) Views for reference - do not scale.



ORDERING DATA EXAMPLE:

0200-0810-L-XX-XX

LENGTH OF
THEADED ROD
(IN INCHES)

12 = 12"
18 = 18"
24 = 24"
36 = 36"

OR AS REQUIRED

Ø OF
THREADED ROD

1/2 = 1/2-13
5/8 = 5/8-11

FINISH OF
BRACKET

PB = PAINTED BLACK
PR = PAINTED RED
YZ = YELLOW ZINC PLATING

* ADDITIONAL CONFIGURATIONS
AVAILABLE. SPEAK WITH
MONOSYSTEMS TO CHOOSE.

4 International Drive
Rye Brook, NY 10573
Toll Free: 1 888.764.7681
Phone: 914.934.2075
Fax: 914.934.2190
MonoSystems.com



MonoSystems™
Expect. Direct.

Cable Tray/Center Spine

0800-071X-XX

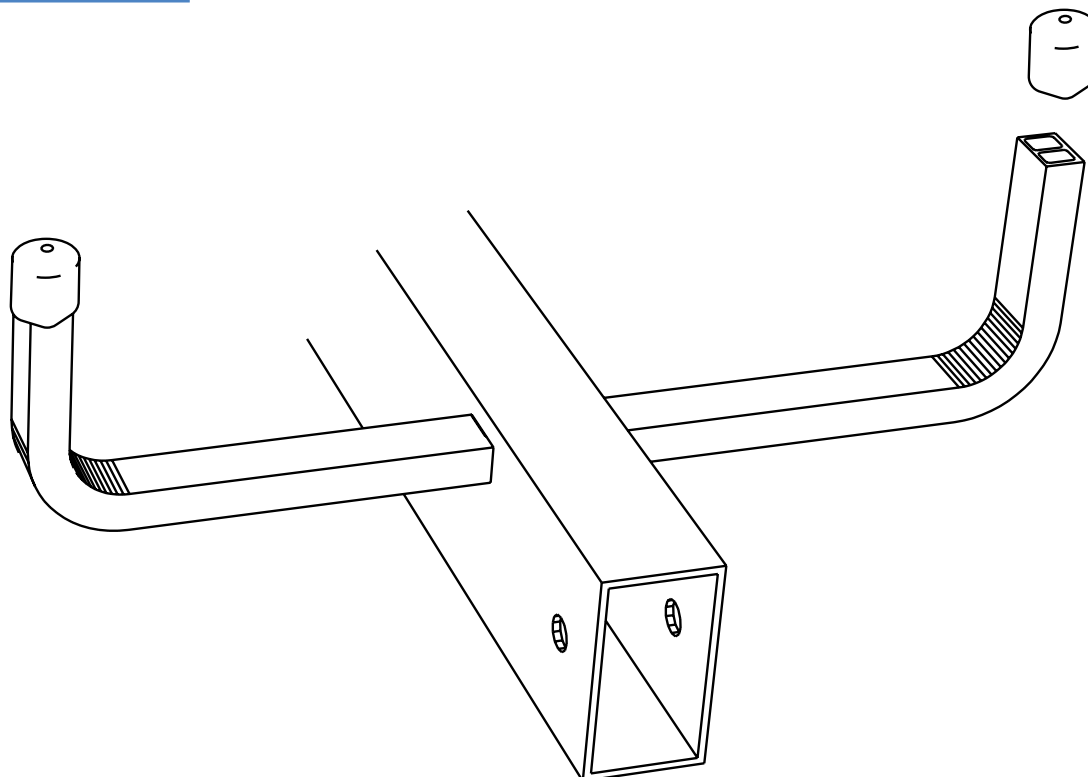
MonoTray™ Accessories

Manufactured in the USA by MonoSystems, Inc.



FILE: E80034
VOL.3

RUNG CAPS



RUNG CAPS		
PART NO.	COLOR	FOR USE WITH
0800-0710-BK	BLACK	TYPE "C" ALUMINUM RUNG (STD.) & TYPE "B"
0800-0710-GY	GREY	
0800-0710-RD	RED	
0800-0711-BK	BLACK	TYPE "D" ALUMINUM RUNG
0800-0711-FD	FLR. ORANGE	
0800-0711-BK	BLACK	TYPE "E" STEEL RUNG (STD.)
0800-0711-FD	FLR. ORANGE	

MONO-TRAY SHOWN FOR
REFERENCE. RUNG CAPS
MAY BE UTILIZED WITH
MONO-TRAY, DUAL-RAIL, AND
WALL-RACK PRODUCTS. CONSULT
CATALOG FOR DETAILS.

4 International Drive
Rye Brook, NY 10573
Toll Free: 1 888.764.7681
Phone: 914.934.2075
Fax: 914.934.2190
MonoSystems.com



MonoSystems™
wire management. managed.™

Cable Tray / Center Spine

02100-041X



FILE: E80034
VOL.3

MonoTray™ Accessories

Manufactured in the USA by MonoSystems, Inc.

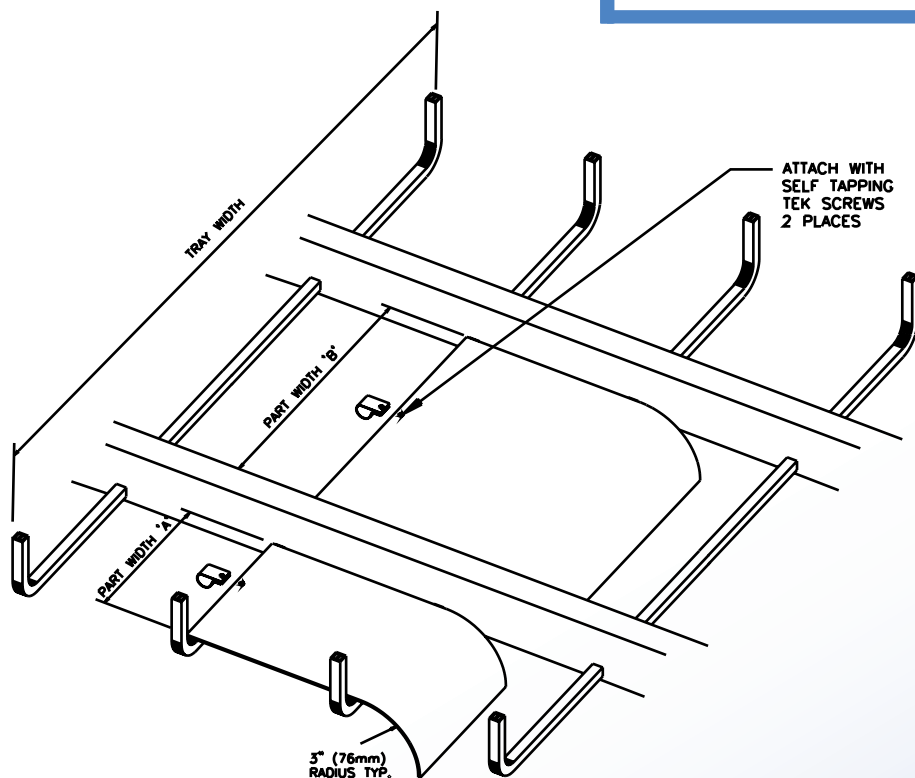


ALUMINUM DROPOUT FOR DUAL RAIL MONO-TRAY

Notes

- 1.) Material: Mill finish aluminum 6063.
- 2.) Load 50 lbs capacity.
- 3.) Minimum support distance is 6'-0".

DUAL-RAIL ALUMINUM DROPOUT							
TRAY WIDTH	OUTSIDE DROPOUT WIDTH 'A'		ALUMINUM CAT. P/N OUTSIDE		INSIDE DROPOUT WIDTH 'B'		ALUMINUM CAT. P/N INSIDE
	IN.	mm			IN.	mm	
18"	3"	76	2100-0418		6.88"	175	2100-0417
24"	6"	152	2100-0418		6.88"	175	2100-0417
30"	5"	127	2100-0417		14.88"	378	2100-0411
36"	8"	203	2100-0410		14.88"	378	2100-0411



4 International Drive
Rye Brook, NY 10573
Toll Free: 1 888.764.7681
Phone: 914.934.2075
Fax: 914.934.2190
MonoSystems.com



MonoSystems™
wire management. managed.™

Cable Tray / Center Spine 2100-047X



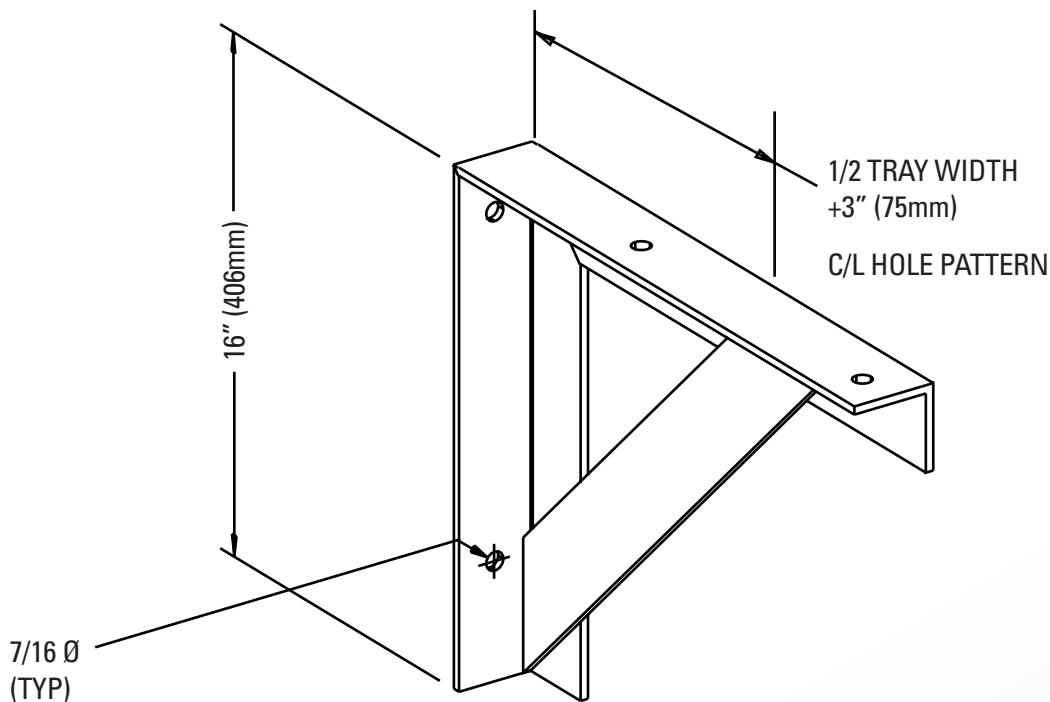
MonoTray™ Accessories

Manufactured in the USA by MonoSystems, Inc.



DUAL-RAIL WALL SUPPORT

PART NO.	TRAY WIDTH
2100-0474	18
2100-0475	24
2100-0479	30
2100-0476	36



7/16" (11mm) DIAMETER MOUNTING HOLES
PROVIDE QUICK AND EASY MOUNTING OF
DUAL-RAIL CABLE TRAY. TRAY MAY BE MOUNTED
ABOVE OR HUNG BELOW WALL SUPPORT.
MATERIAL: ALUMINUM.

4 International Drive
Rye Brook, NY 10573
Toll Free: 1 888.764.7681
Phone: 914.934.2075
Fax: 914.934.2190
MonoSystems.com



MonoSystems™
wire management. managed.™

Cable Tray/Center Spine BOX00-055X



FILE: E80034
VOL.3

MonoTray™ Accessories

Manufactured in the USA by MonoSystems, Inc.



HORIZONTAL QUICK TEE FOR BOTTOM RUNG TRAY

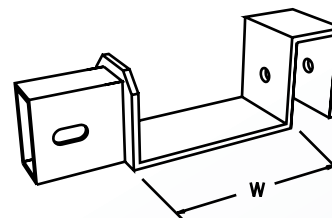
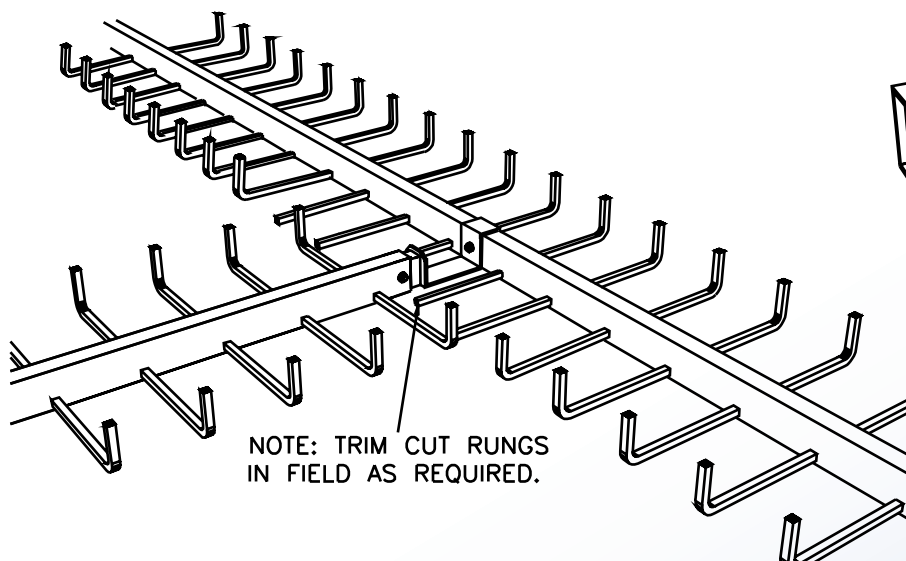
TRAY WIDTH	WALL RACK		MONO TRAY		DUAL RAIL	
	ALUMINUM TRAY P/N	STEEL TRAY P/N	ALUMINUM TRAY P/N	STEEL TRAY P/N	ALUMINUM TRAY P/N	STEEL TRAY P/N
3	B0100-0557	B0200-0557				
6	B0100-0551	B0200-0551	B0100-0557	B0200-0557		
9	B0100-0552	B0200-0552	B0100-0550	B0200-0550		
12	B0100-0553	B0200-0553	B0100-0551	B0200-0551		
18			B0100-0552	B0200-0552	B0100-0550	B0200-0550
24			B0100-0553	B0200-0553	B0100-0551	B0200-0551
30					B0100-0551	B0200-0551
36					B0100-0552	B0200-0552

QUICKLY CREATES A 90° RIGHT ANGLE TEE OR ELBOW.
MAY BE USED WITH TOP OR BOTTOM RUNG CABLE
OF ALL HEIGHTS.

FOR USE WITH MONO-TRAY, DUAL-TRAY AND
WALL RACK CABLE TRAY. (FOR DUAL-RAIL SPECIFY
TWO QUICK TEES.)

MAY ALSO BE USED TO ACCOMPLISH 90° ELBOWS
WHEN INSTALLED AT END OF CABLE TRAY RUN.
FOR STEEL CABLE TRAY UTILIZE BOTTOM RUNG
QUICK TEES FOR BOTH TOP AND BOTTOM RUNG APPLICATIONS.

ALUMINUM TRAY P/N	STEEL TRAY P/N	PART WIDTH 'W'
B0100-0557	B0200-0557	3" (75mm)
B0100-0550	B0200-0550	4.5" (112mm)
B0100-0551	B0200-0551	6" (150mm)
B0100-0552	B0200-0552	9" (225mm)
B0100-0553	B0200-0553	12" (300mm)



4 International Drive
Rye Brook, NY 10573
Toll Free: 1 888.764.7681
Phone: 914.934.2075
Fax: 914.934.2190
MonoSystems.com



MonoSystems™
wire management. managed.™

Cable Tray / Center Spine BOX00-069X



FILE: E80034
VOL.3

MonoTray™ Accessories

Manufactured in the USA by MonoSystems, Inc.



BOTTOM RUNG QUICK CROSS MONO-TRAY

ORDERING DATA EXAMPLE:

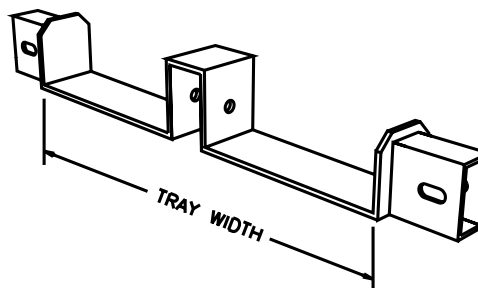
B0 X 00-069 X

MATERIAL

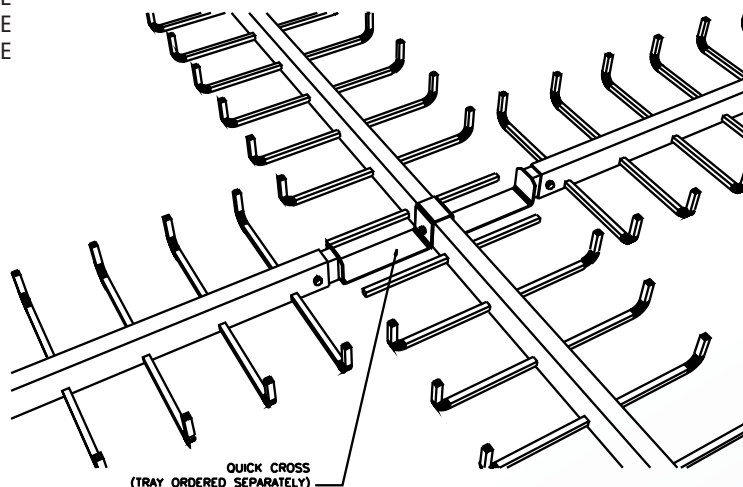
- 1 = ALUMINUM TRAY
- 2 = STEEL TRAY

TRAY WIDTH

- 1 = 6" WIDE
- 2 = 9" WIDE
- 3 = 12" WIDE
- 4 = 18" WIDE
- 5 = 24" WIDE



3/8" HARDWARE PROVIDED



ALUMINUM TRAY P/N	STEEL TRAY P/N	PART WIDTH 'w'
B0100-0691	B0200-0691	6" (150mm)
B0100-0692	B0200-0692	9" (225mm)
B0100-0693	B0200-0693	12" (300mm)
B0100-0694	B0200-0694	18" (450mm)
B0100-0695	B0200-0695	24" (600mm)

	WALL RACK		MONO TRAY	
TRAY WIDTH	ALUMINUM TRAY P/N	STEEL TRAY P/N	ALUMINUM TRAY P/N	STEEL TRAY P/N
3	B0100-0697	B0200-0697		
6	B0100-0691	B0200-0691	B0100-0691	B0200-0691
9	B0100-0692	B0200-0692	B0100-0692	B0200-0692
12	B0100-0693	B0200-0693	B0100-0693	B0200-0693
18			B0100-0694	B0200-0694
24			B0100-0695	B0200-0695
30				
36				

QUICKLY CREATES A 90° HORIZONTAL CROSS. MAY BE USED WITH TOP OR BOTTOM RUNG TRAY OF ALL HEIGHTS FOR USE WITH MONO-TRAY, AND WALL RACK CABLE TRAY. NOT TO BE USED WITH DUAL-RAIL TRAY. CROSSES ARE ACCOMPLISHED BY UTILIZING QUICK TEES. FOR STEEL TRAY UTILIZE BOTTOM RUNG TEES FOR BOTH TOP AND BOTTOM RUNG APPLICATIONS.

4 International Drive
Rye Brook, NY 10573
Toll Free: 1 888.764.7681
Phone: 914.934.2075
Fax: 914.934.2190
MonoSystems.com



MonoSystems™
wire management. managed.™

Cable Tray / Center Spine 5X0X-03XX

MonoTray™ Accessories

Manufactured in the USA by MonoSystems, Inc.



MONO-TRAY SOLID BOTTOM INSERT FOR TOP RUNG

Notes:

- 1.) Attachment hardware by others.
- 2.) Tray ordered separately.
- 3.) Views for reference only.

ORDERING DATA EXAMPLE:

5X0X-03XX

MATERIAL

1 = ALUMINUM
2 = PRE-GALVANIZED
G90 STEEL

TRAY HEIGHT

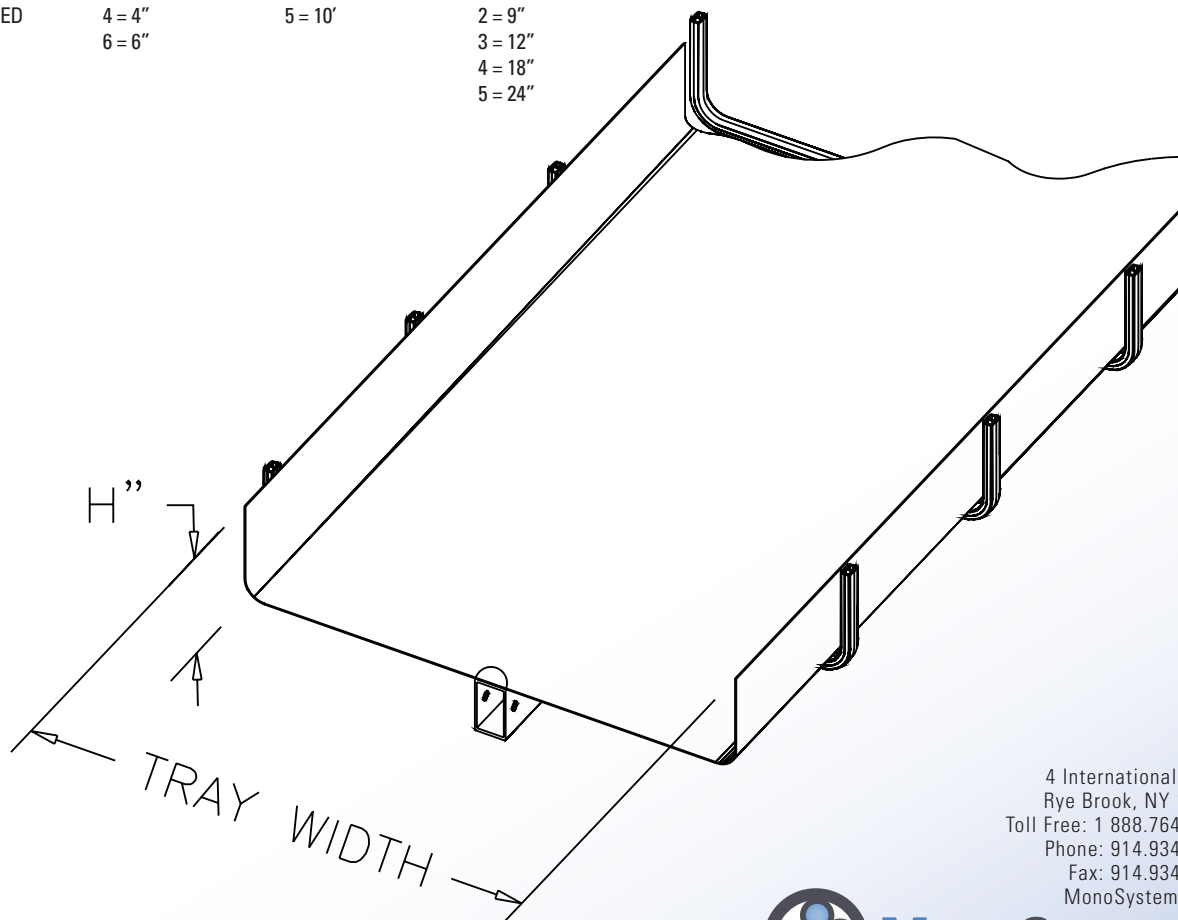
3 = 3"
4 = 4"
6 = 6"

INSERT LENGTH

2 = 12'
5 = 10'

TRAY WIDTH

1 = 6"
2 = 9"
3 = 12"
4 = 18"
5 = 24"



4 International Drive
Rye Brook, NY 10573
Toll Free: 1 888.764.7681
Phone: 914.934.2075
Fax: 914.934.2190
MonoSystems.com



MonoSystems™
Expect. Direct.

Cable Tray / Center Spine B5X0X-03XX-DR

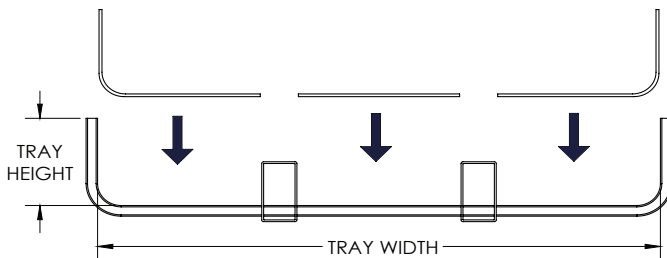
MonoTray™ Accessories
Manufactured in the USA by MonoSystems, Inc.



DUAL-RAIL STYLE SOLID BOTTOM INSERTS FOR BOTTOM RUNG

Notes:

- 1.) Attachment hardware by others.
- 2.) Tray ordered separately.
- 3.) 3-Inserts per length section as shown.
- 4.) Views for reference - Do not scale.



ORDERING DATA EXAMPLE:

B5X0X-03XX-DR

MATERIAL

1 = ALUMINUM
2 = PRE-GALVANIZED
G90 STEEL

TRAY HEIGHT

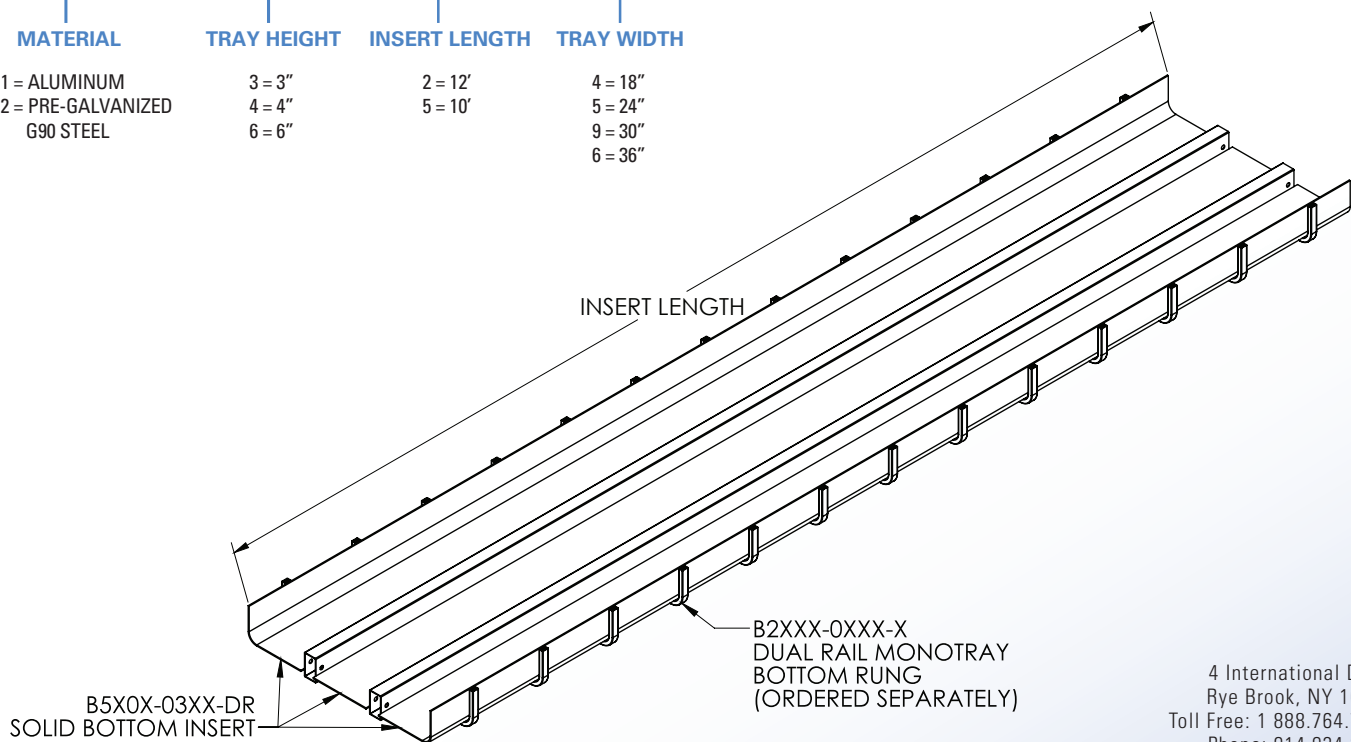
3 = 3"
4 = 4"
6 = 6"

INSERT LENGTH

2 = 12'
5 = 10'

TRAY WIDTH

4 = 18"
5 = 24"
9 = 30"
6 = 36"



4 International Drive
Rye Brook, NY 10573
Toll Free: 1 888.764.7681
Phone: 914.934.2075
Fax: 914.934.2190
MonoSystems.com



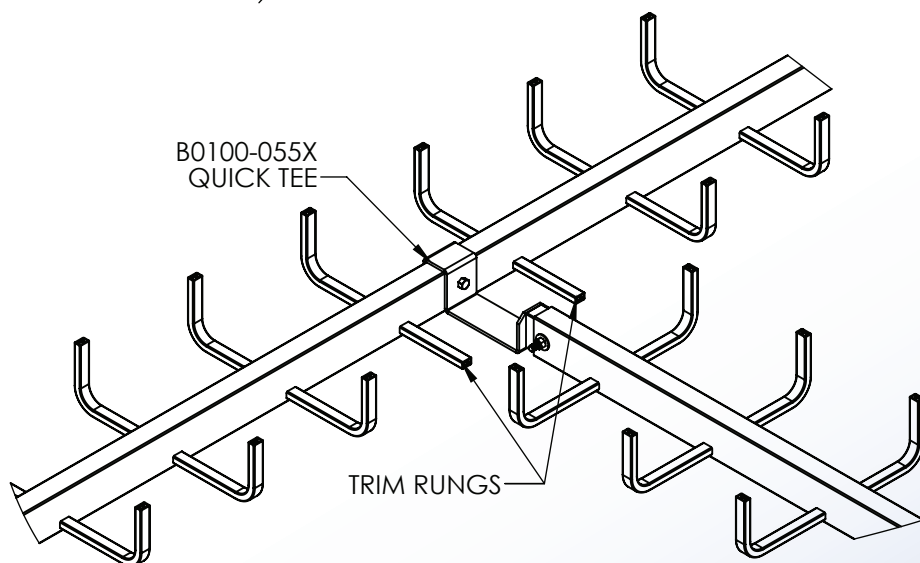
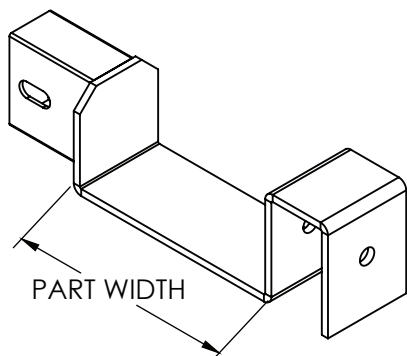
Cable Tray / Center Spine B0100-055X



FILE: E80034
VOL.3

PART NUMBER	PART WIDTH
B0100-0557	3"
B0100-0550	4.5"
B0100-0551	6"
B0100-0552	9"
B0100-0553	12"

BOTTOM RUNG ALUMINUM HORIZONTAL QUICK TEE SELECTOR			
TRAY WIDTH	WALL RACK	MONOTRAY	DUAL RAIL
3"	B0100-0557		
6"	B0100-0551	B0100-0557	
9"	B0100-0552	B0100-0550	
12"	B0100-0553	B0100-0551	
18"		B0100-0552	B0100-0550
24"		B0100-0553	B0100-0551
30"			B0100-0551
36"			B0100-0552



MonoTray™ Accessories

Manufactured in the USA by MonoSystems, Inc.



ALUMINIUM HORIZONTAL QUICK TEE BOTTOM RUNG

Notes

- 1.) Quickly creates a 90 right angle tee or elbow.
- 2.) Quick tee material: 3/16" aluminum.
Load: 150lb capacity.
Minimum support distance is 6'.
- 3.) Includes 3/8"-16 x 2-1/2" hex bolt, washer and hex nut mounting hardware.
- 4.) Views for reference - do not scale.

INSTALLATION INSTRUCTIONS

- 1.) Test fit to desired location. Measure and trim flush any rungs interfering with cable path.
- 2.) If not using solid bottom insert, be sure to deburr all sharp edges or use 0800-071X-XX rung caps (ordered separately) to cover cut rungs and protect cabling.
- 3.) Place B0100-055X quick tee coupling where center of tee or elbow will connect.

4 International Drive
Rye Brook, NY 10573
Toll Free: 1 888.764.7681
Phone: 914.934.2075
Fax: 914.934.2190
MonoSystems.com



MonoSystems™
wire management. managed.™

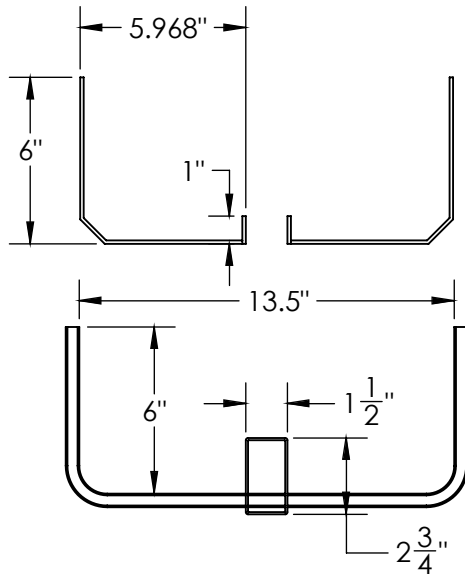
Cable Tray / Center Spine EB6806-035-12-GCL

MonoTray™ Accessories

Manufactured in the USA by MonoSystems, Inc.



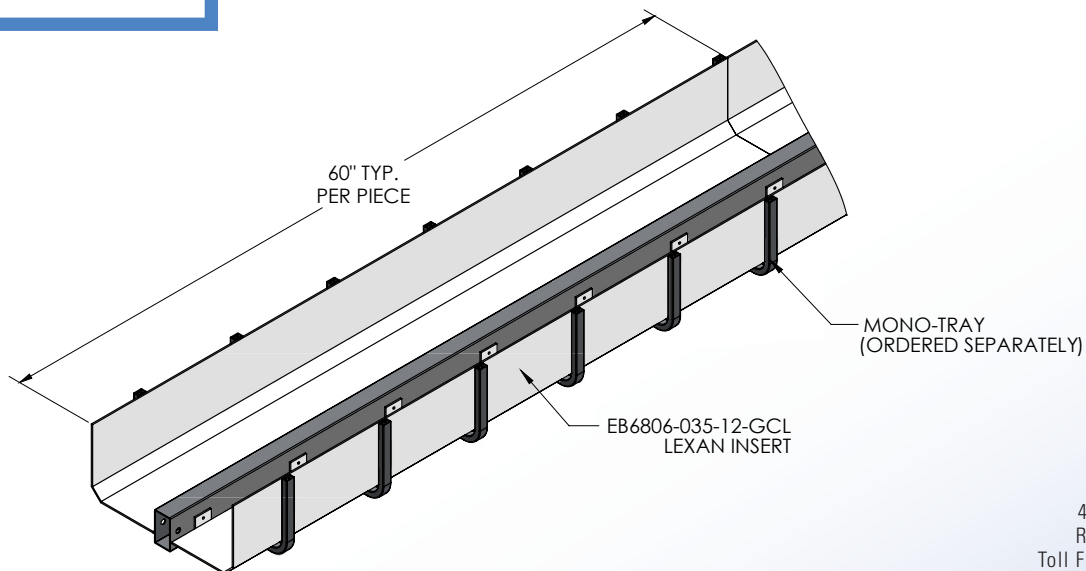
LEXAN INSERT FOR 6"H, 12"W, BOTTOM RUNG ALUMINIUM MONO-TRAY



EXPLODED FRONT VIEW

Notes

- 1.) Ordered as sets. Includes mounting hardware.
- 2.) Material: 1/8" thick clear smoke gray lexan.
- 3.) Views for reference - do not scale.



4 International Drive
Rye Brook, NY 10573
Toll Free: 1 888.764.7681
Phone: 914.934.2075
Fax: 914.934.2190
MonoSystems.com



MonoSystems™
wire management. managed.™

Center Spine X010X-045X



FILE: E80034
VOL.3

MonoTray™ Accessories

Manufactured in the USA by MonoSystems, Inc.



MONO-TRAY TRAY TO BOX CONNECTOR

ORDERING DATA EXAMPLE:

X0X0X-045X

TRAY STYLE

BLANK = TOP RUNG
B = BOTTOM RUNG

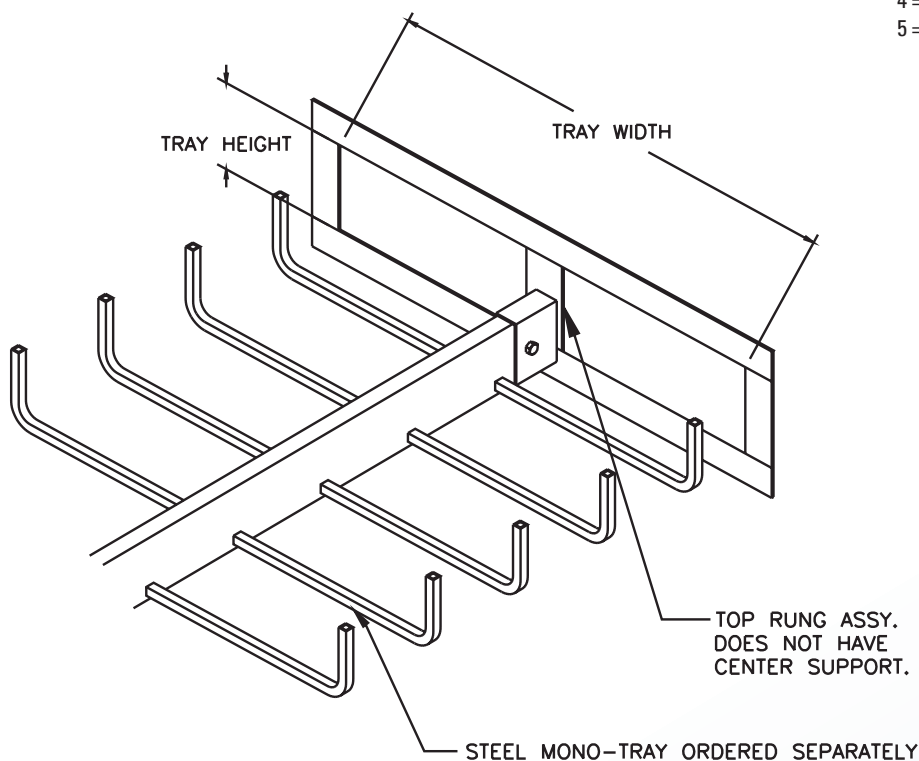
1 = ALUMINUM TRAY
2 = STEEL TRAY

RUNG HEIGHT

3 = 3" HIGH
4 = 4" HIGH
6 = 6" HIGH

TRAY WIDTH

1 = 6" WIDE
2 = 9" WIDE
3 = 12" WIDE
4 = 18" WIDE
5 = 24" WIDE



MONO TRAY TRAY TO BOX CONNECTOR				
TRAY WIDTH	TOP RUNG ALUMINUM TRAY PART NO.	TOP RUNG STEEL TRAY PART NO.	BOTTOM RUNG ALUMINUM TRAY PART NO.	BOTTOM RUNG STEEL TRAY PART NO.
6	0103-0451	0203-0451	B0103-0451	B0203-0451
9	0103-0452	0203-0452	B0103-0452	B0203-0452
12	0103-0453	0203-0453	B0103-0453	B0203-0453
18	0103-0454	0203-0454	B0103-0454	B0203-0454
24	0103-0455	0203-0455	B0103-0455	B0203-0455

CHANGE 4TH DIGIT OF PART NUMBER TO 4 FOR 4" (100mm) RUNG HEIGHT.
CHANGE 4TH DIGIT OF PART NUMBER TO 6 FOR 6" (150mm) RUNG HEIGHT.

4 International Drive
Rye Brook, NY 10573
Toll Free: 1 888.764.7681
Phone: 914.934.2075
Fax: 914.934.2190
MonoSystems.com



MonoSystems™
wire management. managed.™

Cable Tray/Center Spine X4X00-03XX

MonoTray™ Accessories
Manufactured in the USA by MonoSystems, Inc.



30 DEGREE PEAKED MONO-TRAY COVER

ORDERING DATA EXAMPLE:

X 4 X 00-03 X X

TRAY STYLE

BLANK = TOP RUNG 1 = ALUMINUM TRAY
B = BOTTOM RUNG 2 = STEEL TRAY

COVER LENGTH

2 = 12'
5 = 10'

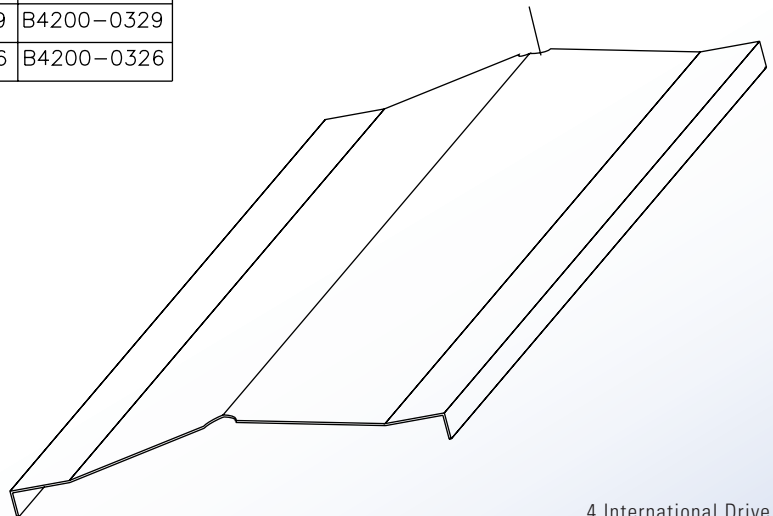
TRAY WIDTH

1 = 6" WIDE
2 = 9" WIDE
3 = 12" WIDE
4 = 18" WIDE
5 = 24" WIDE
6 = 36" WIDE
9 = 30" WIDE

ALL ALUMINUM TRAY COVERS SHOWN ARE MADE OF ALUMINUM.
ALL STEEL COVERS SHOWN ARE MADE OF GALVANIZED STEEL.

30 DEGREE PEAKED COVER				
TRAY WIDTH	TOP RUNG ALUMINUM TRAY PART NO.	TOP RUNG STEEL TRAY PART NO.	BOTTOM RUNG ALUMINUM TRAY PART NO.	BOTTOM RUNG STEEL TRAY PART NO.
6	4100-0321	4200-0321	B4100-0321	B4200-0321
9	4100-0322	4200-0322	B4100-0322	B4200-0322
12	4100-0323	4200-0323	B4100-0323	B4200-0323
18	4100-0324	4200-0324	B4100-0324	B4200-0324
24	4100-0325	4200-0325	B4100-0325	B4200-0325
30	4100-0329	4200-0329	B4100-0329	B4200-0329
36	4100-0326	4200-0326	B4100-0326	B4200-0326

NOTCH SLIPS BETWEEN WASHER AND NUT FOR EASY INSTALLATION.



STANDARD 12'-0" (3.6mm) LENGTH. CANADIAN ORDERS (3M LENGTH)
CHANGE 7TH DIGIT OF PART NUMBER TO 5 FOR (3M LENGTH)



4 International Drive
Rye Brook, NY 10573
Toll Free: 1 888.764.7681
Phone: 914.934.2075
Fax: 914.934.2190
MonoSystems.com

MonoSystems™
wire management. managed.™

Cable Tray / Center Spine 3X00-03XX-SING

MonoTray™ Accessories

Manufactured in the USA by MonoSystems, Inc.



FILE: E80034
VOL.3

MONO-TRAY SINGLE RAIL SOLID COVER

ORDERING DATA EXAMPLE:

X3X0X-03XX

RUNG STYLE

BLANK = TOP RUNG
B = BOTTOM RUNG

1 = ALUMINUM TRAY
2 = STEEL TRAY

RUNG HEIGHT

3 = 3" HIGH
4 = 4" HIGH
6 = 6" HIGH

TRAY WIDTH

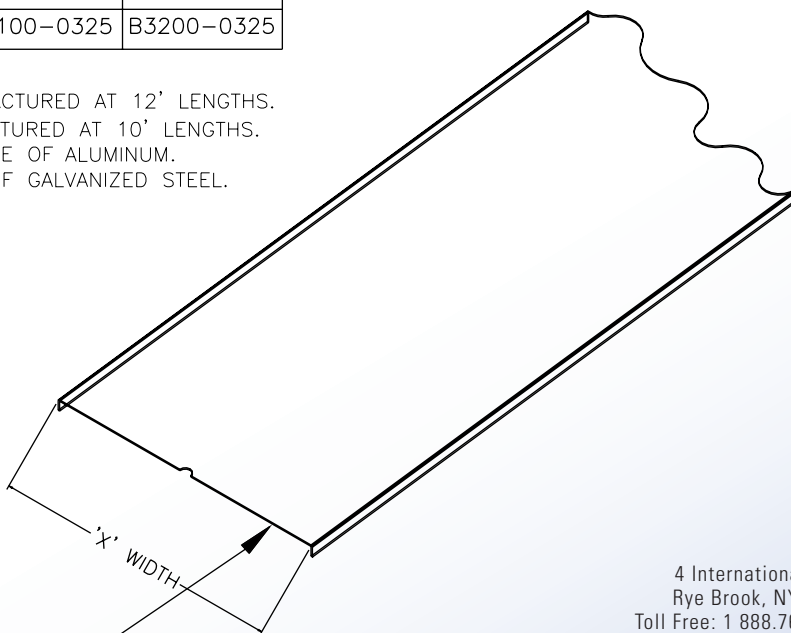
4 = 18" WIDE
5 = 24" WIDE
6 = 36" WIDE
9 = 30" WIDE

COVER LENGTH

2 = 12'
5 = 10'

MONO-TRAY SOLID COVER				
TRAY WIDTH	TOP RUNG ALUMINUM TRAY PART NO.	TOP RUNG STEEL TRAY PART NO.	BOTTOM RUNG ALUMINUM TRAY PART NO.	BOTTOM RUNG STEEL TRAY PART NO.
6	3100-0321	3200-0321	B3100-0321	B3200-0321
9	3100-0322	3200-0322	B3100-0322	B3200-0322
12	3100-0323	3200-0323	B3100-0323	B3200-0323
18	3100-0324	3200-0324	B3100-0324	B3200-0324
24	3100-0325	3200-0325	B3100-0325	B3200-0325

SECTIONS UP TO 12" WIDE ARE MANUFACTURED AT 12' LENGTHS.
SECTIONS OVER 12" WIDE ARE MANUFACTURED AT 10' LENGTHS.
ALL ALUMINUM COVERS SHOWN ARE MADE OF ALUMINUM.
ALL STEEL COVERS SHOWN ARE MADE OF GALVANIZED STEEL.



NOTCH SLIPS BETWEEN WASHER
AND NUT FOR EASY INSTALLATION.



4 International Drive
Rye Brook, NY 10573
Toll Free: 1 888.764.7681
Phone: 914.934.2075
Fax: 914.934.2190
MonoSystems.com

MonoSystems™
wire management. managed.

Cable Tray / Center Spine X3X0X-03XX

MonoTray™ Accessories
Manufactured in the USA by MonoSystems, Inc.



DUAL-RAIL MONO-TRAY COVER

ORDERING DATA EXAMPLE:

X 3 X 0 X - 03 X X

RUNG STYLE

BLANK = TOP RUNG 1 = ALUMINUM TRAY
B = BOTTOM RUNG 2 = STEEL TRAY

RUNG HEIGHT

3 = 3" HIGH
4 = 4" HIGH
6 = 6" HIGH

TRAY WIDTH

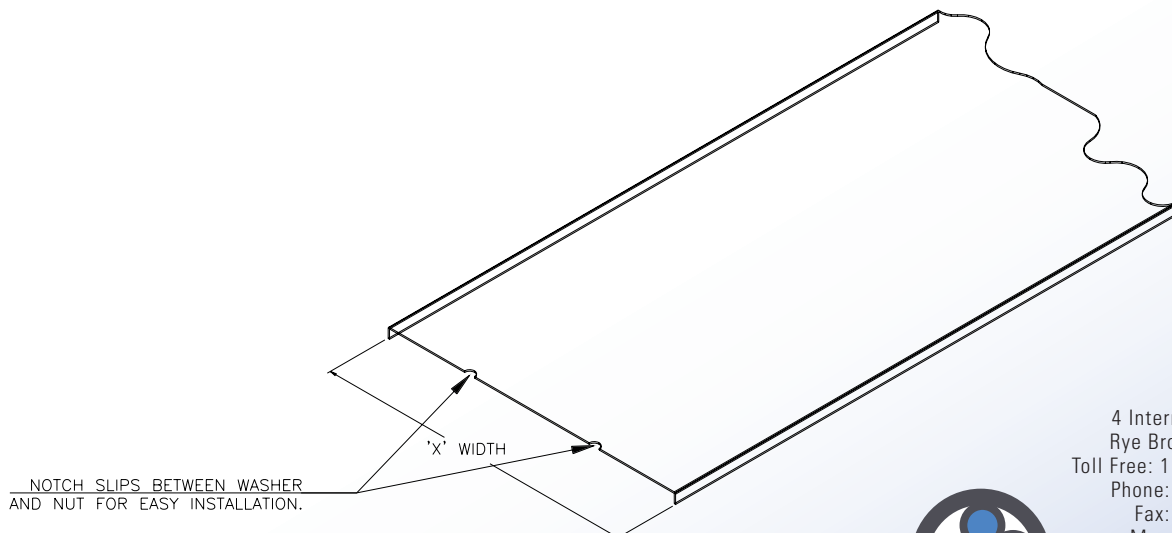
4 = 18" WIDE
5 = 24" WIDE
6 = 36" WIDE
9 = 30" WIDE

COVER LENGTH

2 = 12'
5 = 10'

TRAY WIDTH	TOP RUNG ALUMINUM TRAY PART NO.	TOP RUNG STEEL TRAY PART NO.	BOTTOM RUNG ALUMINUM TRAY PART NO.	BOTTOM RUNG STEEL TRAY PART NO.
18	3100-0324	3200-0324	B3100-0324	B3200-0324
24	3100-0325	3200-0325	B3100-0325	B3200-0325
30	3100-0329	3200-0329	B3100-0329	B3200-0329
36	3100-0326	3200-0326	B3100-0326	B3200-0326

SECTIONS UP TO 12" WIDE ARE MANUFACTURED AT 12' LENGTHS.
SECTIONS OVER 12" WIDE ARE MANUFACTURED AT 10' LENGTHS.
ALL ALUMINUM COVERS SHOWN ARE MADE OF ALUMINUM.
ALL STEEL COVERS SHOWN ARE MADE OF GALVANIZED STEEL.



4 International Drive
Rye Brook, NY 10573
Toll Free: 1 888.764.7681
Phone: 914.934.2075
Fax: 914.934.2190
MonoSystems.com



MonoSystems™
wire management. managed.

Cable Tray / Center Spine X2X0X-040X

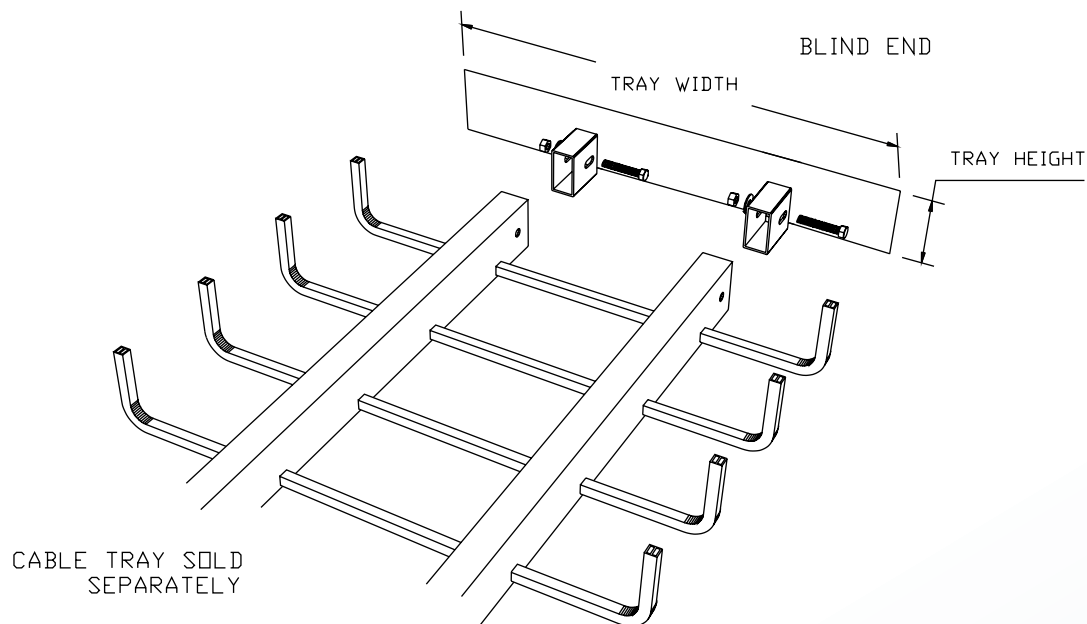
MonoTray™ Accessories
Manufactured in the USA by MonoSystems, Inc.



DUAL-RAIL BLIND END

	MONO TRAY DUAL RAIL BLIND END			
TRAY WIDTH	TOP RUNG ALUMINUM TRAY PART NO.	TOP RUNG STEEL TRAY PART NO.	BOTTOM RUNG ALUMINUM TRAY PART NO.	BOTTOM RUNG STEEL TRAY PART NO.
18	2103-0404	2203-0404	B2103-0404	B2203-0404
24	2103-0405	2203-0405	B2103-0405	B2203-0405
30	2103-0409	2203-0409	B2103-0409	B2203-0409
36	2103-0406	2203-0406	B2103-0406	B2203-0406

CHANGE 4TH DIGIT OF PART NUMBER TO 4 FOR 4" (100mm) RUNG HEIGHT.
CHANGE 4TH DIGIT OF PART NUMBER TO 6 FOR 6" (150mm) RUNG HEIGHT.



ORDERING DATA EXAMPLE:

X2X0X-040X

RUNG STYLE

BLANK = TOP RUNG
B = BOTTOM RUNG

RUNG HEIGHT

1 = ALUMINUM TRAY
2 = STEEL TRAY

3 = 3" HIGH
4 = 4" HIGH
6 = 6" HIGH

TRAY WIDTH

4 = 18" WIDE
5 = 24" WIDE
6 = 36" WIDE
9 = 30" WIDE

4 International Drive
Rye Brook, NY 10573
Toll Free: 1 888.764.7681
Phone: 914.934.2075
Fax: 914.934.2190
MonoSystems.com



MonoSystems™
wire management. managed.™

Cable Tray / Center Spine X0X03-040X

MonoTray™ Accessories

Manufactured in the USA by MonoSystems, Inc.

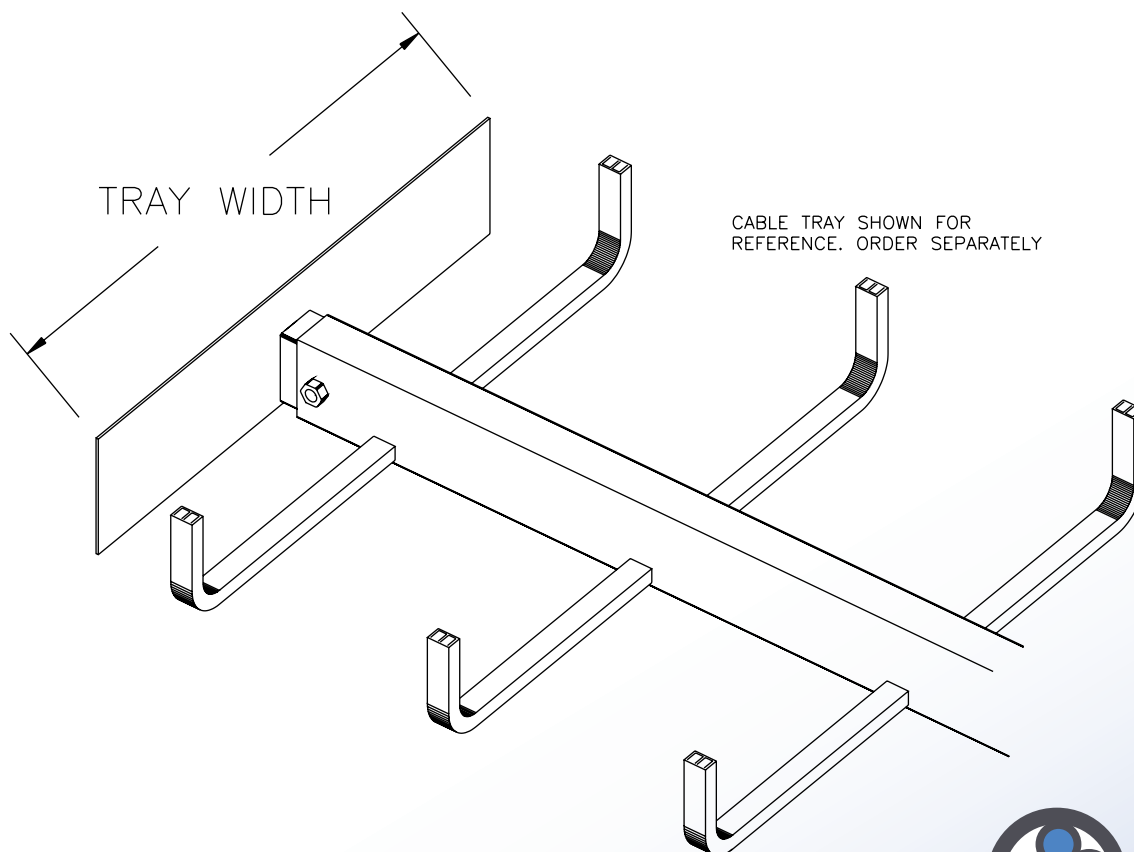


FILE: E80034
VOL.3

MONO-TRAY BLIND END FITTING

TRAY WIDTH	MONO TRAY BLIND END			
	TOP RUNG ALUMINUM TRAY PART NO.	TOP RUNG STEEL TRAY PART NO.	BOTTOM RUNG ALUMINUM TRAY PART NO.	BOTTOM RUNG STEEL TRAY PART NO.
6	0103-0401	0203-0401	B0103-0401	B0203-0401
9	0103-0402	0203-0402	B0103-0402	B0203-0402
12	0103-0403	0203-0403	B0103-0403	B0203-0403
18	0103-0404	0203-0404	B0103-0404	B0203-0404
24	0103-0405	0203-0405	B0103-0405	B0203-0405

CHANGE 4TH DIGIT OF PART NUMBER TO 4 FOR 4" (100mm) RUNG HEIGHT.
CHANGE 4TH DIGIT OF PART NUMBER TO 6 FOR 6" (150mm) RUNG HEIGHT.



4 International Drive
Rye Brook, NY 10573
Toll Free: 1 888.764.7681
Phone: 914.934.2075
Fax: 914.934.2190
MonoSystems.com



MonoSystems™
wire management. managed.™

Cable Tray / Center Spine X0X0X-045X-LH-RH

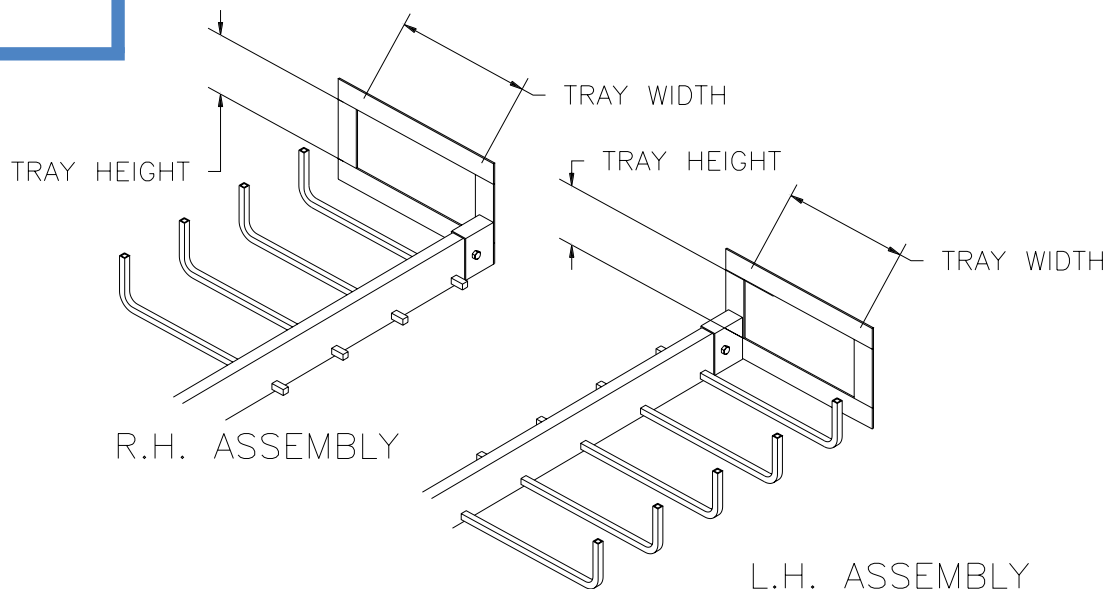
MonoTray™ Accessories

Manufactured in the USA by MonoSystems, Inc.



FILE: E80034
VOL.3

WALL RACK TRAY TO BOX CONNECTOR



ORDERING DATA EXAMPLE:

X0X0X-045X-LH-RH

RUNG STYLE

RUNG HEIGHT

TRAY WIDTH

BLANK = TOP RUNG
B = BOTTOM RUNG

1 = ALUMINUM TRAY
2 = STEEL TRAY

3 = 3" HIGH
4 = 4" HIGH
6 = 6" HIGH

1 = 6" WIDE
2 = 9" WIDE
3 = 12" WIDE
4 = 18" WIDE
5 = 24" WIDE

FOR WALL RACK & WALL RACK DOUBLE-TIER
ADD -LH OR -RH SUFFIX TO PART NUMBER FOR
LEFT HAND OR RIGHT HAND CONFIGURATION

WALL RACK TRAY TO BOX CONNECTOR, LH & RH				
TRAY WIDTH	TOP RUNG ALUMINUM TRAY PART NO.	TOP RUNG STEEL TRAY PART NO.	BOTTOM RUNG ALUMINUM TRAY PART NO.	BOTTOM RUNG STEEL TRAY PART NO.
6	0103-0451	0203-0451	B0103-0451	B0203-0451
9	0103-0452	0203-0452	B0103-0452	B0203-0452
12	0103-0453	0203-0453	B0103-0453	B0203-0453
18	0103-0454	0203-0454	B0103-0454	B0203-0454
24	0103-0455	0203-0455	B0103-0455	B0203-0455

CHANGE 4TH DIGIT OF PART NUMBER TO 4 FOR 4" (100mm) RUNG HEIGHT.
CHANGE 4TH DIGIT OF PART NUMBER TO 6 FOR 6" (150mm) RUNG HEIGHT.

4 International Drive
Rye Brook, NY 10573
Toll Free: 1 888.764.7681
Phone: 914.934.2075
Fax: 914.934.2190
MonoSystems.com



MonoSystems™
wire management. managed.™

Cable Tray / Center Spine X0X0X-045X

MonoTray™ Accessories

Manufactured in the USA by MonoSystems, Inc.

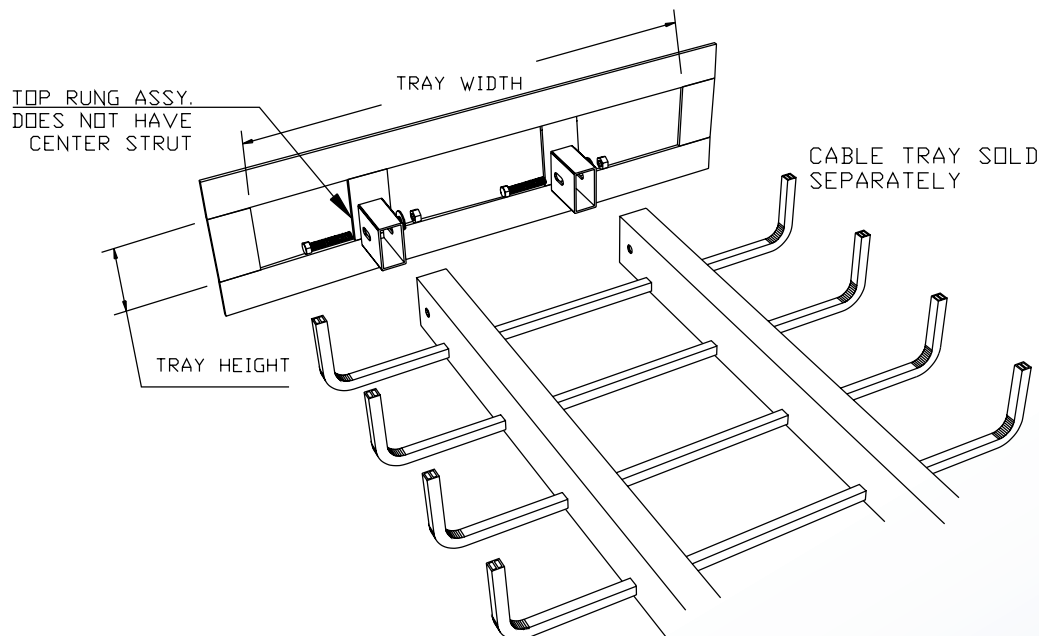


FILE: E80034
VOL.3

DUAL-RAIL TRAY TO BOX CONNECTOR

MONO TRAY DUAL RAIL TRAY TO BOX CONNECTOR				
TRAY WIDTH	TOP RUNG ALUMINUM TRAY PART NO.	TOP RUNG STEEL TRAY PART NO.	BOTTOM RUNG ALUMINUM TRAY PART NO.	BOTTOM RUNG STEEL TRAY PART NO.
18	2103-0454	2203-0454	B2103-0454	B2203-0454
24	2103-0455	2203-0455	B2103-0455	B2203-0455
30	2103-0459	2203-0459	B2103-0459	B2203-0459
36	2103-0456	2203-0456	B2103-0456	B2203-0456

CHANGE 4TH DIGIT OF PART NUMBER TO 4 FOR 4" (100mm) RUNG HEIGHT.
CHANGE 4TH DIGIT OF PART NUMBER TO 6 FOR 6" (150mm) RUNG HEIGHT.



ORDERING DATA EXAMPLE:

X0X0X-045X

RUNG STYLE

BLANK = TOP RUNG
B = BOTTOM RUNG

1 = ALUMINUM TRAY
2 = STEEL TRAY

RUNG HEIGHT

3 = 3" HIGH
4 = 4" HIGH
6 = 6" HIGH

TRAY WIDTH

4 = 18" WIDE
5 = 24" WIDE
6 = 36" WIDE
9 = 30" WIDE

4 International Drive
Rye Brook, NY 10573
Toll Free: 1 888.764.7681
Phone: 914.934.2075
Fax: 914.934.2190
MonoSystems.com



MonoSystems™
wire management. managed.™

Cable Tray/Center Spine QT-QC12W

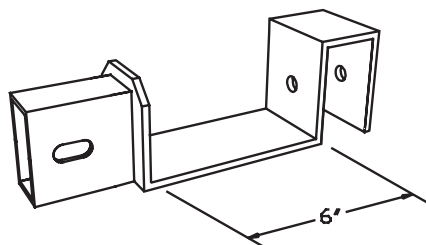
MonoTray™

Manufactured in the USA by MonoSystems, Inc.

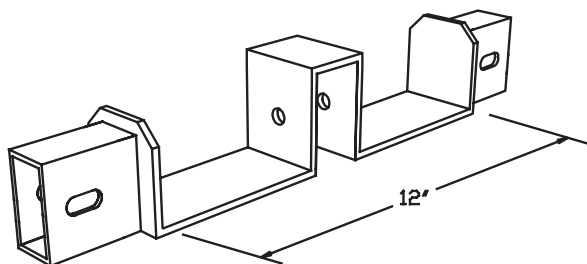


FILE: E80034
VOL.3

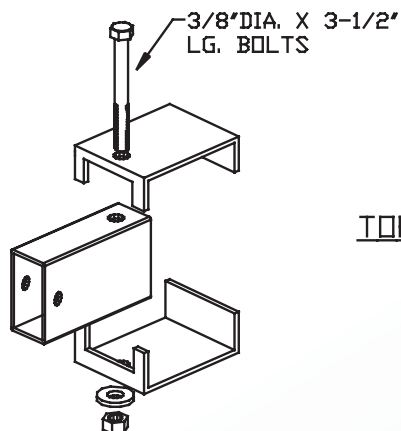
QUICK TEES & CROSSES FOR 12" WIDE MONO-TRAY



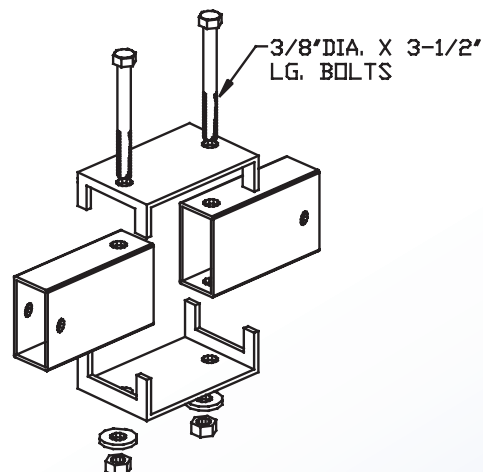
BOTTOM RUNG QUICK TEE (B0100-0553)



BOTTOM RUNG QUICK CROSS (B0100-0693)



TOP RUNG HORIZONTAL QUICK TEE (0100-0553)



TOP RUNG HORIZONTAL QUICK CROSS (0100-0693)

4 International Drive
Rye Brook, NY 10573
Toll Free: 1 888.764.7681
Phone: 914.934.2075
Fax: 914.934.2190
MonoSystems.com



MonoSystems™
wire management. managed.™

Cable Tray / Center Spine MTDB-431

MonoTray™ Accessories
Manufactured in the USA by MonoSystems, Inc.



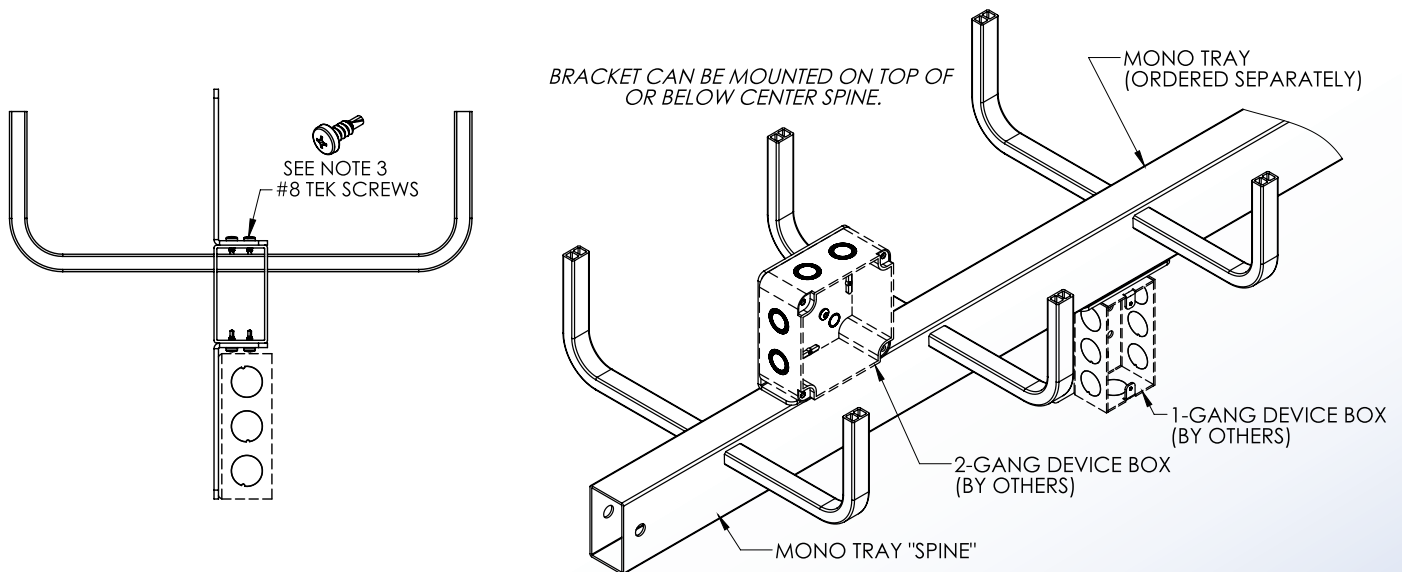
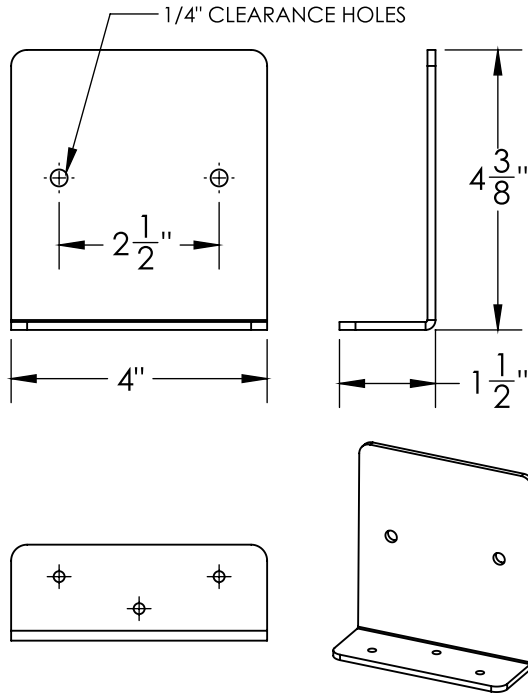
MOUNTING BRACKET, DEVICE BOX TO MONO TRAY

Notes

- 1.) Ordered as each.
- 2.) Bracket material: 1/8" thick aluminum.
- 3.) Device box and device box mounting hardware by others.
- 4.) Use to mount 1-gang or 2-gang device box to mono tray.
- 5.) Views for reference - do not scale.

Installation Instructions

- 1.) Position bracket centered on top of or below spine in desired location.
- 2.) Install (3) provided #8 tek screws thru pilot holes into spine
- 3.) Attach device box to bracket using 1/4" hardware. Use existing mounting holes or field drill new holes as required.



4 International Drive
Rye Brook, NY 10573
Toll Free: 1 888.764.7681
Phone: 914.934.2075
Fax: 914.934.2190
MonoSystems.com



MonoSystems™
wire management. managed.™

Cable Tray / Center Spine 0200-0610-X

MonoTray™ Accessories

Manufactured in the USA by MonoSystems, Inc.



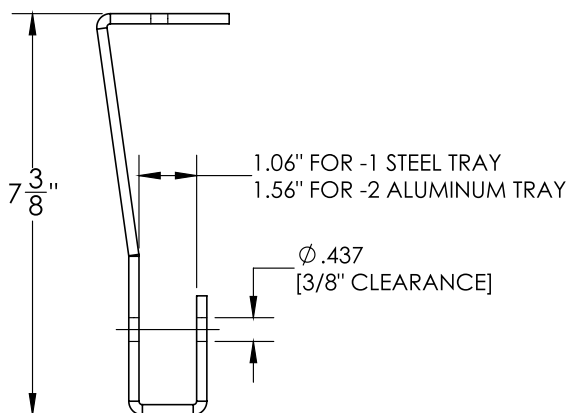
"J" HANGER BRACKET

Notes

- 1.) Ordered as each.
- 2.) Bracket material: 3/16" H.R.S. plated finish.
- 3.) Use to support tray at any point along a horizontal run.
- 4.) Tray ordered separately, threaded rod, and threaded rod hardware by others.
- 5.) Views for reference - do not scale.

Installation Instructions

- 1.) Position bracket in desired location without interference to the rungs.
- 2.) Drill clearance hole in tray spine and install provided hardware to fasten bracket to tray.
- 3.) Securely attach threaded rod or box beam (by others) to top of bracket.

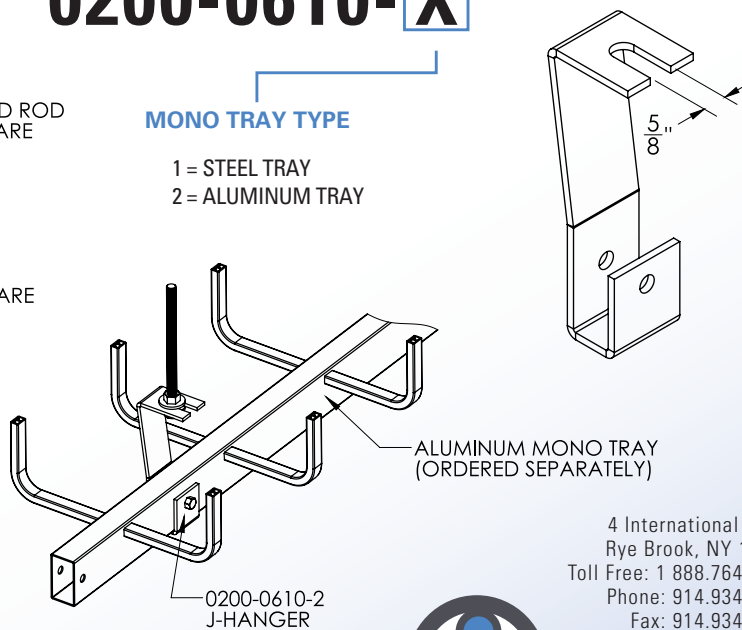
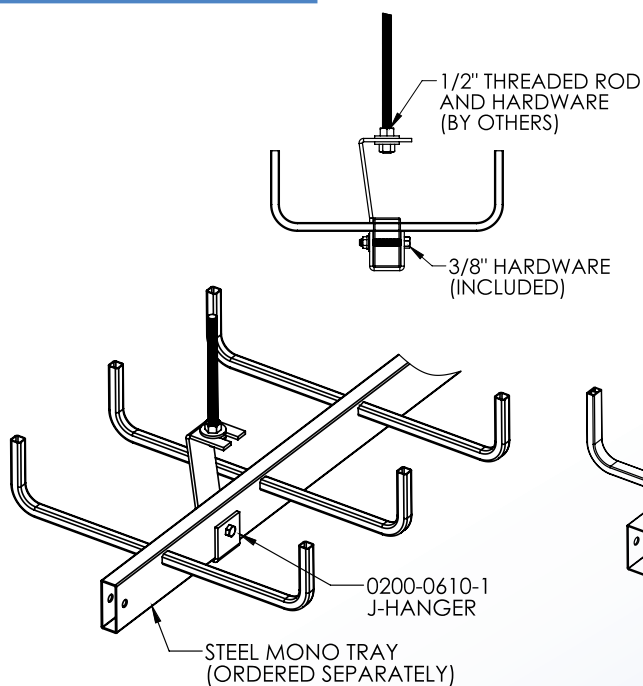


ORDERING DATA EXAMPLE:

0200-0610-X

MONO TRAY TYPE

- 1 = STEEL TRAY
2 = ALUMINUM TRAY



4 International Drive
Rye Brook, NY 10573
Toll Free: 1 888.764.7681
Phone: 914.934.2075
Fax: 914.934.2190
MonoSystems.com



MonoSystems™
wire management. managed.

Cable Tray / Center Spine B510X-032X

MonoTray™ Accessories
Manufactured in the USA by MonoSystems, Inc.



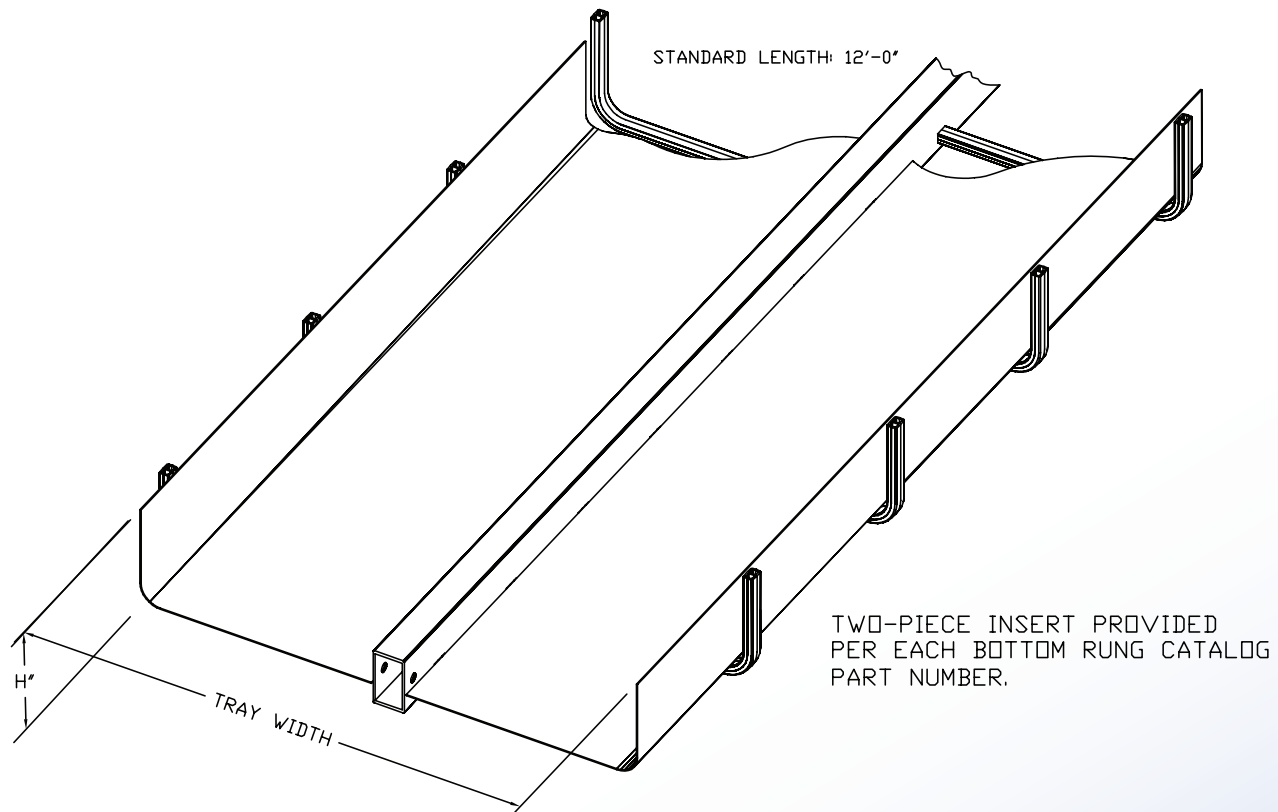
BOTTOM RUNG MONO-TRAY ALUMINUM SOLID BOTTOM INSERTS

Notes:

- 1.) Attachment hardware by others.
- 2.) Tray ordered separately.
- 3.) Materials = aluminum.
- 4.) Views for reference only.

TRAY WIDTH	CAT. NUMBER
6"	B510X-0321
9"	B510X-0322
12"	B510X-0323
18"	B510X-0324
24"	B510X-0325

* Insert "3" for 3" Tray Height
Insert "4" for 4" Tray Height
Insert "6" for 6" Tray Height



4 International Drive
Rye Brook, NY 10573
Toll Free: 1 888.764.7681
Phone: 914.934.2075
Fax: 914.934.2190
MonoSystems.com



Cable Tray / Center Spine 5X0X-03XX-DR

MonoTray™ Accessories

Manufactured in the USA by MonoSystems, Inc.



DUAL-RAIL SOLID BOTTOM INSERT FOR TOP RUNG

Notes:

- 1.) Attachment hardware by others.
- 2.) Tray ordered separately.
- 3.) Views for reference only.

ORDERING DATA EXAMPLE:

5X0X-03XX-DR

MATERIAL

1 = ALUMINUM
2 = PRE-GALVANIZED
G90 STEEL

TRAY HEIGHT

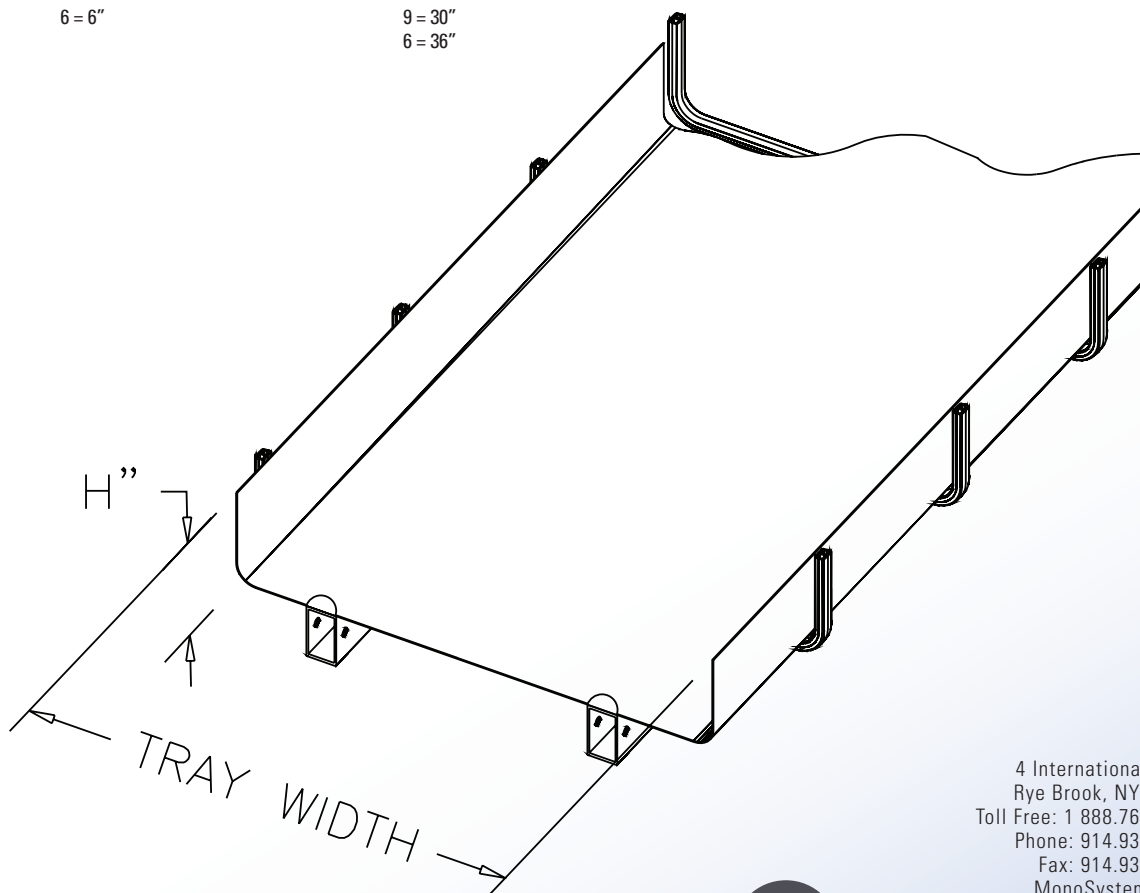
3 = 3"
4 = 4"
6 = 6"

INSERT LENGTH

2 = 12'
5 = 10'

TRAY WIDTH

4 = 18"
5 = 24"
9 = 30"
6 = 36"



4 International Drive
Rye Brook, NY 10573
Toll Free: 1 888.764.7681
Phone: 914.934.2075
Fax: 914.934.2190
MonoSystems.com



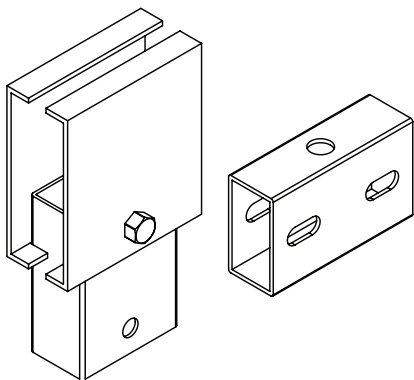
MonoSystems™
Expect. Direct.

Cable Tray / Center Spine

0X00-0640

MonoTray™ Accessories

Manufactured in the USA by MonoSystems, Inc.



VERTICAL QUICK TEE

Notes

- 1.) Ordered as each, includes (1) splice plate with hardware for connection. Tray ordered separately.
- 2.) Use to quickly create a right angle vertical tee almost anywhere along the tray length. Mount directing above or below tray.
- 3.) Create a vertical cross by using (2x) quick vertical tees.
- 4.) For use with monotray, dual rail, and wall rack. For use with dual rail specify 2x vertical tees.
- 5.) Views for reference - Do not scale.



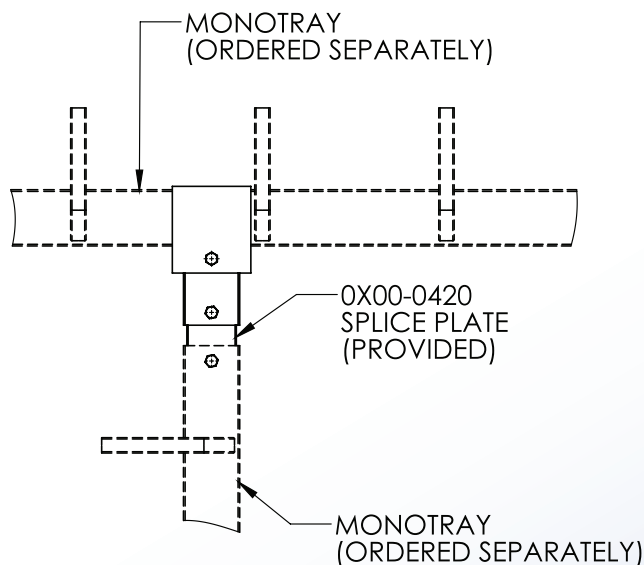
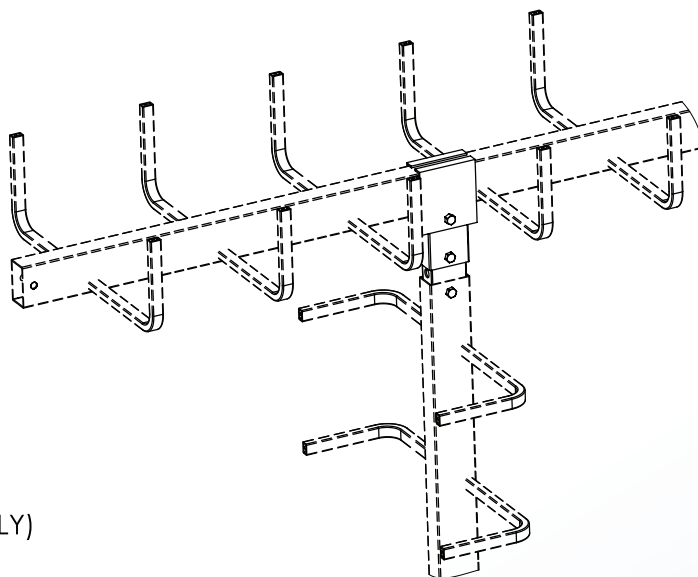
ORDERING DATA EXAMPLE:

0 X 00-0640

MATERIAL

1 = ALUMINUM TRAY

2 = STEEL TRAY



4 International Drive
Rye Brook, NY 10573
Toll Free: 1 888.764.7681
Phone: 914.934.2075
Fax: 914.934.2190
MonoSystems.com



MonoSystems™
Expect. Direct.

Cable Tray / Center Spine B5X0X-03XX

MonoTray™ Accessories
Manufactured in the USA by MonoSystems, Inc.



BOTTOM RUNG MONO-TRAY SOLID BOTTOM INSERTS

Notes:

- 1.) Attachment hardware by others.
- 2.) Tray ordered separately.
- 3.) 2-inserts per length section as shown.
- 4.) Views for reference only.

ORDERING DATA EXAMPLE:

B5X0X-03XX

MATERIAL

1 = ALUMINUM
2 = PRE-GALVANIZED
G90 STEEL

TRAY HEIGHT

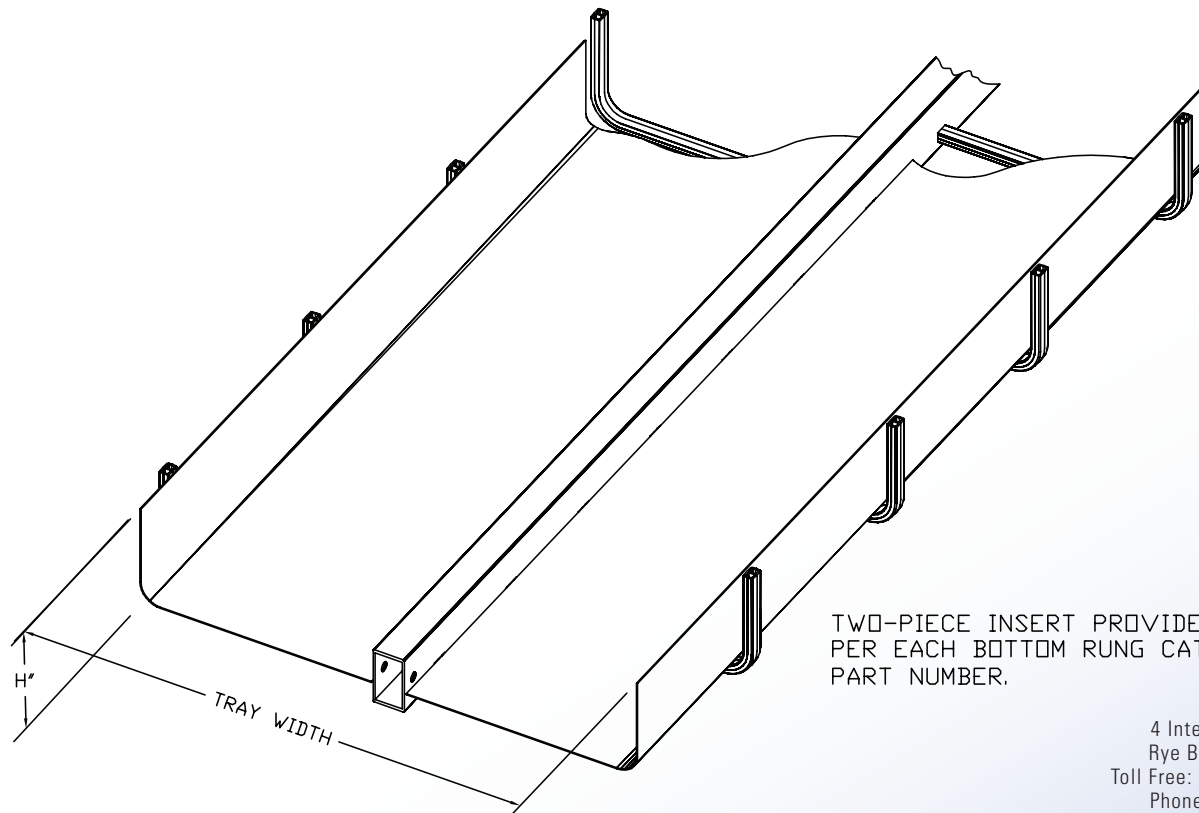
3 = 3"
4 = 4"
6 = 6"

INSERT LENGTH

2 = 12'
5 = 10'

TRAY WIDTH

1 = 6"
2 = 9"
3 = 12"
4 = 18"
5 = 24"



TWO-PIECE INSERT PROVIDED
PER EACH BOTTOM RUNG CATALOG
PART NUMBER.

4 International Drive
Rye Brook, NY 10573
Toll Free: 1 888.764.7681
Phone: 914.934.2075
Fax: 914.934.2190
MonoSystems.com



Cable Tray / Aluminum Tray

0100-0424

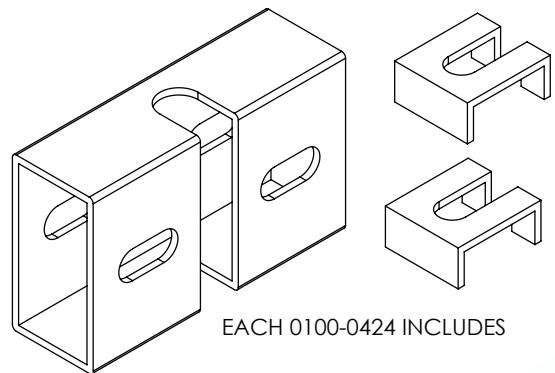
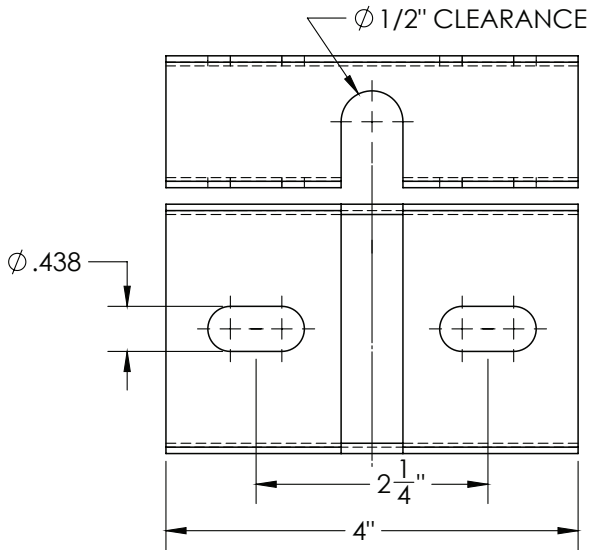
MonoTray™ Accessories

Manufactured in the USA by MonoSystems, Inc.

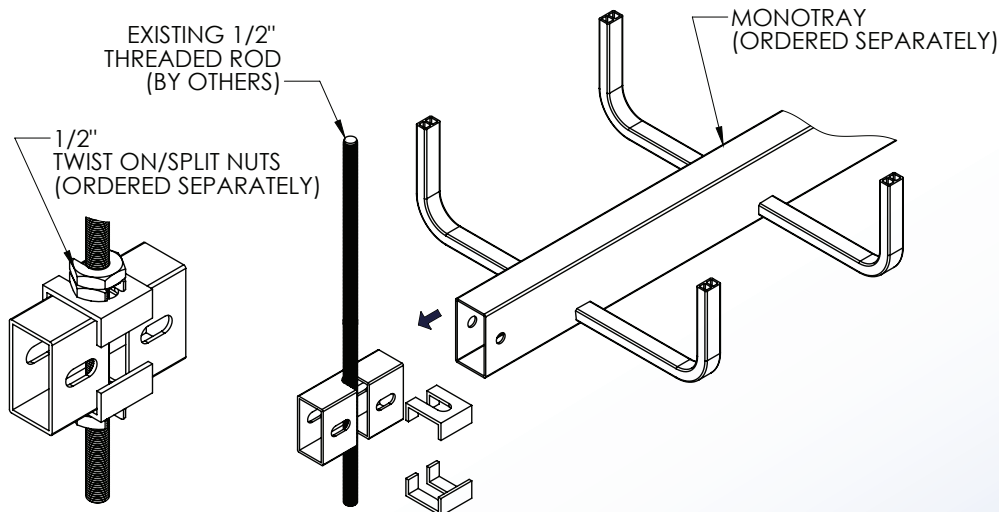
SPLIT SPLICE CONNECTOR FOR ALUMINUM TRAY

Notes:

- 1.) Ordered as each includes (1x) split splice connector & (2X) slotted clamps.
- 2.) Accepts 1/2" [12mm] hanger rod (by others).
- 3.) Use for coupling vertical runs of cable tray on existing hanger rods.
- 4.) Attach to end of tray using 3/8" x 2" hex bolt & 3/8" flat washer and nut (ordered separately)
- 5.) For use with monotrayer, dual rail, and wall rack.
- 6.) Views for reference - do not scale.



EACH 0100-0424 INCLUDES



4 International Drive
Rye Brook, NY 10573
Toll Free: 1 888.764.7681
Phone: 914.934.2075
Fax: 914.934.2190



Cable Tray / Aluminum Tray

0100-0532

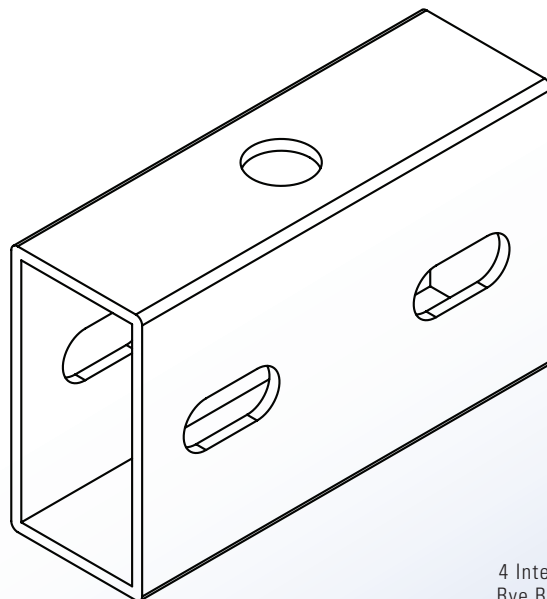
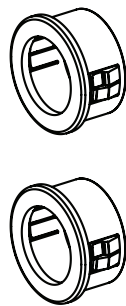
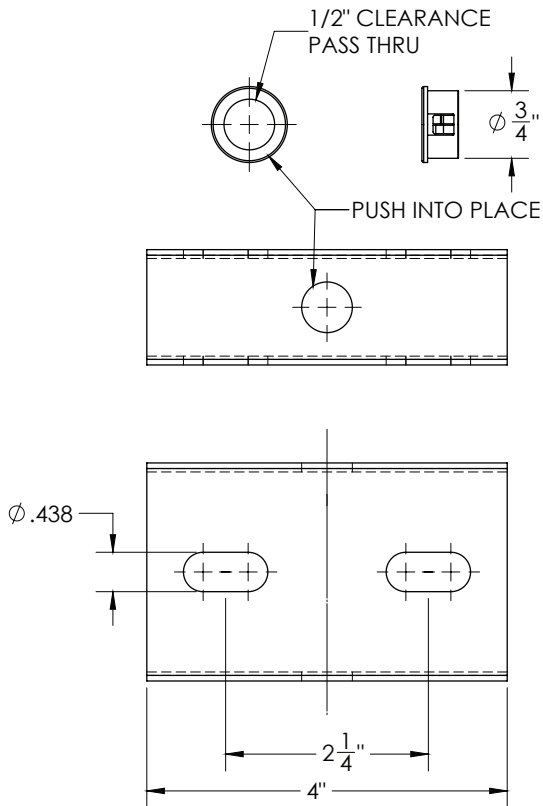
MonoTray™ Accessories

Manufactured in the USA by MonoSystems, Inc.

HOLED SPLICE CONNECTOR WITH NYLON BUSHINGS FOR ALUMINUM TRAY

Notes:

- 1.) Ordered as each includes (1x) holed splice connector & (2X) nylon bushings.
- 2.) Accepts 1/2" [12mm] hanger rod (by others).
- 3.) Use for coupling isolating cable tray system from structural steel.
- 4.) Attach to end of tray using 3/8" x 2" hex bolt & 3/8" flat washer and nut (ordered separately)
- 5.) For use with monotray, dual rail, and wall rack.
- 6.) Views for reference - do not scale.



EACH 0100-0532 INCLUDES

4 International Drive
Rye Brook, NY 10573
Toll Free: 1 888.764.7681
Phone: 914.934.2075
Fax: 914.934.2190
MonoSystems.com



Cable Tray / Aluminum Tray

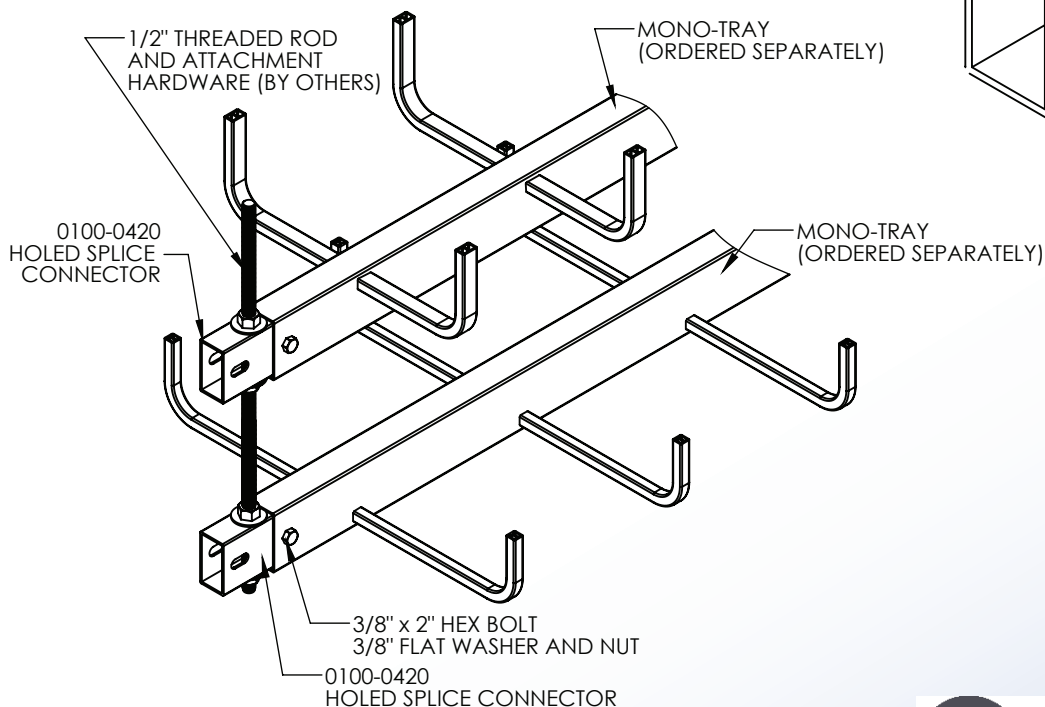
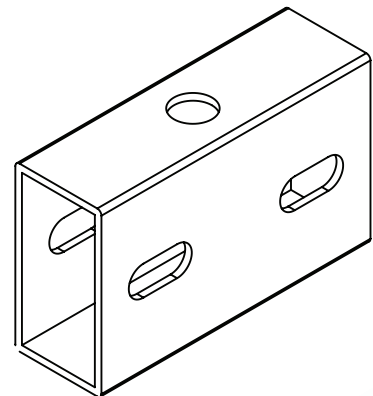
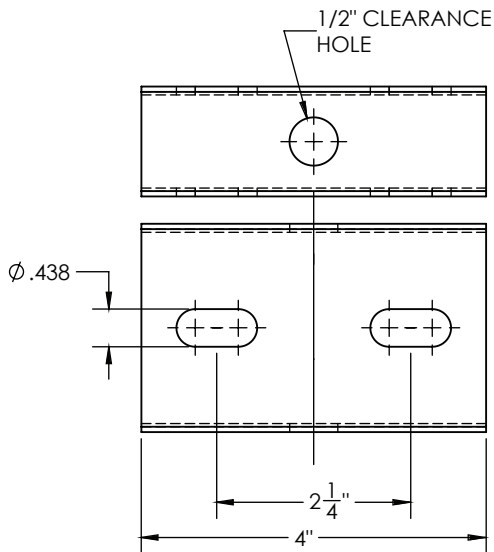
0100-0420

MonoTray™ Accessories
Manufactured in the USA by MonoSystems, Inc.

HOLED SPLICE CONNECTOR FOR ALUMINUM TRAY

Notes:

- 1.) Ordered as each or (1x) included with tray mounting hardware (when tray section is ordered).
- 2.) Accepts 1/2" [12mm] hanger rod (by others).
- 3.) Attach to end of tray using 3/8" X 2" hex bolt & 3/8" flat washer and nut.
- 4.) For use with monotray, dual rail, and wall rack.
- 5.) Views for reference - do not scale.



4 International Drive
Rye Brook, NY 10573
Toll Free: 1 888.764.7681
Phone: 914.934.2075
Fax: 914.934.2190



Cable Tray / Aluminum Tray CB-1XXX-032X-X

MonoTray™

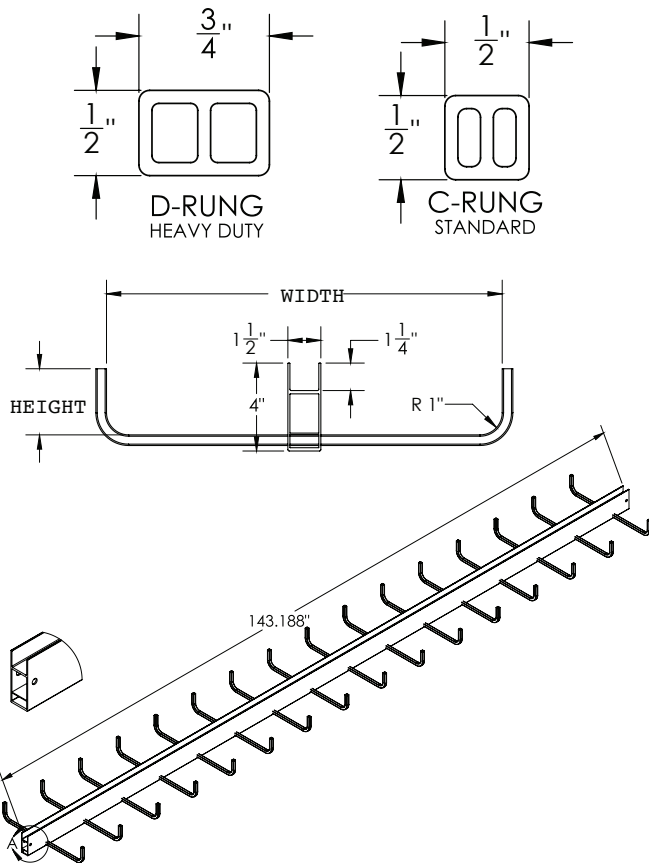
Manufactured in the USA by MonoSystems, Inc.

4"H SPINE - BOTTOM RUNG ALUMINUM MONO-TRAY

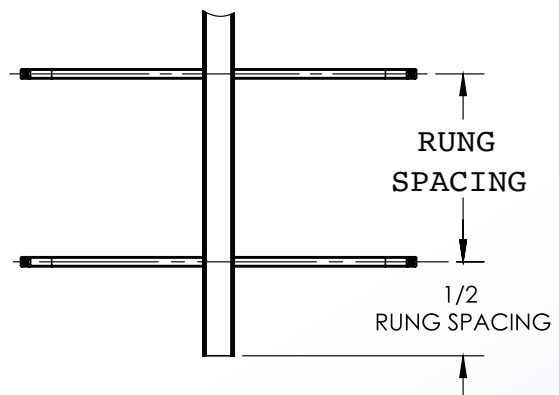
Notes:

Material: Aluminum 6063

- 1.) One splice connector and 3/8" hardware is provided with each tray length.
- 2.) Not all accessories are compatible with 4" high spine tray. Consult factory for details.
- 3.) Standard length: 143-3/16", 12' including center hole in splice connector.
- 3.) Views for reference - do not scale.



MONOTRAY ALUMINUM SPINE DEFLECTION & LOAD CLASS					
SPINE TYPE	SUPPORT SPAN		DEFLECTION		NEMA RATING
	FT	M	FT	MM	
STANDARD	12	3.6	2.8	71	12C (100 lbs/ft/12')



ORDERING DATA EXAMPLE:

CB-1-XXX-032X-X

TRAY STYLE

CB = 4"H SPINE
BOTTOM RUNG

MATERIAL

1 = ALUMINUM
4 = EPOXY PAINT
ALUMINUM
6 = ANODIZED
ALUMINUM

RUNG SPACING

1 = 6"
2 = 9"
3 = 12"
4 = 18"

RUNG HEIGHT

3 = 3"
4 = 4"
6 = 6"

LENGTH TRAY

32 = 12'

TRAY WIDTH

6 = 6" [7.5" ACTUAL]
9 = 9" [10.5" ACTUAL]
12 = 12" [13.5" ACTUAL]
18 = 18"
24 = 24"

RUNG STYLE

C = "C" RUNG
(STANDARD)
D = "D" 3/4" RUNG

4 International Drive
Rye Brook, NY 10573
Toll Free: 1 888.764.7681
Phone: 914.934.2075
Fax: 914.934.2190
MonoSystems.com



Cable Tray/Center Spine

0100-06X0-A



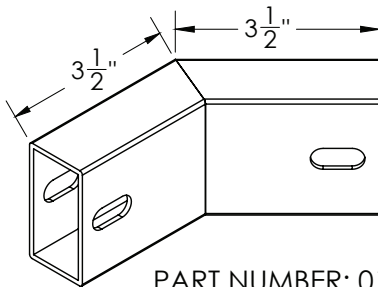
MonoTray™ Accessories

Manufactured in the USA by MonoSystems, Inc.

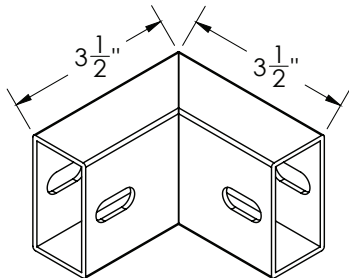
FIXED ANGLE CONNECTORS

Notes:

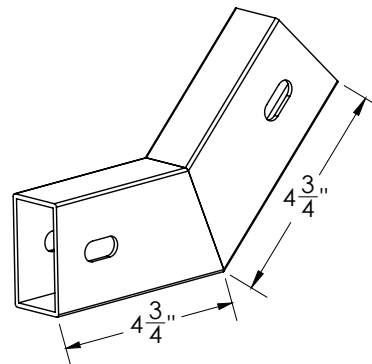
- 1.) Material: Mill finish 6063 aluminum.
- 2.) For fixed vertical or horizontal change. For use with all center spine type trays.
- 3.) Attach angle connector to tray using provided 3/8" hardware.
- 4.) Tray must be supported a minimum distance of 6' from connector location.
- 5.) Load: 100lb capacity.
- 6.) For vertical pivot connectors see P/N: 0100-0422.
For horizontal pivot connectors P/N: 0100-0423.
- 7.) Views for reference - do not scale.



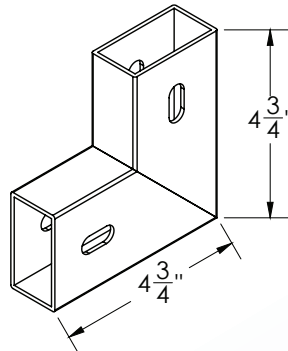
PART NUMBER: 0100-0660-45
FIXED HORIZONTAL 45° ANGLE CONNECTOR



PART NUMBER: 0100-0660-90
FIXED HORIZONTAL 90° ANGLE CONNECTOR



PART NUMBER: 0100-0650-45
FIXED VERTICAL 45° ANGLE CONNECTOR



PART NUMBER: 0100-0650-90
FIXED VERTICAL 90° ANGLE CONNECTOR

4 International Drive
Rye Brook, NY 10573
Toll Free: 1 888.764.7681
Phone: 914.934.2075
Fax: 914.934.2190
MonoSystems.com

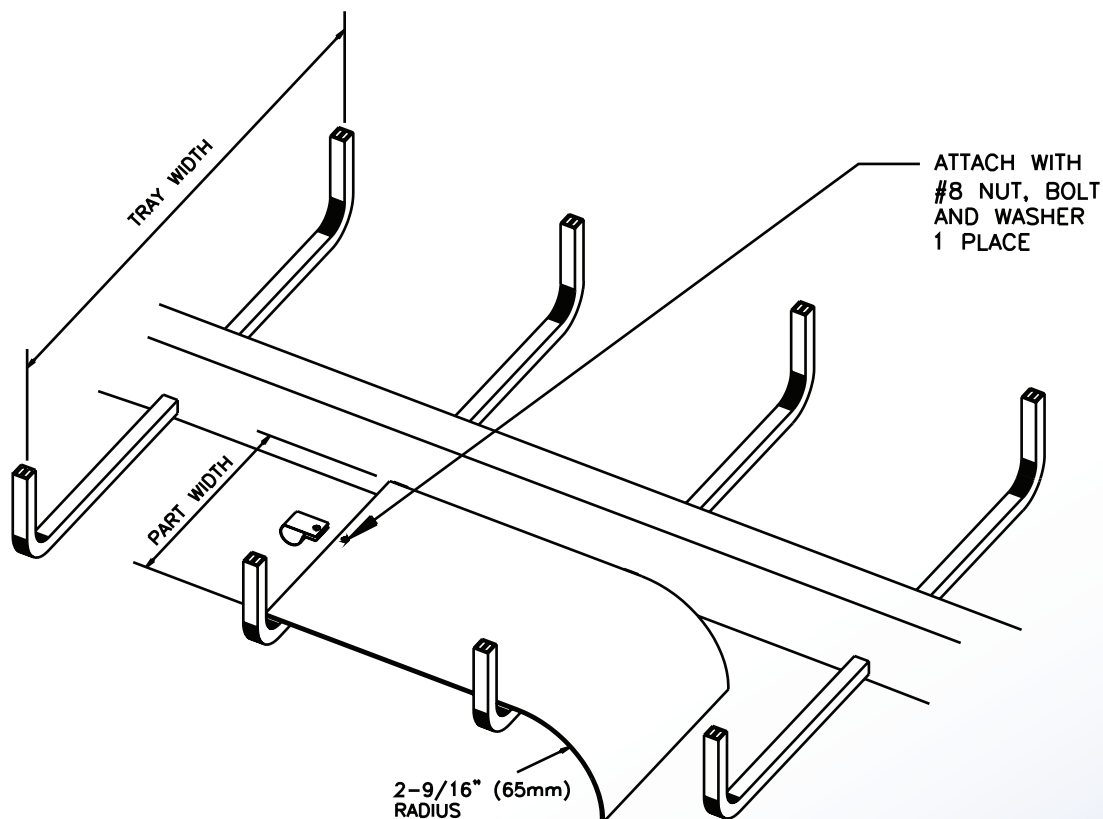


ALUMINUM DROPOUT FOR MONO-TRAY

MONO TRAY ALUMINUM DROPOUT			
TRAY WIDTH	PART WIDTH		ALUMINUM CAT. P/N
	IN.	mm	
6"	1.25"	32	0100-0417
9"	2.75"	70	0100-0410
12"	4.25"	108	0100-0411
18"	7.25"	184	0100-0412
24"	10.25"	260	0100-0413

Notes:

- 1.) Material: Mill finish aluminum 6063.
- 2.) Load 50 lbs capacity.
- 3.) Minimum support distance is 6'-0".



4 International Drive
Rye Brook, NY 10573
Toll Free: 1 888.764.7681
Phone: 914.934.2075
Fax: 914.934.2190
MonoSystems.com



MonoSystems™
Expect. Direct.

Cable Tray / Center Spine AX-X002-FP-PR

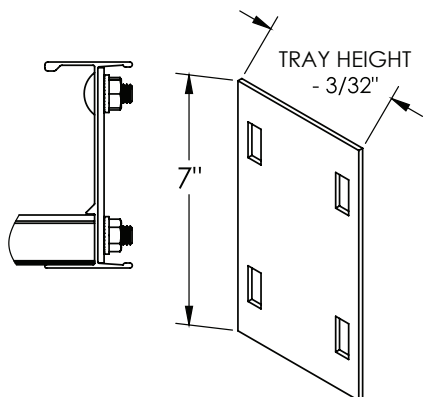
MonoTray™ Accessories

Manufactured by MonoSystems, Inc.

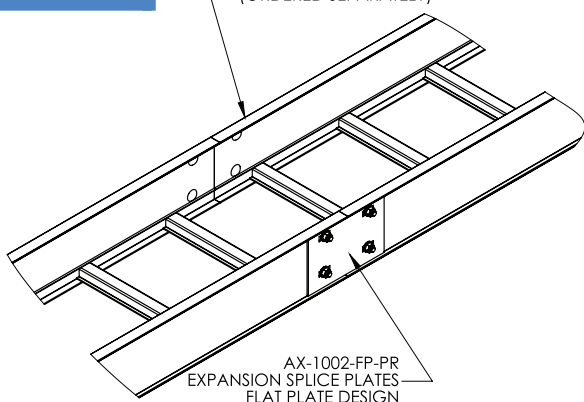
EXPANSION SPLICE PLATES, FLAT PLATE DESIGN ALUMINUM POWER TRAY

Notes:

- 1.) For connecting two sections of power tray.
- 2.) Accommodates expansion or contraction of the tray.
- 3.) Includes two expansion splice plates with tray connection hardware.
- 4.) When installing, ensure flush contact between splice plate and power tray. When installing, torque 3/8" fasteners to 19 ft-lbs [21.7 Nm], torque 1/4" fasteners to 6 ft-lbs [8.1 Nm]. Then back off 1/4 turn.
- 5.) Grounding straps (C0-X060-X) (ordered separately) must be used with expansion splice connectors.
- 6.) Views for reference - do not scale.

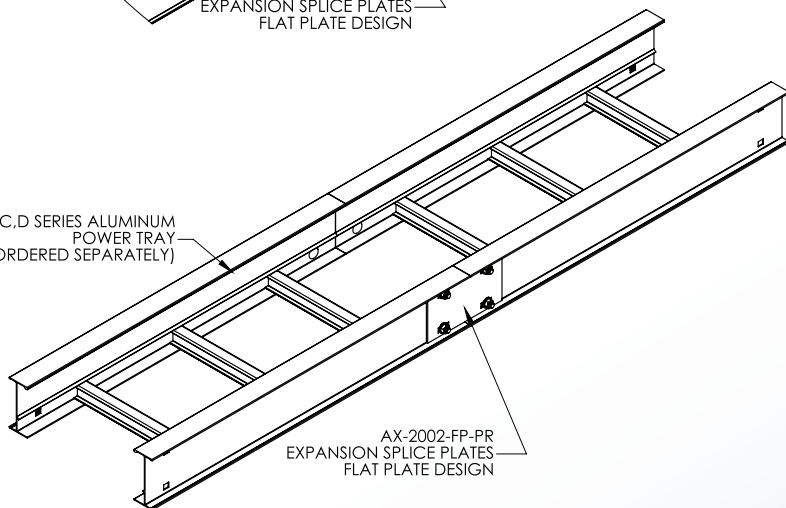


L SERIES ALUMINUM
POWER TRAY
(ORDERED SEPARATELY)



AX-1002-FP-PR
EXPANSION SPLICE PLATES
FLAT PLATE DESIGN

B,C,D SERIES ALUMINUM
POWER TRAY
(ORDERED SEPARATELY)



AX-2002-FP-PR
EXPANSION SPLICE PLATES
FLAT PLATE DESIGN

ORDERING DATA EXAMPLE:

AX-X002-FP-PR

MATERIAL

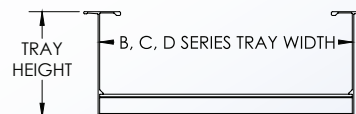
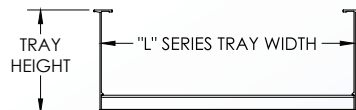
A =
ALUMINUM

TRAY HEIGHT

4 = 4"
5 = 5"
6 = 6"
7 = 7"

SERIES

1 = "L" LITE SERIES
2 = SERIES: B,C,D



4 International Drive
Rye Brook, NY 10573
Toll Free: 1 888.764.7681
Phone: 914.934.2075
Fax: 914.934.2190
MonoSystems.com



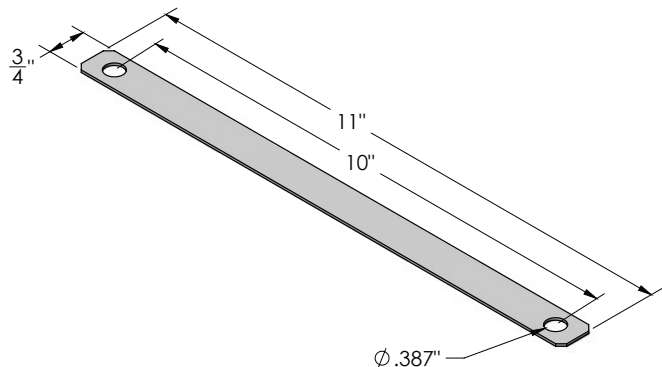
MonoSystems™
Expect. Direct.

MonoTray

0100-0521

Mono-Tray™ Accessories
Manufactured by MonoSystems, Inc.

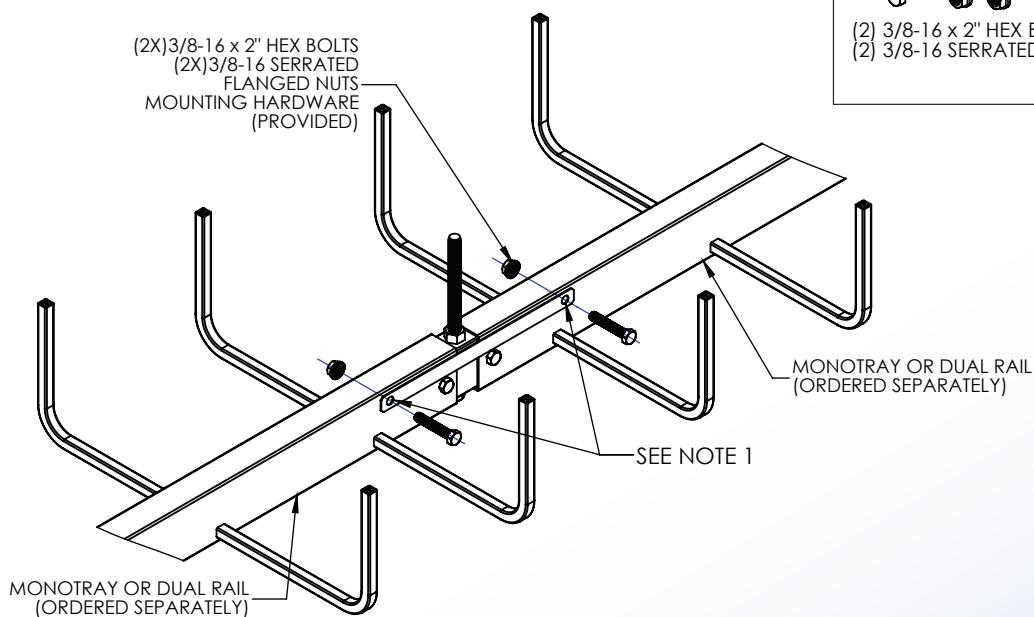
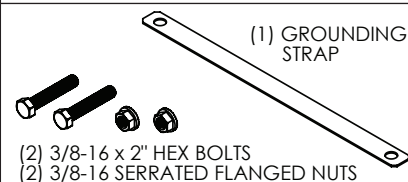
FLEXIBLE GROUNDING STRAP



Notes:

- 1.) To install, align braided grounding strap to MonoTray spine in desired location and mark (2x) hole locations. Field drill 3/8" holes completely through spine at marked locations. Place grounding strap flush against spine of adjoining trays and feed provided 3/8-16 x 2" hex bolt thru hole. Capture on other end of spine with serrated flanged nut. To ensure proper grounding, remove all paint at strap to tray contact points (if applicable).
- 2.) Recommended torque for 3/8" mounting hardware: 25ft-lbs [33.9Nm].
- 3.) Grounding strap material: tinned copper. Braid rating: 85 amps, braid AWG equiv. 7AWG.
- 4.) Views for reference, do not scale.

EACH 0100-0521 PROVIDED AS



4 International Drive
Rye Brook, NY 10573
Toll Free: 1 888.764.7681
Phone: 914.934.2075
Fax: 914.934.2190
MonoSystems.com



Cable Tray / Center Spine 010X-0440

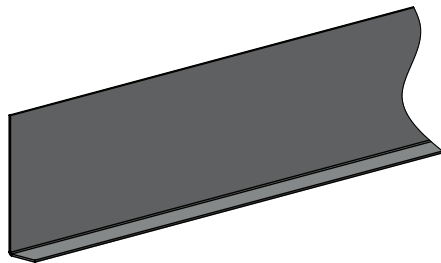
MonoTray™ Accessories

Manufactured by MonoSystems, Inc.

TRAY DIVIDER

Notes:

- 1.) Use to create separate compartments in a cable tray run.
- 2.) For use with top or bottom run aluminum MonoTray and dual rail trays.
- 3.) Divider lengths solid individually. Supplied in 12' lengths standard.
- 4.) Supplied with (8x) #8 x 1/2" phil. pan. tek screws for installation.
- 5.) Installation instructions:
 - Align divider flush with end of MonoTray or as desired.
 - Position divider to desired horz. location and clamp in place to rungs.
 - Field install #8 tek screws thru divider and into rungs.
- 6.) Views for reference - do not scale.

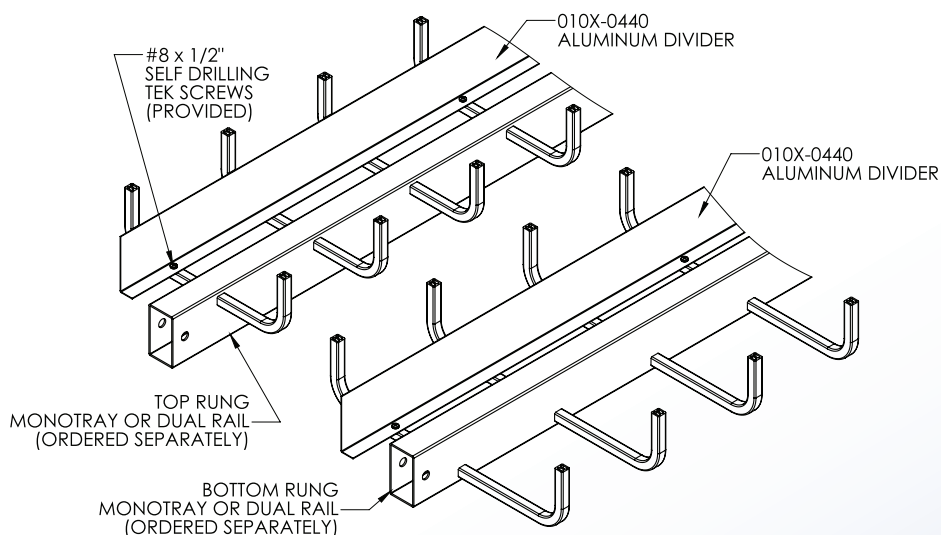


ORDERING DATA EXAMPLE:

010X-0440

TRAY HEIGHT

3 = 3"
4 = 4"
6 = 6"



4 International Drive
Rye Brook, NY 10573
Toll Free: 1 888.764.7681
Phone: 914.934.2075
Fax: 914.934.2190
MonoSystems.com



Cable Tray / Center Spine E1104-124X



FILE: E80034
VOL.3

MonoTray™

Manufactured in the USA by MonoSystems, Inc.

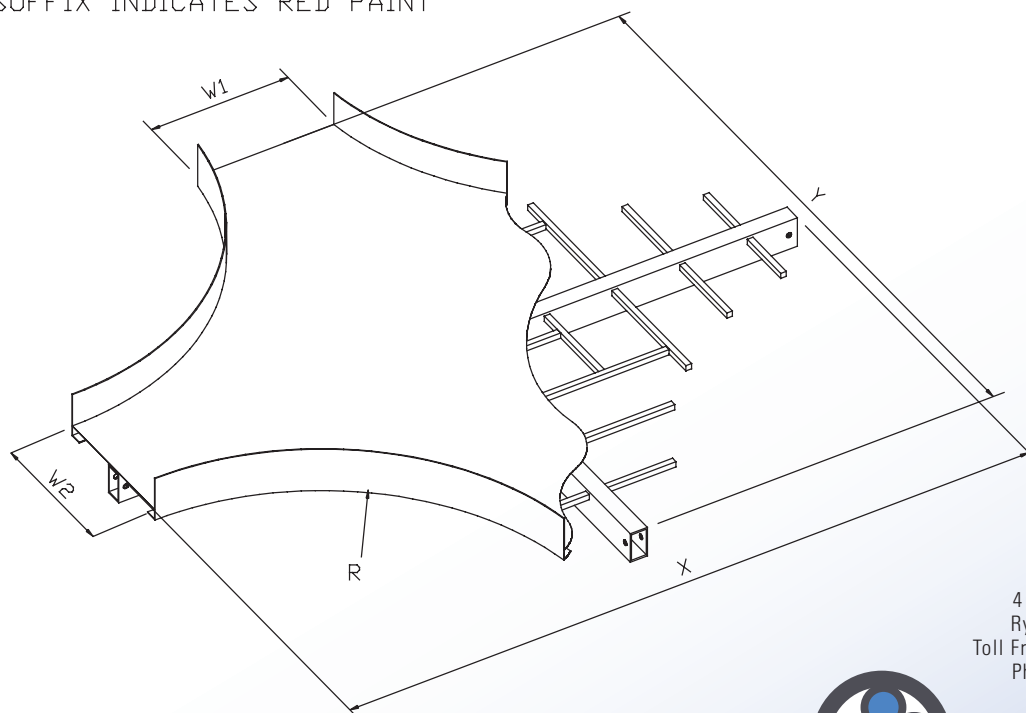


TOP RUNG RADIUS GUIDE CROSS 4" HIGH MONO-TRAY ALUMINUM

P/N:	"W1"	"W2"	"R"	"X"	"Y"
E1104-1244-RAD-D-5/8-PR	18"	18"	12"	48"	48"
E1104-1243-4-RAD-D-5/8-PR	18"	12"	12"	48"	42"
E1104-1243-RAD-D-5/8-PR	12"	12"	12"	42"	42"
E1104-2244-RAD-D-5/8-PR	18"	18"	18"	72"	72"

LEXAN LINER (ORDER CABLE TRAY SEPARATELY)			
P/N:	"W"	"R"	
E1104-1243-RAD-GCL-V2	12"	12"	
E1104-1244-4-RAD-GCL-V2	18"	12"	
E1104-1243-RAD-GCL-V2	12"	12"	
E1104-2244-RAD-GCL-V2	18"	18"	

*PR SUFFIX INDICATES RED PAINT



4 International Drive
Rye Brook, NY 10573
Toll Free: 1 888.764.7681
Phone: 914.934.2075
Fax: 914.934.2190
MonoSystems.com



MonoSystems™
wire management. managed.™

Cable Tray / Center Spine MT-DR-FIT



FILE: E80034
VOL.3

MonoTray™

Manufactured in the USA by MonoSystems, Inc.



DUAL RAIL FITTING SELECTION

Notes

- 1.) Most elbows, tees and directional changes can be achieved by utilizing standard components and Quick Fittings. Welded fittings are designed to accommodate specific cable radii requirements. Support documentation / details are available upon request.
- 2.) Splice connector and included hardware are provided for each fitting

ORDERING DATA EXAMPLE:

Top Rung Mono-Tray Aluminum, 3" Rung Height, 18" Radius, 90° Horizontal Elbow, 9" Wide

X1103-2232

TRAY STYLE

B = BOTTOM
RUNG TRAY
L = LIGHT DUTY
TRAY

For Top Rung
Standard Tray
No Letter Prefix
is required.

TRAY TYPE

1 = MONO-TRAY
2 = DUAL-RAIL

MATERIAL

1 = ALUMINUM
2 = PRE-GALV
STEEL
3 = HDGAF
4 = EPOXY PAINT
(ALUMINUM)
5 = EPOXY PAINT
(STEEL)
6 = ANODIZED
ALUMINUM

RUNG HEIGHT

3 = 3" (75M) HIGH
4 = 4" (100M) HIGH
6 = 6" (150MM) HIGH

FITTING TYPE

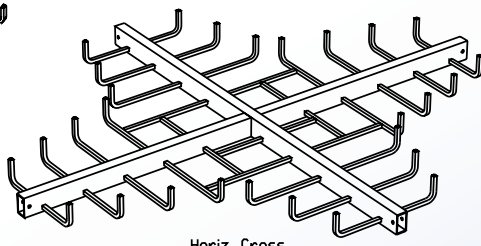
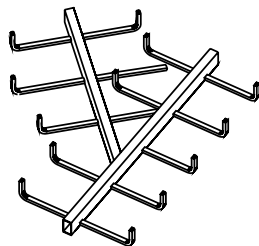
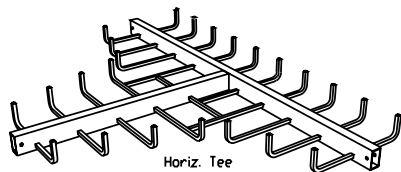
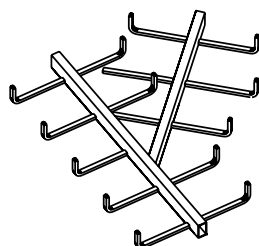
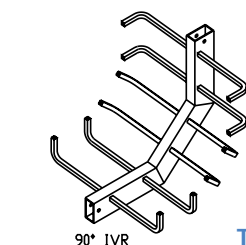
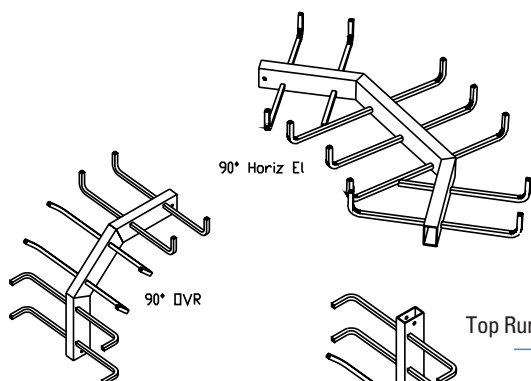
01 = 30° IVR
02 = 45° IVR
03 = 60° IVR
04 = 90° IVR
05 = 30° OVR
06 = 45° OVR
07 = 60° OVR
08 = 90° OVR
09 = VERT. CROSS
10 = VERT. TEE IVR
11 = VERT. TEE OVR
12 = CABLE HANGER EL
20 = 30° HORIZ EL
21 = 45° HORIZ EL
22 = 60° HORIZ EL
23 = 90° HORIZ EL
24 = HORIZ. CROSS
25 = HORIZ. TEE
26 = HORIZ. WYE R.H.
27 = HORIZ. WYE R.H.

TRAY WIDTH

1 = 6" (150MM) WIDE
2 = 9" (225MM) WIDE
3 = 12" (300MM) WIDE
4 = 18" (450MM) WIDE
5 = 24" (600MM) WIDE
6 = 36" (900MM) WIDE
7 = 3" (75MM) WIDE
8 = 4" (100MM) WIDE
9 = 30" (750MM) WIDE

RADIUS

1 = 12" (800MM)
2 = 18" (450MM)
3 = 24" (600MM)
4 = 36" (900MM)
5 = 6" (150MM)
6 = 30" (750MM)



4 International Drive
Rye Brook, NY 10573
Toll Free: 1 888.764.7681
Phone: 914.934.2075
Fax: 914.934.2190
MonoSystems.com



MonoSystems™
wire management. managed.

Cable Tray / Center Spine MT-FIT



FILE: E80034
VOL.3

MonoTray™

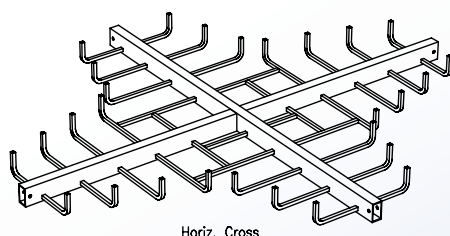
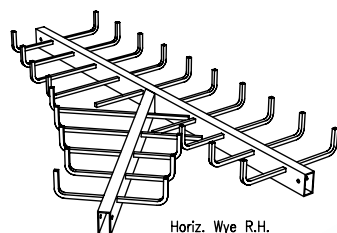
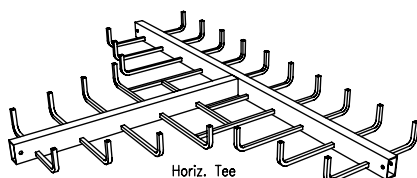
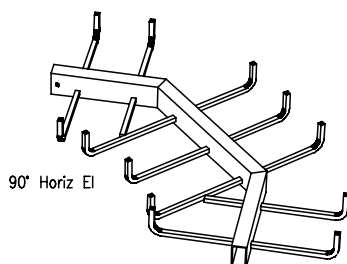
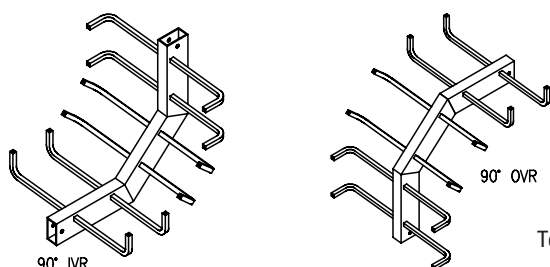
Manufactured in the USA by MonoSystems, Inc.



FITTING QUICK SELECTOR

Notes

1.) Most elbows, tees and directional changes can be achieved by utilizing standard components and Quick Fittings. Welded fittings are designed to accommodate specific cable radii requirements. Support documentation / details are available upon request.



ORDERING DATA EXAMPLE:

Top Rung Mono-Tray Aluminum, 3" Rung Height, 18" Radius, 90° Horizontal Elbow, 9" Wide

X1103-2232

TRAY STYLE

B = BOTTOM
RUNG TRAY
L = LIGHT DUTY
TRAY

For Top Rung
Standard Tray
No Letter Prefix
is required.

TRAY TYPE

1 = MONO-TRAY
2 = DUAL-RAIL

MATERIAL

1 = ALUMINUM
2 = PRE-GALV
STEEL
3 = HDGAF
4 = EPOXY PAINT
(ALUMINUM)
5 = EPOXY PAINT
(STEEL)
6 = ANODIZED
ALUMINUM

RUNG HEIGHT

3 = 3" (75M) HIGH
4 = 4" (100M) HIGH
6 = 6" (150MM) HIGH

FITTING TYPE

01 = 30° IVR
02 = 45° IVR
03 = 60° IVR
04 = 90° IVR
05 = 30° OVR
06 = 45° OVR
07 = 60° OVR
08 = 90° OVR
09 = VERT. CROSS
10 = VERT. TEE IVR
11 = VERT. TEE OVR
12 = CABLE HANGER EL
20 = 30° HORIZ EL
21 = 45° HORIZ EL
22 = 60° HORIZ EL
23 = 90° HORIZ EL
24 = HORIZ. CROSS
25 = HORIZ. TEE
26 = HORIZ. WYE R.H
27 = HORIZ. WYE R.H

TRAY WIDTH

1 = 6" (150MM) WIDE
2 = 9" (225MM) WIDE
3 = 12" (300MM) WIDE
4 = 18" (450MM) WIDE
5 = 24" (600MM) WIDE
6 = 36" (900MM) WIDE
7 = 3" (75MM) WIDE
8 = 4" (100MM) WIDE
9 = 30" (750MM) WIDE

RADIUS

1 = 12" (800MM)
2 = 18" (450MM)
3 = 24" (600MM)
4 = 36" (900MM)
5 = 6" (150MM)
6 = 30" (750MM)

4 International Drive
Rye Brook, NY 10573
Toll Free: 1 888.764.7681
Phone: 914.934.2075
Fax: 914.934.2190
MonoSystems.com



MonoSystems™
wire management. managed.™