

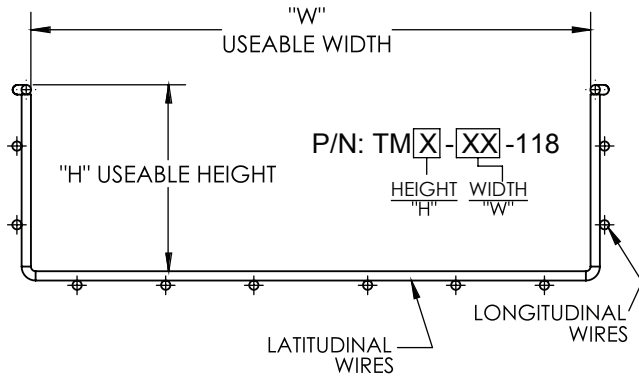
Innovations / MonoMesh INSTALLATION

TMX-XX-TEE MonoMesh™ Install

Manufactured by MonoSystems, Inc.

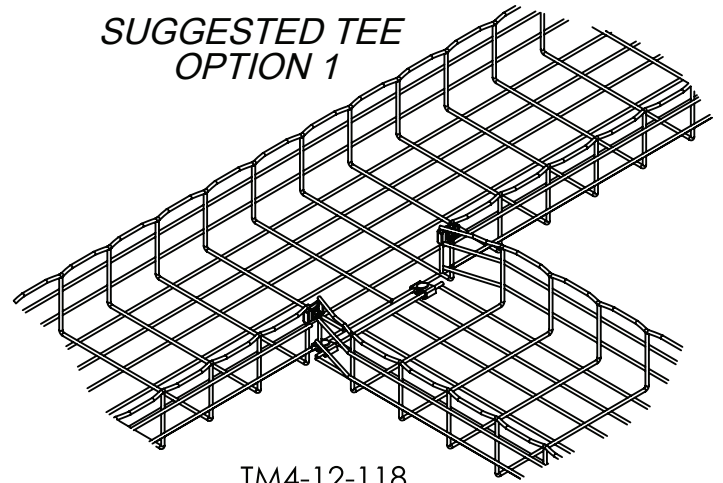
INSTALLATION INSTRUCTIONS:

- 1.) Measure desired location of tee.
- 2.) Cut away Mono T-weld mesh slightly larger or smaller than width of tray to nearest vertical wire.
- 3.) Bend and adjoin vertical wires.
- 4.) Install TM-CPL-JN3 clips as shown.

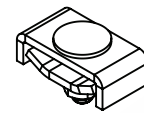
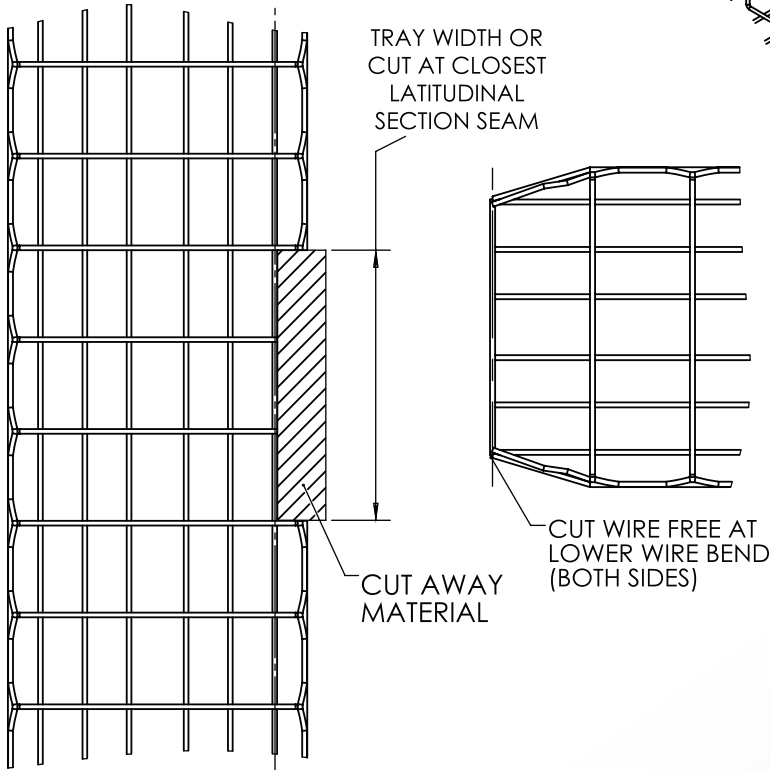


MONO MESH HEIGHT	MONO MESH WIDTH	QTY OF TM-CPL-JN3
2"	3" 6" 8"	3
4" OR 6"	3" 6" 8"	3
2"	10" 12"	4
4" OR 6"	10" 12"	4
2"	16" 18"	4
4" OR 6"	16" 18"	6
2"	20" 24"	5
4" OR 6"	20" 24"	7

SUGGESTED TEE OPTION 1



TM4-12-118
TRAY SHOWN



TM-CPL-JN3
VIEW SCALE 1:2

4 International Drive
Rye Brook, NY 10573
Toll Free: 1 888.764.7681
Phone: 914.934.2075
Fax: 914.934.2190
MonoSystems.com

