

PVC Cable Organization...



Latching Duct

Latching Duct is a one piece wire and cable organization system with an integrated, flexible hinge. Standard 60" lengths come with a factory applied adhesive backing. A complete array of Category 5 and 6 radius fittings and device boxes match raceway design and color. Meets UL94V-0 testing.



Cable Hider

Cable Hider is a two piece raceway design that allows the wire, cord, or cable to be easily installed by pressing it through the flexible flaps. A clear base channel allows visual load and cable ID checks. The colored cover snaps over the base. Each 60" length is provided with an adhesive backing. A complete array of Category 5 and 6 radius fittings and device boxes match raceway design and color. Meets UL94V-0 testing.



Cordway

Cordway reduces the tripping hazard, and provides protection, for cords and cables installed along floors. The pressure sensitive adheres quickly to most flooring surface.



Two-Piece Raceway

Two-Piece Raceway shares all of the same components of Latching Duct and CordHider. With a similar profile and identical capacity, the PVC Two Piece Raceway features a fully removable cover providing full access to the raceway interior.

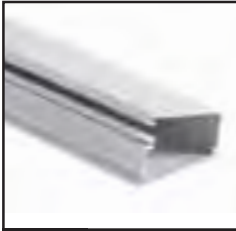


Coveway

Coveway... Finally! an attractive solution to running cords and cables around the perimeters of rooms. The architecturally pleasing design of Coveway allows cables to be run in the corners of walls and ceilings without disturbing room aesthetics.



Latching Duct & Two-Piece Raceway



LATCHING DUCT WITH HINGE TOP RACEWAY

LDR-7560A .75"W x .54"H x 5'L - W/Adh. Almond

LDR-7560W .75"W x .54"H x 5'L - W/Adh. White

LDR-10060A 1"W x .54"H x 5'L - W/Adh. Almond

LDR-10060W 1"W x .54"H x 5'L - W/Adh. White

LDR-15060A 1.5"W x .79"H x 5'L - W/Adh. Almond

LDR-15060W 1.5"W x .79"H x 5'L - W/Adh. White



TWO-PIECE RACEWAY

TPR-7560A .75"W x .54"H x 5'L - W/Adh. Almond

TPR-7560W .75"W x .54"H x 5'L - W/Adh. White

TPR-10060A 1"W x .54"H x 5'L - W/Adh. Almond

TPR-10060W 1"W x .54"H x 5'L - W/Adh. White

TPR-15060A 1.5"W x .79"H x 5'L - W/Adh. Almond

TPR-15060W 1.5"W x .79"H x 5'L - W/Adh. White

Cable Hider



Cable Hider Cover

Snaps over CableHider base for a clean, finished installation.

(CableHider cover must be used in all power applications).

FCL-7560A .75"W x .54"H x 5'L - Almond

FCL-7560W .75"W x .54"H x 5'L - White

FCL-10060A 1"W x .54"H x 5'L - Almond

FCL-10060W 1"W x .54"H x 5'L - White

FCL-15060A 1.5"W x .79"H x 5'L - Almond

FCL-15060W 1.5"W x .79"H x 5'L - White



Cable Hider Base

Simply push wire or cables into base. May be used with, or without cover (purchase cover separately).

(CableHider cover must be used in all power applications).

FWH-7560A .75"W x .54"H x 5'L - Almond

FWH-7560W .75"W x .54"H x 5'L - White

FWH-10060A 1"W x .54"H x 5'L - Almond

FWH-10060W 1"W x .54"H x 5'L - White

FWH-15060A 1.5"W x .79"H x 5'L - Almond

FWH-15060W 1.5"W x .79"H x 5'L - White



Device Mounting Boxes

Device Boxes are for use with all CableHider, Latching Duct and Two Piece Raceways



SWP2348 Almond
SWP2348-W White

- Single Gang Design
- Knockout Pattern on back allows for use as a wall box feed with existing wall boxes.
- Removable cover knockouts allow raceway access each side.
- For use with all sizes of CableHider, Latching Duct, and Two Piece Raceway.
- Durable PVC construction with attractive textured finish.
- Dimensions: 3 1/8"W X 4 3/4"H X 1 3/4"D



SWP2348-2 Almond
SWP2348-2-W White

- Two Gang Design
- Knockout Pattern on back allows for use as a wall box feed with existing wall boxes.
- Removable cover knockouts allow raceway access each side.
- For use with all sizes of CableHider, Latching Duct, and Two Piece Raceway.
- Durable PVC construction with attractive textured finish.
- Dimensions: 4 7/8"W X 4 3/4"H X 1 3/4"D



SWP2338-A Almond
SWP2338A-W White

- Round Fixture Box
- 1/2" Trade knockout on back
- Cover features knockouts on all four sides.
- Standard mounting face configuration.
- For use with all sizes of CableHider, Latching Duct, and Two Piece Raceway.
- Durable PVC Construction
- Dimensions: 5 1/2" Dia. X 1/2"D



SWP2348S-A Almond
SWP2348S-W White

- Single Gang Design
- Knockout Pattern on back allows for use as a wall box feed with existing wall boxes.
- Removable cover knockouts allow raceway access each side.
- For use with all sizes of CableHider, Latching Duct, and Two Piece Raceway.
- Durable PVC construction with attractive textured finish.
- Dimensions: 3 1/8"W X 4 3/4"H X 1 D

Note: Round fixture box is not intended for heavy fixtures or fans



ACCESSORIES (for use with all CableHider, Latching Duct and Two Piece Raceways)



Right Angle

FRA-75A 3/4" Flat Elbow, Almond
FRA-75W 3/4" Flat Elbow, White
FRA-100A 1" Flat Elbow, Almond
FRA-100W 1" Flat Elbow, White
FRA-150A 1.5" Flat Elbow, Almond
FRA-150W 1.5" Flat Elbow, White



Inside Corner

FIC-75A 3/4" Int. Elbow, Almond
FIC-75W 3/4" Int. Elbow, White
FIC-100A 1" Int. Elbow, Almond
FIC-100W 1" Int. Elbow, White
FIC-150A 1.5" Int. Elbow, Almond
FIC-150W 1.5" Int. Elbow, White



Outside Corner

FOC-75A 3/4" Ext. Elbow, Almond
FOC-75W 3/4" Ext. Elbow, White
FOC-100A 1" Ext. Elbow, Almond
FOC-100W 1" Ext. Elbow, White
FOC-150A 1.5" Ext. Elbow, Almond
FOC-150W 1.5" Ext. Elbow, White



Ceiling Drop

FCD-75A 3/4" Ceiling Drop, Almond
FCD-75W 3/4" Ceiling Drop, White
FCD-100A 1" Ceiling Drop, Almond
FCD-100W 1" Ceiling Drop, White
FCD-150A 1.5" Ceiling Drop, Almond
FCD-150W 1.5" Ceiling Drop, White



End Cap

FEC-75A 3/4" End Cap, Almond
FEC-75W 3/4" End Cap, White
FEC-100A 1" End Cap, Almond
FEC-100W 1" End Cap, White
FEC-150A 1.5" End Cap, Almond
FEC-150W 1.5" End Cap, White



Tee

FTC-75A 3/4" Tee, Almond
FTC-75W 3/4" Tee, White
FTC-100A 1" Tee, Almond
FTC-100W 1" Tee, White
FTC-150A 1.5" Tee, Almond
FTC-150W 1.5" Tee, White



Reducer

FRD-10075A 1"-3/4" Reducer, Almond
FRD-10075W 1"-3/4" Reducer, White
FRD-150100A 1.5"-1" Reducer, Almond
FRD-150100W 1.5"-1" Reducer, White



Cover Clip

FSC-75A 3/4" Splice Conn., Almond
FSC-75W 3/4" Splice Conn., White
FSC-100A 1" Splice Conn., Almond
FSC-100W 1" Splice Conn., White
FSC-150A 1.5" Splice Conn., Almond
FSC-150W 1.5" Splice Conn., White

For use with Latching Duct and Two-Piece Raceway only.



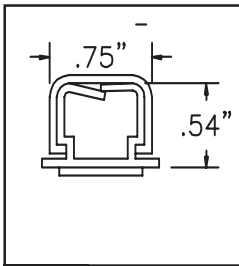
Entrance End

FCA-150A Conduit Adaptor, Almond
FCA-150W Conduit Adaptor, White

Fits 3/4 - 1 1/2 Raceway

RACEWAY SIZE		.75" X .54" X 5'L		1" X .54" X 5'L		1.5" X .79" X 5'L	
CABLE/WIRE SIZE	CATEGORY/DESIGNATION	20%	40%	20%	40%	20%	40%
UNSHIELDED TWISTED PAIR	4-PAIR, 24 AWG Cat 5 UTP	0	1	1	3	4	8
	4-PAIR, 24 AWG Cat 3 UTP	1	2	2	4	5	11
TELEPHONE	2-PAIR, 24 AWG	2	4	4	8	10	21
	3-PAIR, 24 AWG	1	3	3	7	9	18
	4-PAIR, 24 AWG	1	2	2	4	5	11
	25-PAIR, 24 AWG	0	0	0	1	1	2
COAXIAL	RG58/U	1	2	2	4	5	11
	RG59/U	0	1	1	2	3	7
	RG62/U	0	1	1	2	3	7
	RG6/U	0	1	1	2	2	5
TWINAXIAL	100 Ohm	0	0	0	1	1	3
SHIELDED TWISTED PAIR	TYPE 1	0	0	0	1	1	3
	TYPE 2	0	0	0	0	1	2
	TYPE 3	0	1	1	2	3	8
FIBER OPTIC	Two Strand (Duplex) Multimode, 62.5/125µm	1	2	2	4	5	11

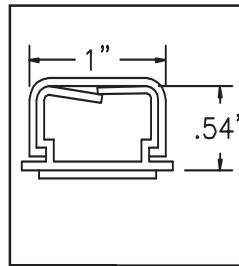
Cable Hider



.75" CABLE HIDER WITH FCL-7560 COVER SHOWN

White or Almond

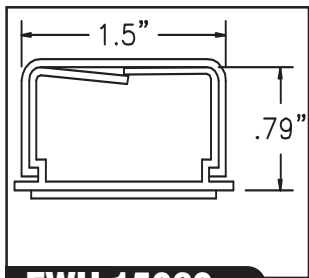
FWH-7560



1" CABLE HIDER WITH FCL-10060 COVER SHOWN

White or Almond

FWH-10060

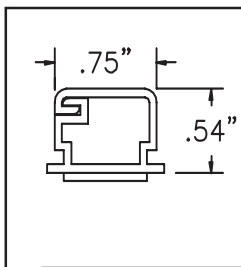


1.5" CABLE HIDER WITH FCL-15060 COVER SHOWN

White or Almond

FWH-15060

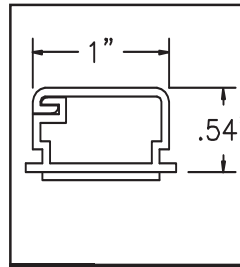
Latching Duct



.75" LATCHING DUCT

White or Almond

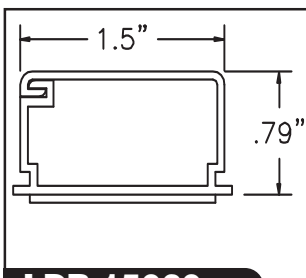
LDR-7560



1" LATCHING DUCT

White or Almond

LDR-10060



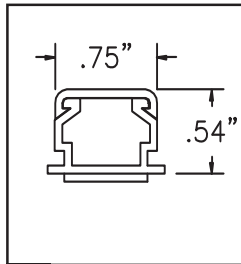
1.5" LATCHING DUCT

White or Almond

LDR-15060



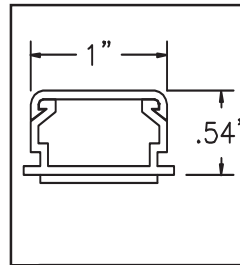
Two Piece Raceway



.75" TWO PIECE RACEWAY

White or Almond

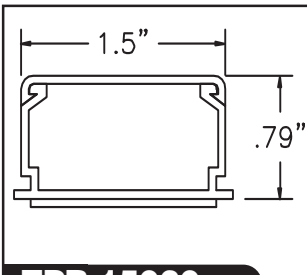
TPR-7560



1" TWO PIECE RACEWAY

White or Almond

TPR-10060



1.5" TWO PIECE RACEWAY

White or Almond

TPR-15060

RACEWAY FILL CAPACITY CHART											
RACEWAY MODEL NUMBER		TPR-7560	LDR-7560	FWH-7560	TPR-10060	LDR-10060	FWH-10060	TPR-15060	LDR-15060	FWH-15060	
RACEWAY AREA		0.219	0.259	0.187	0.488	0.488	0.488	0.823	0.823	0.823	
WIRE TYPE	WIRE DIA. (IN.)	WIRE AREA. (SQ. IN.)	↓	↓	↓	↓	↓	↓	↓	↓	
BUILDING WIRE THHN											
14 AWG	0.108	0.0092	2	3	2	5	5	5	9	9	9
12 AWG	0.126	0.0125	2	2	2	4	4	4	7	7	7
10 AWG	0.17	0.0227	1	1	1	2	2	2	4	4	4
SIGNAL UL STYLE 1061 300V 80°C *											
18 AWG	0.066	0.0034	26	30	22	57	57	57	97	97	97
20 AWG	0.06	0.0028	31	37	26	69	69	69	118	118	118
22 AWG	0.05	0.002	45	53	38	99	99	99	170	170	170
24 AWG	0.045	0.0016	55	65	47	123	123	123	209	209	209
TWISTED PAIR WIRE 24AWG *											
2 PAIR	0.14	0.0154	6	7	5	13	13	13	22	22	22
3 PAIR	0.15	0.0177	5	6	4	11	11	11	19	19	19
4 PAIR CAT 5	0.22	0.038	2	3	2	5	5	5	9	9	9
25 PAIR	0.51	0.2042	0	0	0	1	1	1	2	2	2
TWISTED PAIR (SHIELDED) *											
4 PAIR, 24 AUG	0.25	0.0491	2	2	2	4	4	4	7	7	7
25 PAIR, 24 AUG	0.51	0.2042	0	0	0	1	1	1	2	2	2
TYPE 1A, 22 AUG	0.43	0.1451	1	1	1	1	1	1	2	2	2
COAX CABLE (MAX) *											
RG58/U	0.193	0.0292	3	4	3	7	7	7	11	11	11
RG59/U RG62/U	0.242	0.046	2	2	2	4	4	4	7	7	7
RG6/U	0.27	0.0572	2	2	1	3	3	3	6	6	6
FIBER OPTIC CABLE 62.5/125/900, PVC JACKET, DFNR *											
2 STRAND	0.175	0.024	4	4	3	8	8	8	14	14	14
4 STRAND	0.185	0.0269	3	4	3	7	7	7	12	12	12
6 STRAND	0.21	0.0346	3	3	2	6	6	6	10	10	10

* BASED ON 40% FILL RATIO

Coveway®



COVEWAY RACEWAY

With adh. white

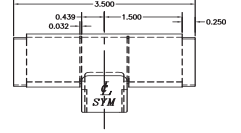


CW150-60-W



COVEWAY RACEWAY RED TEE

White



CW150-RT-W

Cordway®



CORDWAY PVC RACEWAY

2.5" W X 14/32" H X 5' L
Almond, Brown, Gray

CDW1200-5A

CDW1200-5BR

CDW1200-5GR

